



# **Proposed Comprehensive Development at Wo Shang Wai, Yuen Long**

Biannual EM&A Summary Report on Ecology for  
November 2017 – April 2018 (Rev A)

June 2018

Heng Shung Construction Co. Ltd.



20/F AIA Kowloon Tower  
Landmark East  
100 How Ming Street  
Kwun Tong  
Kowloon  
Hong Kong

T +852 2828 5757  
F +852 2827 1823  
mottmac.hk

29/F AIA Tower  
183 Electric Road  
North Point, Hong Kong

# **Proposed Comprehensive Development at Wo Shang Wai, Yuen Long**

Biannual EM&A Summary Report on Ecology for  
November 2017 – April 2018 (Rev A)

June 2018



**Pursuant to Condition 4.6 of Environmental Permit No. EP-311/2008/E, this Biannual EM&A Report on ecological aspects for November 2017 to April 2018 has been reviewed, certified by Environmental Team Leader (ETL) and verified by the Independent Environmental Checker (IEC).**

**Certified by:**



---

Brandon Wong  
Environmental Team Leader (ETL)  
Mott MacDonald Hong Kong Ltd.

**Date**

25 July 2018

**Verified by:**



---

David Yeung  
Independent Environmental Checker (IEC)  
Ramboll Environ Hong Kong Limited

**Date**

25 July 2018



# Contents

<b>1</b>	<b>Introduction</b>	<b>1</b>
1.1	Background	1
1.2	Survey Area	1
1.3	EM&A Requirement on Ecological Impact	2
<b>2</b>	<b>Ecological Monitoring</b>	<b>3</b>
2.1	Ecological Monitoring	3
2.2	Monitoring of Birds	3
2.3	Monitoring of Herpetofauna	4
2.4	Monitoring of Dragonfly and Butterflies	4
2.5	Monitoring of Mammals	4
2.6	Monitoring of Water Quality	5
<b>3</b>	<b>Ecological Issues</b>	<b>6</b>
3.1	Vegetation Management	6
3.2	Wildlife Management	6
<b>4</b>	<b>Summary of Wetland Restoration Area Performance</b>	<b>7</b>
4.1	Summary of Findings	7
4.2	WRA Performance for the Bird Target Species	8
4.3	Conclusions	11
<b>5</b>	<b>References</b>	<b>12</b>
5.1	List of References	12

## Tables

Table 1.1:	Summary of Ecological Impact EM&A Requirements	2
Table 4.1:	Summary of Ecological Monitoring in WRA and Survey Area	7
Table 4.2:	Biannual mean & Annual mean of the three target species of the WRA from November 2016 to April 2018	8
Table 4.3:	Mean number of bird species of conservation importance and/or wetland-dependence in the WRA during reporting period	9

## Figures

Figure 1.1 General Site Layout and Locations of Monitoring Stations

Figure 1.2 Survey Area and Transect Walked

## Appendices

Appendix A Schedule of Ecological Monitoring

Appendix B Summary of Bird Surveys

Appendix C Summary of Herpetofauna Monitoring, Mammals and Insect Surveys

Appendix D Summary of Water Quality Monitoring



# 1 Introduction

## 1.1 Background

In March 2005, the Project Proponent, Profit Point Enterprises Limited, acquired the development site in Yuen Long at Wo Shang Wai. An Environmental Impact Assessment (EIA) was then carried out under the EIA Ordinance (EIAO), and the Environmental Permit (EP-311/2008) for construction of the comprehensive development in Wo Shang Wai was first granted by EPD on 9 September 2008 and has been subsequently varied, with the current version (EP-311/2008/E) issued by EPD on 19 December 2017.

The Project involves the residential development and associated infrastructure and wetland restoration area and linear landscape area. The construction works under the Environmental Permit commenced on 12 May 2010. The site formation construction works of the Wetland Restoration Area (hereafter WRA) were completed on 15 November 2010, and the WRA was established by October 2012, within 30 months from the commencement of construction as stipulated in the EP. This indicated that planting works as scheduled in the approved Wetland Restoration and Creation Scheme (WRCS; November 2009) was completed, except along the western and southern boundary where the planting is affected by the existing site boundary and noise barrier, and for which a Variation to Environmental Permit (EP-311/2008/C) to defer planting at the location was approved. The current valid EP (EP-311/2008/E) includes specific mitigation measures to minimise certain identified noise impacts during the operation phase of the Project.

Mott MacDonald Hong Kong Ltd. ("MMHK") has been commissioned by the Contractor, Heng Shung Construction Co. Ltd., to undertake the Environmental Team (ET) services to carry out environmental monitoring and audit (EM&A) for both pre-construction and construction phases of the Proposed Comprehensive Development at Wo Shang Wai, Yuen Long. From August 2016, the Project Proponent, Profit Point Enterprises Limited, commissioned MMHK to continue the ET services.

According to the EP Condition 4.6, the EM&A results on ecological aspects during the construction phase should be reported to the EIA Subcommittee of the Advisory Council on the Environment (ACE), EPD and Agriculture, Fisheries and Conservation Department (AFCD) on a biannual basis. This is the 16<sup>th</sup> Biannual EM&A report and it summarises the findings on EM&A results of ecological aspects during the period from 1 November 2017 to 30 April 2018. This report documents surveys and management activities conducted in the Survey Area and WRA from 1 November 2017 to 30 April 2018, which is based on ecological surveys and advices on management which were undertaken by the appointed Non-Government Organisations (Green Power / Eco-Education & Resources Centre) during the reporting period.

## 1.2 Survey Area

Surveys were conducted within 500m of the Project area. The WRA was surveyed since early September 2010. The survey area and transect are provided in **Figure 1.1**.

### 1.3 EM&A Requirement on Ecological Impact

The EM&A programme requires environmental monitoring of ecology as specified in the approved EM&A Manual. A summary of ecological impact EM&A requirements is presented in **Table 1.1**:

**Table 1.1: Summary of Ecological Impact EM&A Requirements**

Descriptions	Locations	Frequencies
Birds	Within the Project Area and Assessment Area of 500m	Weekly
Dragonflies and Butterflies	Within the Project Area and Assessment Area of 500m	Once per month during Mar and Sep to Nov, and twice per month during Apr to Aug
Herpetofauna	Within the Project Area and Assessment Area of 500m	Day-time: Once per month during Apr to Nov Night-time: Once per month during Mar to Aug
Water quality of Wetland Restoration Area (WRA)	WRA	After filling of WRA with water, monthly for in situ water quality and every six months (end of wet season and end of dry season) for laboratory testing
Site Inspections	Within the Project Area and Assessment Area of 500m	Weekly

## 2 Ecological Monitoring

### 2.1 Ecological Monitoring

In accordance with the EM&A requirements, monitoring of birds, dragonflies and butterflies, and herpetofauna were carried out during the reporting period. In addition, monitoring of mammals was also conducted concurrently with other surveys and the results were reported although it is not required by the EM&A Manual. The dates of surveys are summarised in **Appendix A**.

### 2.2 Monitoring of Birds

Monitoring was undertaken following the survey methodology in the EM&A Manual (Table 7-1). Since September 2010, monitoring included the newly formed cells to monitor faunal usage of this area. All bird species of conservation importance and/or wetland dependent were identified and enumerated. Flying birds were not recorded unless they were foraging and/or associated with the habitat (such as swifts). Further, notable bird observations during other surveys were also recorded.

Bird surveys were conducted on a weekly basis throughout the period. A total of 57 bird species were recorded in the Survey Area (excluding the WRA) in the survey period (i.e. November 2017 to April 2018), 32 of which were species of conservation importance and/or wetland-dependence. A summary of survey data is provided in **Appendix B**.

A total of 66 species were recorded in the WRA in the survey period, 35 of which were species of conservation importance and/or wetland-dependent species. All three target species<sup>1</sup> (i.e. Little Egret, *Egretta garzetta*, Chinese Pond Heron, *Ardeola bacchus* and Eastern Cattle Egret, *Bubulcus coromandus*) were recorded in the WRA during regular survey. The WRA continues to attract a number of species of conservation importance, including Little Grebe, *Tachybaptus ruficollis*, Great Cormorant, *Phalacrocorax carbo*, Grey Heron, *Ardea cinerea*, Great Egret, *Ardea alba*, Intermediate Egret, *Egretta intermedia*, Yellow Bittern, *Ixobrychus sinensis*, Black-crowned Night Heron, *Nycticorax nycticorax*, Black Kite, *Milvus migrans*, Crested Serpent Eagle, *Spilornis cheela*, Greater Spotted Eagle, *Clanga clanga*, Eurasian Hobby, *Falco subbuteo*, Black-winged Stilt, *Himantopus himantopus*, Oriental Pratincole, *Glareola maldivarum*, Little Ringed Plover, *Charadrius dubius*, Common Greenshank, *Tringa nebularia*, Wood Sandpiper, *Tringa glareola*, Pied Kingfisher, *Ceryle rudis*, White-throated Kingfisher, *Halcyon smyrnensis*, Bluethroat, *Luscinia svecica*, Red-billed Starling, *Spodiopsar sericeus*, White-shouldered Starling, *Sturnia sinensis* and Collared Crow, *Corvus torquatus*. Little Grebe, Black-crowned Night Heron, Yellow Bittern, Crested Serpent Eagle, Eurasian Hobby, Oriental Pratincole, Little Ringed Plover, Wood Sandpiper, Pied Kingfisher, White-throated Kingfisher, White-shouldered Starling, Bluethroat and Collared Crow are listed by Fellowes *et al.* as of “Local Concern” in 2002. Great Cormorant, Grey Heron and Great Egret are listed by Fellowes *et al.* “Potential Regional Concern” in 2002. Intermediate Egret, Black Kite, Black-winged Stilt and Common Greenshank are listed by Fellowes *et al.* as of “Regional Concern” in 2002. Greater Spotted Eagle is listed by Fellowes *et al.* as of “Global Concern” in 2002, and Collared Crow is also listed as “Near Threatened” species on the International Union for Conservation of

<sup>1</sup> The target species are: Little Egret, *Egretta garzetta*, Eastern Cattle Egret, *Bubulcus coromandus* (formerly known as Cattle Egret, *Bubulcus ibis*) and Chinese Pond Heron, *Ardeola bacchus*.

Nature (IUCN) red list. Red-billed Starling is listed as Regional Concern (Wetland Restoration Plan, Mott, 2008).

In addition to wetland dependent birds, the WRA also attracts a number of terrestrial birds including Greater Coucal, *Centropus sinensis* which are listed as vulnerable (VU) in the China Red Data Book and it is protected under terrestrial wildlife state protection (category II). Survey findings indicate that the WRA not only provides important habitat for wetland-dependence birds but also the terrestrial birds.

The fish ponds to the north of the WRA are at a greater distance from the residential portion and any disturbance impact(s) from the construction works would have first affected the WRA. Further, 35 bird species of conservation importance and /or wetland dependence, were observed using the site during survey period, including some bird species which are highly sensitive to disturbance and three target species (i.e. Little Egret, Eastern Cattle Egret and Chinese Pond Heron). Thus, the WRA is considered to be effective both in acting as a buffer against potential disturbance impacts from the construction site, and in providing suitable wetland habitats at the fringe of the Deep Bay system.

### 2.3 Monitoring of Herpetofauna

Monitoring was undertaken following the survey methodology in the EM&A Manual. Day-time herpetofauna surveys were conducted once in November 2017 and April 2018. Night-time herpetofauna surveys were conducted once a month between March 2018 and April 2018. No herpetofauna surveys were scheduled between December 2017 and February 2018. Further, notable herpetofauna observations during other surveys were also recorded.

No Amphibian nor reptile species were recorded in the survey area (excluding the WRA) within the survey period.

Brown Tree Frog, *Polypedates megacephalus*, was recorded in the WRA within the survey period. Checkered Keelback, *Xenochrophis flavipunctatus*, and one unidentified snake species were recorded in the WRA within the survey period. A summary of survey data is provided in **Appendix C**.

### 2.4 Monitoring of Dragonfly and Butterflies

Monitoring of dragonflies and butterflies was conducted once per month in November 2017 and March 2018, and twice per month in April 2018. No odonates and butterflies surveys were scheduled between December 2017 and February 2018. Further, notable dragonfly and butterfly observations during other surveys were recorded.

A total of 2 dragonfly species and 2 butterfly species were recorded using the ponds in the Survey Area (excluding WRA) in the reporting period. At the WRA, a higher diversity of dragonfly species (6 species) and butterfly species (4 species) were recorded. A summary of the survey findings is provided in **Appendix C**.

### 2.5 Monitoring of Mammals

Monitoring of mammals was conducted concurrently with other surveys. No mammal species was recorded in the Survey Area (excluding WRA) within the reporting period.

Two unidentified bat species and Leopard Cat, *Prionailurus bengalensis* were recorded in the WRA during the reporting period. A summary of the survey findings is provided in **Appendix C**.

## 2.6 Monitoring of Water Quality

Monthly water quality monitoring continued during the reporting period. Monitoring parameters followed that in the EM&A Manual. In November 2017, the pH of Cell 1, Cell 2 and Cell 3 reached action level; In December 2017, the water level of Cell 2 reached the action level; In January 2018 the water level of Cell 2 reached the action level; In February 2018, the water level of Cell1, Cell 2 and Cell 4 reached the action level; In March 2018, the water level of Cell1, Cell 2, Cell 3 and Cell 4 reached the action level; In April 2018, the water level of Cell1, Cell 2, Cell 3 and Cell 4 reached the action level.

According to the ecological monitoring data, the low water level in the WRA attracted wetland-dependent species including Little Grebe, Grey Heron, Great Egret, Intermediate Egret, Yellow Bittern, Black-crowned Night Heron, Black Kite, Crested Serpent Eagle, Greater Spotted Eagle, Eurasian Hobby, Black-winged Stilt, Oriental Pratincole, Little Ringed Plover, Common Greenshank, Wood Sandpiper, Pied Kingfisher, White-throated Kingfisher, Bluethroat, Red-billed Starling, White-shouldered Starling, and Collared Crow. As the low water level attracts wetland-dependent birds, the existing water level will be maintained. Monitoring data is presented in **Appendix D**. Locations for the monitoring of water quality for the ecological monitoring are shown in **Figure 1.2**.

## 3 Ecological Issues

### 3.1 Vegetation Management

Removal of exotic vegetation in all cells was undertaken; these included but not limited to *Ipomoea* sp., *Mikania* sp., *Mimosa* sp., *Pennisetum* sp. and *Typha* sp..

Vegetation management activities undertaken at the site primarily involved watering of plants, weeding, tree pruning and grass cutting.

### 3.2 Wildlife Management

Golden Apple Snails were removed on an “as-seen” basis.

All red fire ant nests were treated with approved pesticide and covered with overturn baskets for a week. All pesticide used was in powder form and the pesticide usage was confined to Fire Ants’ nest found on terrestrial area which were further away from the Cells to prevent the contamination of water. All treated fire ant nests were inactive within one week of treatment.

Preliminary actions have been taken to increase the WRA utilization by birds. The mitigation actions are:

1. Lowering the water level of Cell 1, Cell 2, Cell 3 and Cell 4;
2. Controlling the vegetation at Cell 1, Cell 2, Cell 3 and Cell 4.

These mitigation actions aim to increase the foraging area and maintain suitable habitat for target species.

## 4 Summary of Wetland Restoration Area Performance

### 4.1 Summary of Findings

Ecological monitoring between 1 November 2017 and 30 April 2018 was carried out following the survey methodology and frequency outlined in the EM&A Manual.

Summary of ecological monitoring in the Survey Area and WRA between November 2017 and April 2018 (**Table 4.1**):

**Table 4.1: Summary of Ecological Monitoring in WRA and Survey Area**

Species	Number of species recorded in Survey Area (excluding WRA)	Number of species recorded in WRA
Birds (total)	57	66
Birds (of conservation importance and/or wetland-dependence)	32	35
Amphibians	0	1
Reptiles	0	2
Mammals	0	3
Dragonflies	2	6
Butterflies	2	4

A total of 66 bird species, 1 amphibian species, 2 reptile species, 3 mammal species, 6 dragonfly species and 4 butterfly species were recorded in the WRA, including 35 bird species of conservation importance and/or wetland-dependence, while all dragonfly species are wetland-dependent. These findings indicate that the WRA is supporting wetland-dependent birds and other species of conservation importance.

Survey findings indicate that the WRA is attracting the three target species to varying degrees. During the survey period (i.e. November 2017 to April 2018), the site was particularly attractive to Little Egret. Little Egret was recorded on nearly weekly basis, with monthly means ranging from 2.8 to 62.3 birds per survey; while Chinese Pond Heron was also recorded on nearly weekly basis in regular survey period (i.e. November 2017 to April 2018) with monthly means ranging from 0.3 to 7.0 bird per survey. Eastern Cattle Egret was least attracted to the site. Eastern Cattle Egret was recorded in January 2018 with monthly mean of 0.4 during the recorded month. A list of the bird species recorded at the WRA since completion of site formation is provided in **Appendix B (Table B4 to B7)**.

With the completion of planting as scheduled in the approved Habitat Creation and Management Plan (HCMP) in August 2012, establishment work at the WRA is considered complete (except along the western and southern boundary where the planting is affected by the existing site boundary and noise barrier, and for which an approved Variation to Environmental Permit (EP-311/2008/D) to defer planting at the location applies), and the 30-month establishment period concluded in October 2012. A review of the performance of the WRA during the review period in terms of target species attraction is provided in Section 4.2 below.

It should be noted that the high planting density was intended to ensure a rapid establishment of the site prior to occupation intake, and not intended to be maintained as a long-term tree density at the WRA. It is a standard arboricultural practice to apply appropriate horticultural/ arboricultural maintenance methods in the subsequent five or six years after initial planting to remove less desired specimens to facilitate the successful growth of those which are of higher landscape and/or ecological value. Further, some fine tuning of planting locations and tree/shrub mix is required in order to fulfil the design intent of the habitat structure at WRA after reviewing the site configuration following site formation. Vegetation management hereafter should largely consist of maintenance of planted trees and shrubs for the creation of suitable habitats for target species and long-term habitat structure of the site.

## 4.2 WRA Performance for the Bird Target Species

The provision, maintenance and operation of a WRA are a requirement under the Environmental Permit for compensation for predicted ecological impacts to species of conservation importance. Three bird target species were identified during the EIA process; they are Little Egret, Eastern Cattle Egret and Chinese Pond Heron. Target levels of these species are the annual mean number recorded during the Baseline Ecological Monitoring (i.e. a mean of 5.5 Little Egret, 1.3 Eastern Cattle Egret and 1.3 Chinese Pond Heron over a 12-month period) thus, the ecological impact of the project to the species concerned is considered to have been fully compensated when the target level for each of the three species is achieved. Whilst further discussion and agreement regarding the target level is yet to be undertaken with the relevant Government departments prior to the operation of the WRA, the proposed level offers a clear reference to the effectiveness of the mitigation measures. According to the approved Wetland Creation and Restoration Scheme (November 2009, hereafter WCRS), the WRA is anticipated to be fully operational after an establishment period of 2.5 years (30 months).

Of the three target species, all of them (i.e. Little Egret, Chinese Pond Heron and Eastern Cattle Egret) were recorded using the site under survey period (November 2017 – April 2018). Among all target species, Little Egret and Chinese Pond Heron were recorded in all six months and Eastern Cattle Egret was recorded in January 2018 during the six-month survey period.

**Table 4.2: Biannual mean & Annual mean of the three target species of the WRA from November 2016 to April 2018**

Common Name	Scientific Name	Conservation Status (2)	Baseline Annual Mean (3)	Biannual Mean			Annual Mean		
				Nov 16 - Apr 17	May 17 - Oct 17	Nov 17 - Apr 18	May 16 - Apr 17	May 17 - Apr 18	Apr 17 - Apr 18
Chinese Pond Heron	<i>Ardeola bacchus</i>	PRC, (RC)	1.3	<b>4.6</b>	<b>2.4</b>	<b>2.4</b>	<b>4.2</b>	<b>2.4</b>	
Little Egret	<i>Egretta garzetta</i>	PRC, (RC)	5.5	<b>5.9</b>	<b>6.6</b>	<b>15.7</b>	4.7	<b>11.2</b>	
Eastern Cattle Egret	<i>Bubulcus coromandus</i>	(LC)	1.3	0.0	0.0	<0.1	<0.1	<0.1	

Notes:

- (1) Value in **bold** indicated the Target Level was achieved.
- (2) Conservation Status follows that of Fellow *et. al.* (2002). See Appendix B (Table B3).
- (3) Annual mean number recorded during Baseline Ecological Monitoring.

Based on **Table 4.2** above, the target level of the Chinese Pond Heron and Little Egret have been achieved between November 2017 to April 2018 while the target levels for Eastern Cattle Egret was not achieved.



As the Proposed Comprehensive Development at Wo Shang Wai is still under construction phase, it is considered acceptable for the target species levels have not been achieved. According to the ecological monitoring data of the survey area (excluding the WRA), Eastern Cattle Egret was observed only in 5 of the regular ecological survey (i.e. 5 out of 25) and the annual mean of the Eastern Cattle Egret of survey area (excluding the WRA) is 3.1 bird per survey (November 2017 – April 2018), the results indicated that the number of Eastern Cattle Egret in the whole area is low and the low number of Eastern Cattle Egret in the WRA is considered acceptable. However, should this situation continue, a review of the management of the WRA and adaptive management steps will be required.

The mitigation actions including: 1) Lowering the water level; and 2) Controlling the vegetation; have been taken in the WRA since November 2014 to increase the WRA utilization by birds, especially for the three target species of the WRA. Since the implementation of the mitigation actions, the annual means of Chinese Pond Heron and Little Egret, two of the three target species reached the target level and the annual means of Little Egret, increased gradually from 4.7 to 11.2 for respectively (**Table 4.2**). This may indicate the mitigation actions taken in the WRA are effective. The mitigation actions will be continued in the WRA and monitoring will be continued to investigate the effectiveness of the mitigation actions.

In addition, though the target levels for Eastern Cattle Egret have not been achieved between November 2017 to April 2018, the WRA continues to attract wetland dependent species. Among all the wetland dependent species, Little Grebe, Black-crowned Night Heron, Yellow Bittern, Crested Serpent Eagle, Eurasian Hobby, Oriental Pratincole, Little Ringed Plover, Wood Sandpiper, Pied Kingfisher, White-throated Kingfisher, White-shouldered Starling, Bluethroat and Collared Crow are listed by Fellowes et al. as of “Local Concern” in 2002. Great Cormorant, Grey Heron and Great Egret are listed by Fellowes et al. “Potential Regional Concern” in 2002. Intermediate Egret, Black Kite, Black-winged Stilt and Common Greenshank are listed by Fellowes et al. as of “Regional Concern” in 2002. Greater Spotted Eagle is listed by Fellowes et al. as of “Global Concern” in 2002, and Collared Crow is also listed as “Near Threatened” species on the International Union for Conservation of Nature (IUCN) red list. Red-billed Starling is listed as Regional Concern (Wetland Restoration Plan, Mott, 2008).

A summary of the annual mean of bird species of conservation importance and/or wetland-dependence recorded in the WRA from November 2017 to April 2018 is shown in **Table 4.3**.

The increase of the number of the species of conservation interest indicates the WRA is providing suitable habitat for them.

**Table 4.3: Mean number of bird species of conservation importance and/or wetland-dependence in the WRA during reporting period**

Common Name	Scientific Name (3)	Wetland Dependence	Conservation Status (1)	Annual mean number recorded during the Baseline Ecological Monitoring	Mean number recorded between Nov 2017 - Apr 2018 (2)
Little Grebe	Tachybaptus ruficollis	Y	LC	0.0	1.8
Great Cormorant	Phalacrocorax carbo	Y	PRC	0.5	0.2
Grey Heron	Ardea cinerea	Y	PRC	0.1	1.3
Great Egret	Ardea alba	Y	PRC, (RC)	V	1.2
Intermediate Egret	Egretta intermedia	Y	RC	0.0	V
Little Egret	Egretta garzetta	Y	PRC, (RC)	5.5	15.7

Common Name	Scientific Name (3)	Wetland Dependence	Conservation Status (1)	Annual mean number recorded during the Baseline Ecological Monitoring	Mean number recorded between Nov 2017 - Apr 2018 (2)
Eastern Cattle Egret	Bubulcus coromandus	Y	(LC)	1.3	0.1
Chinese Pond Heron	Ardeola bacchus	Y	PRC, (RC)	1.3	2.4
Yellow Bittern	Ixobrychus sinensis	Y	(LC)	0.0	0.2
Black-crowned Night Heron	Nycticorax nycticorax	Y	(LC)	0.2	0.1
Black Kite	Milvus migrans	Y	(RC)	1.2	0.6
Crested Serpent Eagle	Spilornis cheela	N	(LC)	0.0	0.1
Greater Spotted Eagle	Clanga clanga	Y	GC	0.0	V
Eastern Imperial Eagle	Aquila heliaca	Y	-	0.0	V
Eastern Buzzard	Buteo japonicus	Y	-	0.0	V
Eurasian Hobby	Falco subbuteo	Y	(LC)	0.0	V
White-breasted Waterhen	Amaurornis phoenicurus	Y	-	0.2	0.2
Common Moorhen	Gallinula chloropus	Y	-	0.0	0.1
Black-winged Stilt	Himantopus himantopus	Y	RC	0.0	0.1
Oriental Pratincole	Glareola maldivarum	Y	LC	V	V
Little Ringed Plover	Charadrius dubius	Y	(LC)	0.1	0.1
Common Greenshank	Tringa nebularia	Y	RC	0.0	V
Green Sandpiper	Tringa ochropus	Y	-	0.0	0.6
Wood Sandpiper	Tringa glareola	Y	LC	0.0	0.1
Common Sandpiper	Actitis hypoleucos	Y	-	0.2	0.9
Pied Kingfisher	Ceryle rudis	Y	(LC)	0.0	0.1
White-throated Kingfisher	Halcyon smyrnensis	Y	(LC)	0.0	0.2
Common Kingfisher	Alcedo atthis	Y	-	0.0	0.7
Eastern Yellow Wagtail	Motacilla tschutschensis	Y	-	10.0	0.3
White Wagtail	Motacilla alba	Y	-	2.2	1.9
Richard's Pipit	Anthus richardi	Y	-	0.0	0.1
Bluethroat	Luscinia svecica	N	LC	0.0	V
Red-billed Starling	Spodiopsar sericeus	Y	(RC)*	0.9	2.4
White-shouldered Starling	Sturnia sinensis	Y	(LC)	0.1	V
Collared Crow	Corvus torquatus	Y	LC, NT	0.0	0.3
Oriental Reed Warbler	Acrocephalus orientalis	Y	-	0.1	0.0
Common Snipe	Gallinago gallinago	Y	-	0.1	0.0
Pacific Swift	Apus pacificus	N	(LC)	V	0.0
Grey Wagtail	Motacilla cinerea	Y	-	2.2	0.0
Zitting Cisticola	Cisticola juncidis	Y	LC	0.1	0.0

## Notes:

(1) Conservation status follows that of Fellowes *et al.* (2002) and BirdLife International listing (2017). Letters in parentheses indicate that the assessment is on the basis of restrictedness in breeding and/or roosting sites rather than in general occurrence. (Fellowes *et al.* 2002)

(2) Refers to the mean number of individuals recorded between Nov 2017 – Apr 2018 in the WRA

(3) Follows HK bird list (dated 2017-09-05)

V indicates the species is recorded outside regular surveys

- indicates the species is not recorded during the survey

\* Red-billed Starling is considered by Fellowes *et al.* (2002) to be of Global Concern. Since publication, however, the global population estimate has been revised and the species is not now considered globally threatened. A listing of Regional Concern (RC) based on the importance of the large roosts present near Deep Bay, is considered to be more appropriate. (Wetland Restoration Plan, Mott, 2008). Red-billed Starling is now listed as Least Concern by IUCN. (IUCN, 2016)

### 4.3 Conclusions

A total of 133 bird species have been recorded within the WRA since completion of site formation. Of the 133 species, 85 were species of conservation importance and/or wetland dependence – indicating that the WRA provides suitable habitats for these species despite the construction work within the residential portion of the Project Site.

The site is also considered achieving the no net loss of wetland in terms of area and function because it continuously attracts bird species of conservation importance, indicating that the WRA not only provides a buffer for potential disturbance during construction phase, but also a valuable habitat for wetland dependent species and species of conservation importance.

## 5 References

### 5.1 List of References

BirdLife International. 2017. Important Bird Areas factsheet: Inner Deep Bay and Shenzhen River catchment area. <http://www.birdlife.org> on 06/07/2017

Chan, S. K.F., K.S. Cheung, C.Y. Ho, F.N Lam & W.S. Tam, 2005. *A Field Guide to the Amphibians of Hong Kong*. Cosmos Books Ltd., Hong Kong.

Fellowes *et al.*, 2002. Wild Animals to Watch: Terrestrial and Freshwater Fauna of Conservation Concern in Hong Kong.

Hong Kong Bird Watching Society 2016. List of Hong Kong Birds - 2017-01-26. <[www.hkbws.org.hk](http://www.hkbws.org.hk)>.

Horiuchi, S., Odawara, T., Yonemura, S., Hayashi, Y., Kawaguchi, M., Asada, M., Kato, M. & Yasuhara, K. (2007, November). Floating structure using waste tires for water environmental remediation. In Scrap Tire Derived Geomaterials-Opportunities and Challenges: Proceedings of the International Workshop IW-TDGM 2007. p. 291. CRC Press.

Karsen, S., M.W.N. Lau & A. Bogadek, 1998. *Hong Kong Amphibians and Reptiles*. Provisional Urban Council, Hong Kong.

IUCN 2016. IUCN Red List of Threatened Species. Version 2016-3. <[www.iucnredlist.org](http://www.iucnredlist.org)>. Downloaded on **7th December 2016**

Lo, P. Y. F. and W.L. Hui, 2004. *Hong Kong Butterflies*. Hong Kong, Cosmos Books Ltd.

Mott, 2008. *WSW Environmental Monitoring and Audit Manual (March 2008)*.

Mott, 2008. *WSW Environmental Impact Assessment Report Volumes 1 to 3 (March 2008)*.

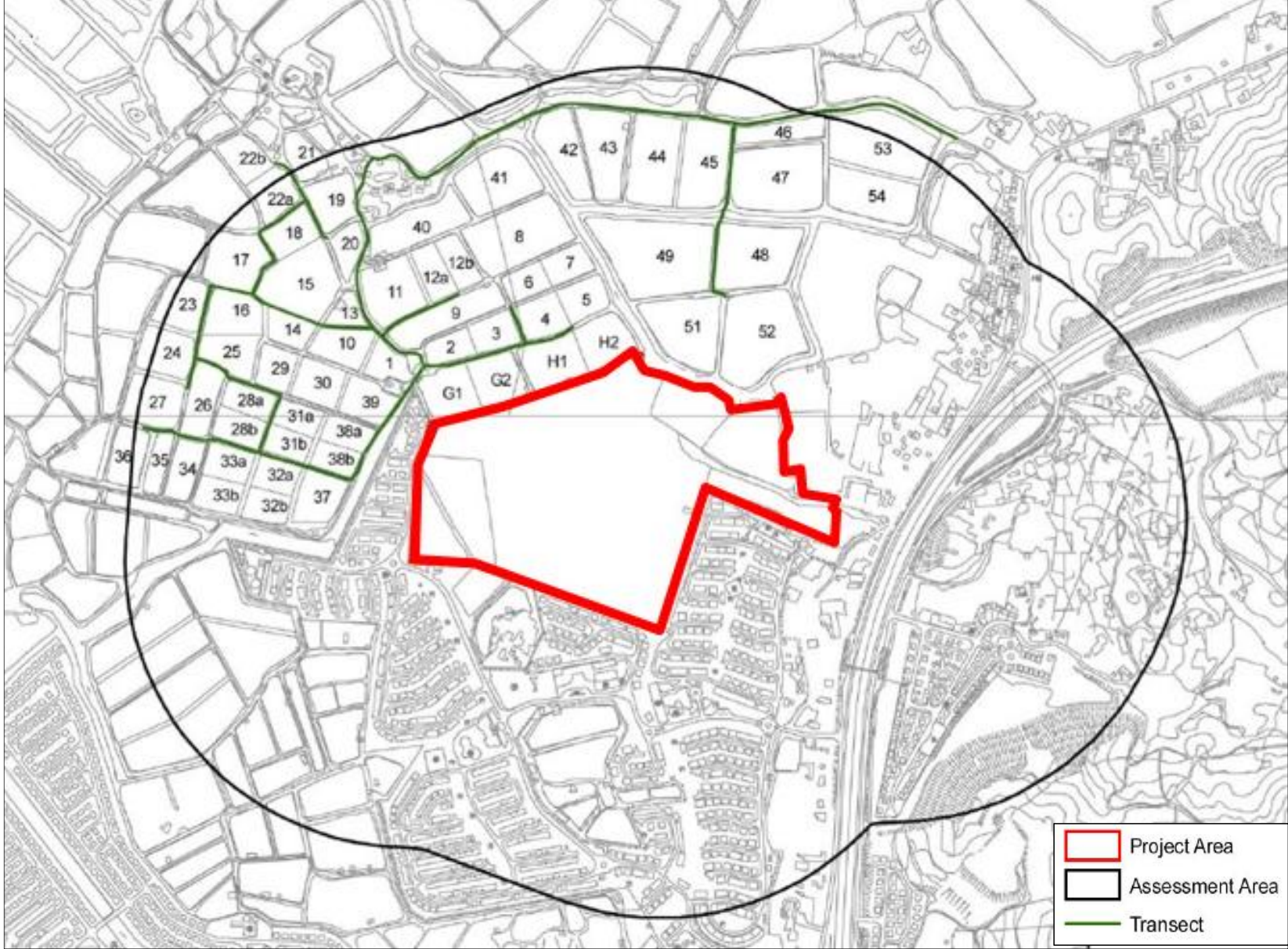
Mott, 2008. *WSW Wetland Restoration Plan (March 2008)*.

Shek, C. T. 2006. *A Field Guide to the Terrestrial Mammals of Hong Kong*. Friends of the Country Parks Cosmos Books Ltd., Hong Kong.

Tam, T. W., K.K. Leung, B.S.P. Kwan, K.K.Y. Wu, S.S.H. Tang, I.W.Y. So, J.C.Y. Cheng, E.F.M. Yuen, Y.M. Tsang, and W.L. Hui, 2011. *The Dragonflies of Hong Kong (1st edition)*. Agriculture, Fisheries and Conservation Department. Friends of Country Parks and Cosmos Books Ltd., Hong Kong.

Wilson, K.D.P., Tam, T.W., Kwan, B.S.P., Wu, K.K.Y., Wong, B.S.F., Wong J.K. 2004. Field Guide to the Dragonflies of Hong Kong. AFCD, Friends of Country Park and Cosmos Books Ltd. Hong Kong.

Young, J.J. & Yiu, V., 2002. *Butterfly Watching In Hong Kong*. Wan Li Book Co. Ltd., Hong Kong.



Notes

Key to symbols

Project Area  
Assessment Area  
Transect

Reference drawings

Rev	Date	Drawn	Description	Ch'Y'd	App'd
M			20/F AJA Kowloon Tower Landmark East 100 How Ming Street Kwun Tong, Kowloon Hong Kong T: +852 2829 5757 F: +852 2027 1623 W: motmac.com		
M					

Client

PROFIT POINT ENTERPRISES LIMITED

Project

PROPOSED COMPREHENSIVE DEVELOPMENT  
AT WO SHANG WAI, YUEN LONG

Title

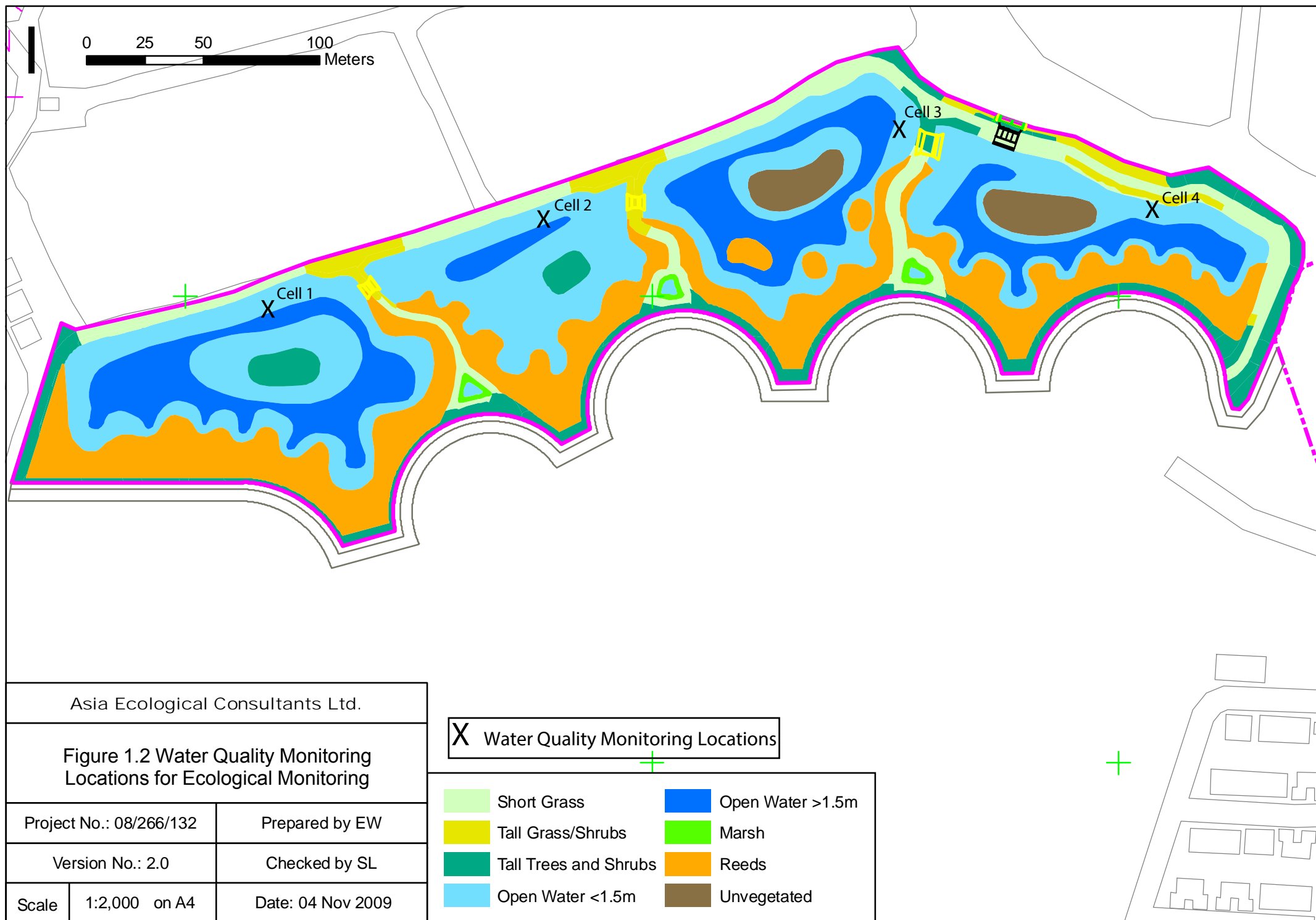
Survey Area and Transect  
Walked

Designed		Eng check	
Drawn		Coordination	
Dwg check		Approved	
Scale at A1	Status	Rev	

Drawing Number

Figure 1.1





# Appendix A. Schedule of Ecological Monitoring

Nov 2017	1	2	3	4	5	6	7	8	9	10	11	12	13	14	15	16	17	18	19	20	21	22	23	24	25	26	27	28	29	30	
Mammals			✓				✓			✓				✓			✓				✓	✓		✓				✓			
Birds			✓				✓			✓				✓			✓				✓			✓				✓			
Herpetofauna																						✓									
Dragonflies & butterflies																						✓									
Water Quality															✓														✓#		
Inspection Visits			✓				✓			✓				✓			✓				✓	✓		✓				✓			
Dec 2017	1	2	3	4	5	6	7	8	9	10	11	12	13	14	15	16	17	18	19	20	21	22	23	24	25	26	27	28	29	30	31
Mammals	✓				✓			✓				✓			✓				✓			✓			✓			✓			
Birds	✓				✓			✓				✓			✓				✓			✓			✓			✓			
Herpetofauna																															
Dragonflies & butterflies																															
Water Quality																						✓					✓#				
Inspection Visits	✓				✓			✓				✓			✓				✓			✓			✓			✓			
Jan 2018	1	2	3	4	5	6	7	8	9	10	11	12	13	14	15	16	17	18	19	20	21	22	23	24	25	26	27	28	29	30	31
Mammals		✓			✓				✓			✓				✓	✓		✓				✓		✓				✓		
Birds		✓			✓				✓			✓				✓			✓				✓		✓				✓		
Herpetofauna																															
Dragonflies & butterflies																															
Water Quality																#													✓		
Inspection Visits		✓			✓				✓			✓				✓			✓				✓		✓				✓		

Feb 2018	1	2	3	4	5	6	7	8	9	10	11	12	13	14	15	16	17	18	19	20	21	22	23	24	25	26	27	28			
Mammals		✓				✓			✓				✓							✓			✓				✓				
Birds		✓				✓			✓				✓							✓			✓				✓				
Herpetofauna																															
Dragonflies & butterflies																															
Water Quality													#											✓							
Inspection Visits		✓				✓			✓				✓							✓			✓				✓				
Mar 2018	1	2	3	4	5	6	7	8	9	10	11	12	13	14	15	16	17	18	19	20	21	22	23	24	25	26	27	28	29	30	31
Mammals		✓				✓			✓				✓							✓			✓				✓				
Birds		✓				✓			✓				✓							✓			✓				✓				
Herpetofauna															✓																
Dragonflies & butterflies															✓																
Water Quality																✓#					✓										
Inspection Visits		✓				✓			✓				✓							✓	✓		✓				✓				
Apr 2018	1	2	3	4	5	6	7	8	9	10	11	12	13	14	15	16	17	18	19	20	21	22	23	24	25	26	27	28	29	30	
Mammals			✓			✓				✓			✓				✓			✓					✓		✓				
Birds			✓			✓				✓			✓				✓			✓					✓		✓				
Herpetofauna									✓d											✓n											
Dragonflies & butterflies							✓																			✓					
Water Quality																							✓				#				
Inspection Visits			✓			✓				✓			✓				✓			✓					✓		✓				

Notes: Light grey cells indicate public holidays, Saturdays or Sundays.  
 # Additional pH and /or water level monitoring.  
 "d" and "n" indicate day-time and night-time herpetofauna surveys respectively.



## Appendix B. Summary of Bird Surveys

**Table B1: Summary of bird monitoring (for species of conservation importance and/or wetland-dependence) within the Survey Area (excluding the WRA)**

Common Name	Scientific Name (3)	Wetland Dependent	Conservation Status (1)	Nov 2017 Mean (2)	Dec 2017 Mean (2)	Jan 2018 Mean (2)	Feb 2018 Mean (2)	Mar 2018 Mean (2)	Apr 2018 Mean (2)
Little Grebe	<i>Tachybaptus ruficollis</i>	Y	LC	5.5	4.3	5.2	3.0	2.5	7.0
Great Cormorant	<i>Phalacrocorax carbo</i>	Y	PRC	21.3	5.3	17.4	19.8	7.3	0.0
Grey Heron	<i>Ardea cinerea</i>	Y	PRC	8.0	3.0	3.6	2.0	0.3	0.5
Great Egret	<i>Ardea alba</i>	Y	PRC, (RC)	15.0	4.0	1.0	4.2	1.3	0.8
Intermediate Egret	<i>Egretta intermedia</i>	Y	RC	0.0	0.0	0.0	0.0	0.0	V
Little Egret	<i>Egretta garzetta</i>	Y	PRC, (RC)	11.0	24.3	3.2	15.0	8.0	13.8
Eastern Cattle Egret	<i>Bubulcus coromandus</i>	Y	(LC)	4.0	0.0	0.0	0.0	1.3	1.8
Chinese Pond Heron	<i>Ardeola bacchus</i>	Y	PRC, (RC)	10.3	5.3	2.8	2.8	3.5	3.8
Yellow Bittern	<i>Ixobrychus sinensis</i>	Y	(LC)	0.0	0.0	0.0	0.0	0.0	0.3
Black-crowned Night Heron	<i>Nycticorax nycticorax</i>	Y	(LC)	0.0	0.0	0.0	0.0	0.0	V
Black-faced Spoonbill	<i>Platalea minor</i>	Y	PGC, EN	0.0	0.5	0.0	0.2	0.0	0.0
Tufted Duck	<i>Aythya fuligula</i>	Y	LC	1.8	4.3	24.4	14.2	13.8	
Black Kite	<i>Milvus migrans</i>	Y	(RC)	0.3	0.5	0.4	0.6	0.3	0.3
Eastern Buzzard	<i>Buteo japonicus</i>	Y	-	0.3	0.0	0.0	0.0	0.0	0.0

Common Name	Scientific Name (3)	Wetland Dependent	Conservation Status (1)	Nov 2017 Mean (2)	Dec 2017 Mean (2)	Jan 2018 Mean (2)	Feb 2018 Mean (2)	Mar 2018 Mean (2)	Apr 2018 Mean (2)
White-breasted Waterhen	<i>Amaurornis phoenicurus</i>	Y	-	0.8	0.8	0.0	V	V	0.3
Black-winged Stilt	<i>Himantopus himantopus</i>	Y	RC	0.0	2.3	1.2	4.0	10.3	0.0
Pied Avocet	<i>Recurvirostra avosetta</i>	Y	RC	0.3	0.0	0.0	0.0	0.0	0.0
Pacific Golden Plover	<i>Pluvialis fulva</i>	Y	LC	0.0	0.0	1.6	0.0	0.0	0.0
Little Ringed Plover	<i>Charadrius dubius</i>	Y	(LC)	2.3	0.3	0.4	0.0	0.0	0.0
Common Greenshank	<i>Tringa nebularia</i>	Y	RC	0.0	0.0	0.0	0.2	0.0	0.0
Green Sandpiper	<i>Tringa ochropus</i>	Y	-	0.0	V	0.0	0.2	0.3	0.3
Wood Sandpiper	<i>Tringa glareola</i>	Y	LC	0.5	0.8	0.4	0.0	0.5	0.0
Common Sandpiper	<i>Actitis hypoleucos</i>	Y	-	1.8	2.8	2.0	2.4	3.3	3.5
Pied Kingfisher	<i>Ceryle rudis</i>	Y	(LC)	0.3	0.0	0.0	0.0	0.0	0.3
White-throated Kingfisher	<i>Halcyon smyrnensis</i>	Y	(LC)	0.8	0.5	0.2	0.6	0.3	0.0
Common Kingfisher	<i>Alcedo atthis</i>	Y	-	2.0	0.3	0.4	0.2	0.3	2.0
Eastern Yellow Wagtail	<i>Motacilla tschutschensis</i>	Y	-	2.0	1.3	0.2	0.4	V	0.0
White Wagtail	<i>Motacilla alba</i>	Y	-	4.0	3.0	2.0	4.6	2.8	1.8
Richard's Pipit	<i>Anthus richardi</i>	Y	-	0.0	0.5	0.0	0.0	0.0	0.0
Red-billed Starling	<i>Spodiopsar sericeus</i>	Y	(RC)*	8.5	1.8	1.4	V	0.5	0.3
White-shouldered Starling	<i>Sturnia sinensis</i>	Y	(LC)	0.0	0.0	0.0	0.0	0.0	V
Collared Crow	<i>Corvus torquatus</i>	Y	LC, NT	1.3	1.0	0.2	0.0	0.3	0.0
No. of Species Recorded				22	22	19	19	20	18

(1) Conservation status follows that of Fellowes *et al.* (2002) and BirdLife International listing (2017). Letters in parentheses indicate that the assessment is on the basis of restrictedness in breeding and for roosting sites rather than in general occurrence. (Fellowes et al. 2002)

(2) Refers to the mean number of individuals recorded in each survey in the Survey Area (excluding the WRA)

(3) Follows HK bird list (dated 2017-09-05)

V indicates the species is recorded outside regular surveys

\* Red-billed Starling is considered by Fellowes *et al.* (2002) to be of Global Concern. Since publication, however, the global population estimate has been revised and the species is not now considered globally threatened. A listing of Regional Concern (RC) based on the importance of the large roosts present near Deep Bay, is considered to be more appropriate. (Wetland Restoration Plan, Mott, 2008). Red-billed Starling is now listed as Least Concern by IUCN. (IUCN, 2016)

**Table B2: Summary of bird monitoring (for species of conservation importance and/or wetland-dependence) in the WRA**

Common Name	Scientific Name (3)	Wetland Dependent	Conservation Status (1)	Nov 2017 Mean (2)	Dec 2017 Mean (2)	Jan 2018 Mean (2)	Feb 2018 Mean (2)	Mar 2018 Mean (2)	Apr 2018 Mean (2)
Little Grebe	<i>Tachybaptus ruficollis</i>	Y	LC	1.8	3.3	0.6	1.2	1.0	2.8
Great Cormorant	<i>Phalacrocorax carbo</i>	Y	PRC	V	0.8	0.4	0.0	0.0	V
Grey Heron	<i>Ardea cinerea</i>	Y	PRC	2.5	2.5	1.0	0.4	1.5	0.0
Great Egret	<i>Ardea alba</i>	Y	PRC, (RC)	2.5	1.0	0.8	1.6	1.0	0.3
Intermediate Egret	<i>Egretta intermedia</i>	Y	RC	0.0	0.0	0.0	0.0	V	0.0
Little Egret	<i>Egretta garzetta</i>	Y	PRC, (RC)	62.3	15.0	4.0	2.8	5.8	4.0
Eastern Cattle Egret	<i>Bubulcus coromandus</i>	Y	(LC)	0.0	0.0	0.4	0.0	0.0	0.0
Chinese Pond Heron	<i>Ardeola bacchus</i>	Y	PRC, (RC)	4.0	7.0	1.0	0.6	0.3	1.3
Yellow Bittern	<i>Ixobrychus sinensis</i>	Y	(LC)	0.8	0.0	0.2	0.0	0.3	0.0
Black-crowned Night Heron	<i>Nycticorax nycticorax</i>	Y	(LC)	0.3	0.0	0.0	0.0	V	0.0
Black Kite	<i>Milvus migrans</i>	Y	(RC)	1.0	0.8	0.2	0.6	0.3	0.5
Crested Serpent Eagle	<i>Spilornis cheela</i>	N	(LC)	0.0	0.0	0.0	0.0	0.3	0.0
Greater Spotted Eagle	<i>Clanga clanga</i>	Y	GC	V	0.0	0.0	0.2	0.0	0.0

Common Name	Scientific Name (3)	Wetland Dependent	Conservation Status (1)	Nov 2017 Mean (2)	Dec 2017 Mean (2)	Jan 2018 Mean (2)	Feb 2018 Mean (2)	Mar 2018 Mean (2)	Apr 2018 Mean (2)
Eastern Imperial Eagle	<i>Aquila heliaca</i>	Y	-	0.0	V	0.0	0.0	0.0	0.0
Eastern Buzzard	<i>Buteo japonicus</i>	Y	-	0.0	0.0	V	V	V	
Eurasian Hobby	<i>Falco subbuteo</i>	Y	(LC)	0.0	0.0	0.0	0.0	0.0	V
White-breasted Waterhen	<i>Amaurornis phoenicurus</i>	Y	-	0.3	0.3	0.0	V	0.3	0.3
Common Moorhen	<i>Gallinula chloropus</i>	Y	-	0.8	0.0	V	V	V	V
Black-winged Stilt	<i>Himantopus himantopus</i>	Y	RC	0.0	0.0	0.4	0.4	0.0	0.0
Oriental Pratincole	<i>Glareola maldivarum</i>	Y	LC	0.0	0.0	0.0	V	0.0	0.0
Little Ringed Plover	<i>Charadrius dubius</i>	Y	(LC)	0.0	0.5	0.0	V	0.0	0.0
Common Greenshank	<i>Tringa nebularia</i>	Y	RC	0.0	0.0	V	V	V	V
Green Sandpiper	<i>Tringa ochropus</i>	Y	-	V	0.0	0.2	0.2	1.3	1.8
Wood Sandpiper	<i>Tringa glareola</i>	Y	LC	0.0	V	0.6	0.2	0.0	V
Common Sandpiper	<i>Actitis hypoleucos</i>	Y	0.0	0.8	0.3	0.8	0.4	1.5	1.3
Pied Kingfisher	<i>Ceryle rudis</i>	Y	(LC)	0.0	0.0	0.0	0.0	0.3	0.0
White-throated Kingfisher	<i>Halcyon smyrnensis</i>	Y	(LC)	0.3	0.5	0.2	V	0.0	0.0
Common Kingfisher	<i>Alcedo atthis</i>	Y	-	1.0	1.5	0.2	0.2	0.5	1.0
Eastern Yellow Wagtail	<i>Motacilla tschutschensis</i>	Y	-	0.0	V	V	0.2	1.3	0.0
White Wagtail	<i>Motacilla alba</i>	Y	-	1.5	3.5	3.2	1.6	1.5	0.3
Richard's Pipit	<i>Anthus richardi</i>	Y	-	0.0	0.3	0.0	0.0	0.0	0.0
Bluethroat	<i>Luscinia svecica</i>	N	LC	0.0	0.0	0.0	0.0	V	0.0
Red-billed Starling	<i>Spodiopsar sericeus</i>	Y	(RC)*	5.0	0.8	8.4	V	V	0.0

Common Name	Scientific Name (3)	Wetland Dependent	Conservation Status (1)	Nov 2017 Mean (2)	Dec 2017 Mean (2)	Jan 2018 Mean (2)	Feb 2018 Mean (2)	Mar 2018 Mean (2)	Apr 2018 Mean (2)
White-shouldered Starling	<i>Sturnia sinensis</i>	Y	(LC)	0.0	0.0	0.0	0.0	0.0	V
Collared Crow	<i>Corvus torquatus</i>	Y	LC, NT	0.0	V	0.0	1.2	0.3	V
<b>No. of Species Recorded</b>				<b>18</b>	<b>19</b>	<b>21</b>	<b>23</b>	<b>23</b>	<b>17</b>

(1) Conservation status follows that of Fellows et al. (2002) and BirdLife international listing (2017). Letters in parentheses indicate that the assessment is on the basis of restrictedness in breeding and for roosting sites rather than in general occurrence. (Fellows et al. 2002).

(2) Refers to mean number of individuals recorded in each survey in the Survey Area (excluding the WRA).

(3) Follows HK bird list (dated 2017-09-05).

V indicates the species is recorded outside regular surveys

\* Red-billed Starling is considered by Fellows *et al* (2002) to be of Global Concern. Since publication, however, the global population estimate has been revised and the species is not now considered globally threatened. A listing of Regional Concern (RC) based on the importance of the large roosts present near Deep Bay, is considered to be more appropriate. (Wetland Restoration Plan, Mott, 2008). Red-billed Starling is now listed as Least Concern by IUCN. (IUCN, 2016)

**Table B3: Conservation Status Categories of Bird Species**

Code	Category	Brief Description	Source
GC	Global Concern	Habitat loss/ damage in Hong Kong would pose significant threat to global survival.	Fellowes <i>et al.</i> (2002)
RC	Regional Concern	Habitat loss/ damage in Hong Kong would pose significant threat to regional survival.	
LC	Local Concern	Habitat loss/ damage in Hong Kong would pose significant threat to local survival.	
PGC	Potential Global Concern	Large, secure population in Hong Kong is of global significance.	
PRC	Potential Regional Concern	Large, secure population in Hong Kong is of regional significance.	
CR	Critically Endangered	Best available evidence indicates that it meets any of the criteria A to E for Critically Endangered, and it is therefore considered to be facing an extremely high risk of extinction in the wild.	BirdLife International (2017)
EN	Endangered	Best available evidence indicates that it meets any of the criteria A to E for Endangered, and it is therefore considered to be facing a high risk of extinction in the wild.	
VU	Vulnerable	Best available evidence indicates that it meets any of the criteria A to E for Vulnerable, and it is therefore considered to be facing a high risk of extinction in the wild.	
NT	Near Threatened	Does not qualify for Critically Endangered or Vulnerable now, but is close to qualifying for or is likely to qualify for a threatened category in the near future.	

**Table B4: Summary of Bird Species Recorded at WRA and their Respective Monthly Mean between September 2010 and October 2012**

Common name	Scientific name	Wetland Dependence	Conservation status	Sep- 10	Oct- 10	Nov- 10	Dec- 10	Jan- 11	Feb- 11	Mar- 11	Apr- 11	May- 11	Jun- 11	Jul- 11	Aug- 11	Sep- 11	Oct- 11	Nov- 11	Dec- 11	Jan- 12	Feb- 12	Mar- 12	Apr- 12	May- 12	Jun- 12	Jul- 12	Aug- 12	Sep- 12	Oct- 12
Little Grebe	<i>Tachybaptus ruficollis</i>	Y	LC	0.0	0.0	0.0	0.0	0.5	0.0	0.0	0.0	0.0	0.0	1.0	3.8	0.8	0.5	0.5	0.0	0.6	0.0	1.4	1.6	0.8	1.0	1.3	0.2	0.0	0.2
Great Cormorant	<i>Phalacrocorax carbo</i>	Y	PRC	0.0	0.0	0.0	0.0	0.8	0.0	0.0	0.0	0.0	0.0	0.0	0.0	0.0	0.3	0.3	0.4	1.2	0.7	0.2	0.0	0.0	0.0	0.0	0.0	0.0	0.0
Grey Heron	<i>Ardea cinerea</i>	Y	PRC	0.0	0.0	1.0	1.6	2.0	2.0	0.4	0.0	0.0	0.0	0.0	0.0	0.0	1.0	2.5	1.8	0.8	2.3	0.8	0.0	0.0	0.0	0.3	0.0	0.0	0.4
Purple Heron	<i>Ardea purpurea</i>	Y	RC	0.0	0.0	0.0	0.0	0.0	0.0	0.0	0.0	0.0	0.0	0.0	0.0	0.0	0.3	0.3	0.0	0.0	0.0	0.0	0.0	0.0	0.0	0.0	0.0	0.0	0.0
Great Egret	<i>Ardea alba</i>	Y	PRC, (RC)	0.0	0.0	0.0	0.4	14.0	2.0	0.2	0.5	0.3	0.5	0.3	0.0	1.5	1.8	0.8	1.2	0.6	0.7	0.6	0.6	1.0	0.3	0.0	0.4	0.5	1.5
Intermediate Egret	<i>Egretta intermedia</i>	Y	RC	0.0	0.0	0.0	0.0	1.7	0.8	0.2	0.0	0.0	0.0	0.0	0.0	1.5	1.5	1.5	1.0	0.6	0.7	0.6	0.6	0.0	0.0	0.0	0.0	0.3	0.9
Little Egret	<i>Egretta garzetta</i>	Y	PRC, (RC)	0.0	0.0	0.0	1.8	8.0	2.0	0.4	0.5	0.8	0.3	0.3	1.0	1.0	0.5	1.5	1.6	1.4	2.0	1.6	0.0	0.0	0.0	0.0	0.8	0.3	1.2
Eastern Cattle Egret	<i>Bubulcus coromandus</i>	Y	(LC)	0.0	0.0	0.0	0.0	0.0	0.0	0.0	0.0	0.0	0.3	11.8	0.0	1.3	0.3	0.0	0.0	0.4	0.0	0.0	0.0	0.0	0.3	0.0	0.2	0.0	0.0
Chinese Pond Heron	<i>Ardeola bacchus</i>	Y	PRC, (RC)	0.0	0.0	1.0	0.2	0.0	0.0	0.0	0.3	0.3	0.3	1.5	4.2	7.8	4.5	5.3	2.4	0.3	2.3	2.6	1.4	0.8	1.0	0.8	2.0	1.8	2.2
Yellow Bittern	<i>Ixobrychus sinensis</i>	Y	(LC)	0.0	0.0	0.0	0.0	0.0	0.0	0.0	0.0	0.0	0.0	0.0	0.0	0.0	0.3	0.3	0.0	0.0	0.0	0.0	0.0	0.0	0.0	0.0	0.0	0.0	0.0
Cinnamon Bittern	<i>Ixobrychus cinnamomeus</i>	Y	LC	0.0	0.0	0.0	0.0	0.0	0.0	0.0	0.0	0.0	0.0	0.0	0.0	0.0	0.0	0.0	0.0	0.0	0.0	0.0	0.0	0.0	0.0	0.0	0.0	0.0	0.0
Black-crowned Night Heron	<i>Nycticorax nycticorax</i>	Y	(LC)	0.0	0.0	0.0	0.0	0.0	0.0	0.0	0.0	0.0	0.0	0.0	0.0	0.0	0.0	0.0	0.0	0.0	0.0	0.0	0.0	0.0	0.0	0.0	0.0	0.0	0.0
Eurasian Spoonbill	<i>Platalea leucorodia</i>	Y	LC	0.0	0.0	0.0	0.0	0.0	0.0	0.0	0.0	0.0	0.0	0.0	0.0	0.0	0.0	0.0	0.0	0.0	0.0	0.0	0.0	0.0	0.0	0.0	0.0	0.0	0.0
Black-faced Spoonbill	<i>Platalea minor</i>	Y	PGC, EN	0.0	0.0	0.0	0.0	0.3	10.3	0.0	0.0	0.0	0.0	0.0	0.0	0.0	0.0	0.0	0.0	0.4	0.0	0.0	0.0	0.0	0.0	0.0	0.0	0.0	0.0
Mandarin Duck	<i>Aix galericulata</i>	Y	-	0.0	0.0	0.0	0.0	0.0	0.0	0.0	0.0	0.0	0.0	0.0	0.0	0.0	0.3	0.0	0.0	0.0	0.0	0.0	0.0	0.0	0.0	0.0	0.0	0.0	0.0
Eurasian Wigeon	<i>Anas penelope</i>	Y	RC	0.0	0.0	0.0	1.6	2.5	0.0	0.0	0.0	0.0	0.0	0.0	0.0	0.0	0.0	0.0	0.0	0.0	0.0	0.0	0.0	0.0	0.0	0.0	0.0	0.0	0.0
Eurasian Teal	<i>Anas crecca</i>	Y	RC	0.0	0.0	0.0	0.0	1.0	0.0	0.0	0.0	0.0	0.0	0.0	0.0	0.0	0.0	0.0	0.0	0.0	0.0	0.0	0.0	0.0	0.0	0.0	0.0	0.0	0.0
Northern Pintail	<i>Anas acuta</i>	Y	RC	0.0	0.0	0.0	0.2	7.0	0.0	0.0	0.0	0.0	0.0	0.0	0.0	0.0	0.0	0.0	0.0	0.0	0.0	0.0	0.0	0.0	0.0	0.0	0.0	0.0	0.0

Common name	Scientific name	Wetland Dependence	Conservation status	Sep- 10	Oct- 10	Nov- 10	Dec- 10	Jan- 11	Feb- 11	Mar- 11	Apr- 11	May- 11	Jun- 11	Jul- 11	Aug- 11	Sep- 11	Oct- 11	Nov- 11	Dec- 11	Jan- 12	Feb- 12	Mar- 12	Apr- 12	May- 12	Jun- 12	Jul- 12	Aug- 12	Sep- 12	Oct- 12
Northern Shoveler	<i>Anas clypeata</i>	Y	RC	0.0	0.0	0.0	0.0	0.0	0.0	0.0	0.0	0.0	0.0	0.0	0.0	0.0	0.0	0.0	0.0	0.0	0.0	0.0	0.0	0.0	0.0	0.0	0.0	0.0	0.0
Tufted Duck	<i>Aythya fuligula</i>	Y	LC	0.0	0.0	0.0	0.0	0.0	0.0	0.0	0.0	0.0	0.0	0.0	0.0	0.0	0.0	0.0	0.0	0.0	0.0	0.0	0.0	0.0	0.0	0.0	0.0	0.0	0.0
Garganey	<i>Anas querquedula</i>	Y	-	0.0	0.0	0.0	0.0	0.0	0.0	0.0	0.0	0.0	0.0	0.0	0.0	0.0	0.0	0.0	0.0	0.0	0.0	0.0	0.0	0.0	0.0	0.0	0.0	0.0	0.0
Western Osprey	<i>Pandion haliaetus</i>	Y	RC	0.0	0.0	0.0	0.2	0.0	0.0	0.0	0.0	0.0	0.0	0.0	0.0	0.0	0.0	0.0	0.0	0.0	0.0	0.0	0.0	0.0	0.0	0.0	0.0	0.0	0.0
Black-winged Kite	<i>Elanus caeruleus</i>	Y	LC	0.0	0.0	0.0	0.0	0.0	0.0	0.0	0.0	0.0	0.0	0.0	0.0	0.0	0.0	0.0	0.0	0.0	0.0	0.0	0.0	0.0	0.0	0.0	0.0	0.0	0.0
Black Kite	<i>Milvus migrans</i>	N	(RC)	0.0	0.0	0.0	0.0	0.8	0.3	0.2	0.0	0.3	0.0	0.0	0.0	0.3	0.0	0.0	0.0	0.2	0.0	0.0	0.2	0.5	0.0	0.0	0.0	0.0	0.4
Crested Serpent Eagle	<i>Spilornis cheela</i>	N	(LC)	0.0	0.0	0.0	0.0	0.0	0.0	0.0	0.0	0.0	0.0	0.0	0.0	0.0	0.0	0.0	0.0	0.0	0.0	0.0	0.0	0.0	0.0	0.0	0.0	0.0	0.0
Eastern Buzzard	<i>Buteo japonicus</i>	N	-	0.0	0.0	0.0	0.0	0.0	0.0	0.2	0.0	0.0	0.0	0.0	0.0	0.0	0.0	0.0	0.0	0.0	0.0	0.0	0.0	0.0	0.0	0.0	0.0	0.0	0.0
Common Kestrel	<i>Falco tinnunculus</i>	N	-	0.0	0.0	1.0	0.4	1.0	0.3	0.4	0.0	0.0	0.0	0.0	0.0	0.0	0.0	0.0	0.0	0.0	0.0	0.0	0.0	0.0	0.0	0.0	0.0	0.0	0.0
Eurasian Hobby	<i>Falco subbuteo</i>	Y	(LC)	0.0	0.0	0.0	0.0	0.0	0.0	0.0	0.0	0.0	0.0	0.0	0.0	0.0	0.0	0.0	0.0	0.0	0.0	0.0	0.0	0.0	0.0	0.0	0.0	0.0	0.0
Peregrine Falcon	<i>Falco peregrinus</i>	N	(LC)	0.0	0.0	0.0	0.0	0.0	0.0	0.0	0.0	0.0	0.0	0.0	0.0	0.0	0.0	0.0	0.0	0.0	0.0	0.0	0.0	0.0	0.0	0.0	0.0	0.0	0.0
Greater Spotted Eagle	<i>Clanga clanga</i>	N	GC	0.0	0.0	0.0	0.0	0.0	0.0	0.0	0.0	0.0	0.0	0.0	0.0	0.0	0.0	0.0	0.0	0.0	0.0	0.0	0.0	0.0	0.0	0.0	0.0	0.0	0.0
Eastern Imperial Eagle	<i>Aquila heliaca</i>	Y	-	0.0	0.0	0.0	0.0	0.0	0.0	0.0	0.0	0.0	0.0	0.0	0.0	0.0	0.0	0.0	0.0	0.0	0.0	0.0	0.0	0.0	0.0	0.0	0.0	0.0	0.0
Japanese Quail	<i>Coturnix japonica</i>	Y	LC	0.0	0.0	0.0	0.0	0.0	0.0	0.0	0.0	0.0	0.0	0.0	0.0	0.0	0.0	0.0	0.0	0.0	0.0	0.0	0.0	0.0	0.0	0.0	0.0	0.0	0.0
Baillon's Crane	<i>Porzana pusilla</i>	Y	LC	0.0	0.0	0.0	0.0	0.0	0.0	0.0	0.0	0.0	0.0	0.0	0.0	0.0	0.0	0.0	0.0	0.0	0.0	0.0	0.0	0.0	0.0	0.0	0.0	0.0	0.0
White-breasted Waterhen	<i>Amauromis phoenicurus</i>	Y	-	0.0	0.0	0.0	0.0	0.0	0.0	0.0	0.0	0.5	0.8	1.3	2.6	1.3	1.5	0.3	0.0	0.0	0.0	0.4	0.0	0.0	0.5	1.0	0.5	0.0	0.0
Watercock	<i>Gallicrex cinerea</i>	Y	RC	0.0	0.0	0.0	0.0	0.0	0.0	0.0	0.0	0.0	0.0	0.0	0.0	0.0	0.0	0.0	0.0	0.0	0.0	0.0	0.0	0.0	0.0	0.0	0.0	0.0	0.0
Common Moorhen	<i>Gallinula chloropus</i>	Y	-	0.0	0.0	0.0	0.0	0.0	0.0	0.0	0.0	0.0	0.0	0.0	0.0	0.0	0.0	0.0	0.0	0.0	0.0	0.0	0.0	0.0	0.0	0.2	0.0	0.0	0.0



Common name	Scientific name	Wetland Dependence	Conservation status	Sep- 10	Oct- 10	Nov- 10	Dec- 10	Jan- 11	Feb- 11	Mar- 11	Apr- 11	May- 11	Jun- 11	Jul- 11	Aug- 11	Sep- 11	Oct- 11	Nov- 11	Dec- 11	Jan- 12	Feb- 12	Mar- 12	Apr- 12	May- 12	Jun- 12	Jul- 12	Aug- 12	Sep- 12	Oct- 12
Pheasant-tailed Jacana	<i>Hydrophasianus chirurgus</i>	Y	LC	0.0	0.0	0.0	0.0	0.0	0.0	0.0	0.0	0.0	0.0	0.0	0.0	0.0	0.0	0.3	0.0	0.0	0.0	0.0	0.0	0.0	0.0	0.0	0.0	0.0	0.0
Greater Painted-snipe	<i>Rostratula benghalensis</i>	Y	LC	0.0	0.0	0.0	0.0	0.0	0.0	0.0	0.5	0.0	0.0	0.0	0.0	0.0	0.0	0.0	0.0	0.0	0.0	0.0	0.0	0.0	0.0	0.0	0.0	0.0	0.0
Black-winged Stilt	<i>Himantopus himantopus</i>	Y	RC	8.0	0.0	0.0	0.0	0.0	0.0	0.0	0.0	0.0	0.0	0.0	0.0	0.0	1.0	0.0	0.0	0.0	0.0	0.0	0.0	0.0	0.0	0.0	0.0	0.0	0.0
Pied Avocet	<i>Recurvirostra avosetta</i>	Y	RC	0.0	0.0	0.0	0.2	0.0	0.0	0.0	0.0	0.0	0.0	0.0	0.0	0.0	0.0	0.0	0.0	0.0	0.0	0.2	0.0	0.0	0.0	0.0	0.0	0.0	0.0
Oriental Pratincole	<i>Glareola maldivarum</i>	Y	LC	0.0	0.0	0.0	0.0	0.0	0.0	0.0	2.5	0.0	0.0	0.0	0.0	0.0	0.0	0.0	0.0	0.0	0.0	0.0	0.0	0.0	0.0	0.0	0.0	0.0	0.0
Little Ringed Plover	<i>Charadrius dubius</i>	Y	(LC)	3.0	0.0	24.5	7.4	3.8	9.0	6.8	10.5	5.5	0.5	0.0	0.2	0.0	0.0	0.0	0.0	0.0	1.0	0.6	0.0	0.0	0.0	0.0	0.0	0.0	0.0
Kentish Plover	<i>Charadrius alexandrinus</i>	Y	RC	0.0	0.0	0.0	0.0	0.0	0.0	0.0	0.0	0.0	0.0	0.0	0.0	0.0	0.0	0.0	0.0	0.0	0.0	0.0	0.0	0.0	0.0	0.0	0.0	0.0	0.0
Spotted Redshank	<i>Tringa erythropus</i>	Y	RC	0.0	0.0	0.0	0.0	0.0	0.0	0.0	0.0	0.0	0.0	0.0	0.0	0.0	0.0	0.0	0.0	0.0	0.0	0.0	0.0	0.0	0.0	0.0	0.0	0.0	0.0
Common Redshank	<i>Tringa totanus</i>	Y	RC	0.0	0.0	0.0	0.0	0.0	0.0	0.0	0.0	0.0	0.0	0.0	0.0	0.0	0.0	0.0	0.0	0.0	0.0	0.0	0.0	0.0	0.0	0.0	0.0	0.0	0.0
Marsh Sandpiper	<i>Tringa stagnatilis</i>	Y	RC	0.0	0.0	0.0	0.0	0.0	0.0	0.0	0.0	0.0	0.0	0.0	0.0	0.0	0.0	0.0	0.0	0.0	0.0	0.0	0.0	0.0	0.0	0.0	0.0	0.0	0.0
Common Greenshank	<i>Tringa nebularia</i>	Y	RC	0.0	0.0	0.5	0.0	0.0	0.0	0.0	0.0	0.0	0.0	0.0	0.0	0.0	0.0	0.3	0.8	0.2	0.0	0.0	0.0	0.0	0.0	0.0	0.0	0.0	0.0
Green Sandpiper	<i>Tringa ochropus</i>	Y	-	0.0	0.0	1.0	0.4	0.5	0.5	0.4	0.0	0.0	0.0	0.3	0.0	0.0	0.0	0.0	0.0	0.0	0.2	0.0	0.2	0.4	0.0	0.0	0.2	0.0	0.0
Wood Sandpiper	<i>Tringa glareola</i>	Y	LC	0.0	0.0	0.0	0.0	0.0	0.5	1.2	0.0	0.0	0.0	0.0	0.0	0.0	0.0	0.0	0.0	0.0	0.8	0.3	0.0	0.0	0.0	0.0	0.6	0.0	0.0
Common Sandpiper	<i>Actitis hypoleucos</i>	Y	-	1.0	0.0	0.5	1.0	0.0	0.5	0.6	1.0	0.3	0.0	0.0	0.2	0.0	0.0	0.0	0.0	0.0	0.0	0.4	0.2	0.0	0.0	0.0	0.0	0.0	0.9
Eurasian Woodcock	<i>Scolopax rusticola</i>	Y	-	0.0	0.0	0.0	0.0	0.0	0.0	0.0	0.0	0.0	0.0	0.0	0.0	0.0	0.0	0.0	0.0	0.0	0.0	0.0	0.0	0.0	0.0	0.0	0.0	0.0	0.0
Pintail/ Swinhoe's Snipe^	<i>Gallinago stenura/ G. megala</i>	Y	LC^	0.0	0.0	0.5	0.0	0.0	0.0	0.0	0.0	0.0	0.0	0.0	0.0	0.0	0.3	0.0	0.0	0.0	0.0	0.0	0.0	0.0	0.0	0.0	0.0	0.0	0.0
Common Snipe	<i>Gallinago gallinago</i>	Y	-	0.0	0.0	0.0	0.0	0.0	0.3	0.2	0.0	0.0	0.0	0.0	0.0	0.0	0.0	0.0	0.0	0.0	0.0	0.0	0.0	0.0	0.0	0.0	0.0	0.0	0.0

Common name	Scientific name	Wetland Dependence	Conservation status	Sep- 10	Oct- 10	Nov- 10	Dec- 10	Jan- 11	Feb- 11	Mar- 11	Apr- 11	May- 11	Jun- 11	Jul- 11	Aug- 11	Sep- 11	Oct- 11	Nov- 11	Dec- 11	Jan- 12	Feb- 12	Mar- 12	Apr- 12	May- 12	Jun- 12	Jul- 12	Aug- 12	Sep- 12	Oct- 12
Red-necked Stint	<i>Calidris ruficollis</i>	Y	LC	3.0	0.0	0.0	0.0	0.0	0.0	0.0	0.0	0.0	0.0	0.0	0.0	0.0	0.0	0.0	0.0	0.0	0.0	0.0	0.0	0.0	0.0	0.0	0.0	0.0	0.0
Temminck's Stint	<i>Calidris temminckii</i>	Y	LC	0.0	0.0	0.5	0.0	0.0	2.5	0.4	1.3	0.0	0.0	0.0	0.0	0.0	0.0	0.0	0.0	0.0	0.0	0.0	0.0	0.0	0.0	0.0	0.0	0.0	0.0
Long-toed Stint	<i>Calidris subminuta</i>	Y	LC	0.0	0.0	0.0	0.0	0.0	0.0	0.0	0.0	0.0	0.0	0.0	0.0	0.0	0.0	0.0	0.0	0.0	0.3	0.0	0.0	0.0	0.0	0.0	0.0	0.0	0.0
Whiskered Tern	<i>Chlidonias hybrida</i>	Y	-	0.0	0.0	0.0	0.0	0.0	0.0	0.0	0.0	0.0	0.0	0.0	0.0	0.0	0.0	0.0	0.0	0.0	0.0	0.0	0.0	1.3	0.0	0.0	0.0	0.0	0.0
Domestic Pigeon	<i>Columba livia</i>	N	-	0.0	0.0	0.0	0.0	0.0	0.0	0.0	0.0	0.0	0.0	0.0	DS	0.0	0.0	0.0	0.0	0.0	0.0	0.0	0.0	0.0	0.0	0.0	0.0	0.0	0.0
Eurasian Collared Dove	<i>Streptopelia decaocto</i>	N	-	0.0	0.0	0.0	0.0	0.0	0.0	0.0	0.0	0.0	0.0	0.0	0.0	0.0	0.0	0.0	0.0	0.0	0.0	0.0	0.0	0.0	0.0	0.0	0.0	0.0	0.0
Oriental Turtle Dove	<i>Streptopelia orientalis</i>	N	-	0.0	0.0	0.0	0.0	0.0	0.0	0.0	0.0	0.0	0.0	0.0	0.0	0.2	0.0	0.0	0.0	0.0	0.0	0.0	0.0	0.0	0.0	0.0	0.0	0.0	0.0
Red Turtle Dove	<i>Streptopelia tranquebarica</i>	N	-	0.0	0.0	0.0	0.0	0.0	0.0	0.0	0.0	0.0	0.0	0.0	0.0	0.0	0.0	0.0	0.0	0.0	0.0	0.0	0.0	0.0	0.0	0.0	0.0	0.0	0.0
Spotted Dove	<i>Spilopelia chinensis</i>	N	-	0.0	0.0	0.0	0.0	0.0	0.0	0.0	0.0	0.0	0.0	0.0	0.0	0.0	0.0	0.0	DS	0.0	DS	DS	0.0	DS	0.0	0.0	DS	0.0	0.6
Asian Koel	<i>Eudynamys scolopaceus</i>	N	-	0.0	0.0	0.0	0.0	0.0	0.0	0.0	0.0	0.0	0.0	0.0	0.0	0.0	0.0	0.0	0.0	0.0	0.0	0.0	0.0	0.0	0.0	0.0	0.0	0.0	0.0
Greater Coucal#	<i>Centropus sinensis</i>	N	-	0.0	0.0	0.0	0.0	0.0	0.0	0.0	0.0	0.0	0.0	0.0	0.0	0.0	0.0	0.0	0.0	0.0	0.0	0.0	0.0	0.0	0.0	0.0	0.0	0.0	0.0
Eurasian Eagle Owl	<i>Bubo bubo</i>	N	RC	0.0	0.0	0.0	0.0	0.0	0.0	0.0	0.0	0.0	0.0	0.0	0.0	0.0	0.0	0.0	0.0	0.0	0.0	0.0	0.0	0.0	0.0	0.0	0.0	0.0	0.0
Savanna Nightjar	<i>Caprimulgus affinis</i>	N	-	0.0	0.0	0.0	0.0	0.0	0.0	0.0	0.0	0.0	0.0	0.0	0.0	0.0	0.0	0.0	0.0	0.0	0.0	0.0	0.0	0.0	0.0	0.0	0.0	0.0	0.0
Pacific Swift	<i>Apus pacificus</i>	N	(LC)	0.0	0.0	0.0	0.0	0.0	0.0	0.0	0.3	0.0	0.0	0.0	0.0	0.0	0.0	0.0	0.0	0.0	0.0	0.0	0.0	0.0	0.0	0.0	0.0	0.0	0.0
House Swift	<i>Apus nipalensis</i>	N	-	10.0	0.0	0.0	0.0	0.0	0.0	0.2	0.0	0.0	0.0	0.0	0.0	0.0	0.0	0.0	0.0	0.0	DS	DS	0.0	0.0	0.0	0.0	0.0	0.0	0.0
Pied Kingfisher	<i>Ceryle rudis</i>	Y	(LC)	0.0	0.0	0.0	0.2	0.3	0.5	0.2	0.0	0.0	0.3	0.0	0.0	0.0	0.0	0.0	0.0	0.0	0.0	0.2	0.0	0.0	0.0	0.5	0.0	0.0	0.0
Common Kingfisher	<i>Alcedo atthis</i>	Y	-	0.0	0.0	0.0	0.4	0.5	0.3	0.0	0.3	0.5	1.0	0.3	1.0	0.8	0.5	0.8	1.0	0.4	0.0	0.8	0.0	0.0	0.0	0.0	0.6	0.0	0.4
White-throated Kingfisher	<i>Halcyon smyrnensis</i>	N	(LC)	0.0	0.0	0.0	0.0	0.0	0.0	0.0	0.0	0.0	0.0	0.0	0.0	0.0	0.0	0.3	0.0	0.0	0.0	0.0	0.0	0.0	0.0	0.3	0.0	0.0	0.0

Common name	Scientific name	Wetland Dependence	Conservation status	Sep- 10	Oct- 10	Nov- 10	Dec- 10	Jan- 11	Feb- 11	Mar- 11	Apr- 11	May- 11	Jun- 11	Jul- 11	Aug- 11	Sep- 11	Oct- 11	Nov- 11	Dec- 11	Jan- 12	Feb- 12	Mar- 12	Apr- 12	May- 12	Jun- 12	Jul- 12	Aug- 12	Sep- 12	Oct- 12
Eurasian Hoopoe	<i>Upupa epops</i>	N	-	0.0	0.0	0.0	0.0	0.0	0.0	0.0	0.0	0.0	0.0	0.0	0.0	0.0	0.0	0.0	0.0	0.0	0.0	0.0	0.0	0.0	0.0	0.0	0.0	0.0	0.0
Barn Swallow	<i>Hirundo rustica</i>	N	-	25.0	0.0	0.0	0.0	0.0	1.5	0.0	0.0	0.0	0.0	0.0	0.0	0.0	0.0	0.0	0.0	0.0	DS	DS	0.0	DS	0.0	DS	DS	3.0	0.0
Red-rumped Swallow	<i>Hirundo daurica</i>	N	-	0.0	0.0	0.0	0.0	0.0	0.0	0.0	0.0	0.0	0.0	0.0	0.0	0.0	0.0	0.0	0.0	0.0	0.0	0.0	0.0	0.0	0.0	0.0	0.0	0.0	0.0
Eastern Yellow Wagtail	<i>Motacilla tschutschensis</i>	Y	-	0.0	0.0	14.5	10.2	15.0	23.5	8.2	11.8	1.8	0.0	0.0	0.2	0.8	1.5	2.0	1.2	0.6	0.0	4.0	1.0	0.0	0.0	0.0	0.0	0.0	0.0
Grey Wagtail	<i>Motacilla cinerea</i>	Y	-	0.0	0.0	0.0	0.2	0.0	0.3	0.2	0.0	0.0	0.0	0.0	0.0	0.3	0.0	0.0	0.0	0.0	0.0	0.0	0.0	0.0	0.0	0.0	0.0	0.0	0.0
White Wagtail	<i>Motacilla alba</i>	Y	-	3.0	0.0	0.0	1.8	0.0	0.0	0.0	0.0	0.0	0.0	0.0	0.0	0.0	0.0	0.0	DS	DS	DS	DS	DS	0.0	0.0	0.0	DS	1.8	3.2
Richard's Pipit	<i>Anthus richardi</i>	Y	-	0.0	0.0	1.5	0.8	0.5	1.0	1.0	1.8	0.5	0.0	0.0	0.0	0.0	0.3	0.0	DS	0.0	DS	DS	DS	0.0	0.0	0.0	0.0	0.0	0.0
Olive-backed Pipit	<i>Anthus hodgsoni</i>	N	-	0.0	0.0	0.5	0.0	0.0	0.0	0.0	0.0	0.0	0.0	0.0	0.0	0.0	0.0	0.0	DS	0.0	0.0	0.0	0.0	0.0	0.0	0.0	0.0	0.0	0.0
Red-throated Pipit	<i>Anthus cervinus</i>	N	LC	0.0	2.0	2.5	1.2	0.5	0.5	0.2	0.0	0.0	0.0	0.0	0.0	0.0	0.0	0.0	0.0	0.0	0.0	0.0	0.4	0.0	0.0	0.0	0.0	0.0	0.7
Buff-bellied Pipit	<i>Anthus rubescens</i>	N	LC	0.0	1.0	1.5	0.0	0.0	0.0	0.0	0.0	0.0	0.0	0.0	0.0	0.0	0.0	0.0	0.0	0.0	0.0	0.0	0.0	0.0	0.0	0.0	0.0	0.0	0.0
Red-whiskered Bulbul	<i>Pycnonotus jocosus</i>	N	-	0.0	0.0	0.0	0.0	0.0	0.0	0.0	0.0	0.0	0.0	0.0	0.0	0.0	0.0	0.0	0.0	0.0	0.0	0.0	0.0	0.0	0.0	0.0	0.0	0.0	0.0
Chinese Bulbul	<i>Pycnonotus sinensis</i>	N	-	0.0	0.0	0.0	0.0	0.0	0.0	0.0	0.0	0.0	0.0	0.0	0.0	0.0	0.0	0.0	0.0	0.0	0.0	DS	0.0	DS	0.0	DS	0.0	0.0	0.0
Bull-headed Shrike	<i>Lanius bucephalus</i>	N	-	0.0	0.0	0.0	0.0	0.0	0.0	0.0	0.0	0.0	0.0	0.0	0.0	0.0	0.0	0.0	0.0	0.0	0.0	0.0	0.0	0.0	0.0	0.0	0.0	0.0	0.0
Brown Shrike	<i>Lanius cristatus</i>	N	-	0.0	0.0	0.0	0.0	0.0	0.0	0.0	0.0	0.0	0.0	0.0	0.0	0.0	0.0	0.0	0.0	0.0	0.0	0.0	0.0	0.0	0.0	0.0	0.0	0.0	0.0
Long-tailed Shrike	<i>Lanius schach</i>	N	-	0.0	0.0	0.0	0.0	0.0	0.0	0.0	0.0	0.0	0.0	0.0	0.0	0.0	0.0	0.0	0.0	DS	DS	0.0	0.0	0.0	0.0	DS	DS	0.0	0.0
Oriental Magpie Robin	<i>Copsychus saularis</i>	N	-	0.0	0.0	0.0	0.0	0.0	0.0	0.0	0.0	0.0	0.0	0.0	0.0	0.0	0.0	0.0	0.0	0.0	DS	0.0	0.0	0.0	0.0	0.0	0.0	0.0	0.0
Daurian Redstart	<i>Phoenicurus aureus</i>	N	-	0.0	0.0	0.0	0.0	0.0	0.0	0.0	0.0	0.0	0.0	0.0	0.0	0.0	0.0	0.0	0.0	0.0	0.0	0.0	0.0	0.0	0.0	0.0	0.0	0.0	0.0
Stejneger's Stonechat	<i>Saxicola stejnegeri</i>	N	-	0.0	3.0	0.5	1.0	1.0	0.8	0.2	0.3	0.0	0.0	0.0	0.0	0.0	1.0	0.0	DS	DS	0.0	DS	0.0	0.0	0.0	0.0	0.0	0.0	0.0
Masked Laughingthrush	<i>Garrulax perspicillatus</i>	N	-	0.0	0.0	0.0	0.0	0.0	0.0	0.0	0.0	0.0	0.0	0.0	0.0	0.0	0.0	0.0	0.0	0.0	0.0	0.0	0.0	0.0	0.0	DS	0.0	0.0	0.0

Common name	Scientific name	Wetland Dependence	Conservation status	Sep- 10	Oct- 10	Nov- 10	Dec- 10	Jan- 11	Feb- 11	Mar- 11	Apr- 11	May- 11	Jun- 11	Jul- 11	Aug- 11	Sep- 11	Oct- 11	Nov- 11	Dec- 11	Jan- 12	Feb- 12	Mar- 12	Apr- 12	May- 12	Jun- 12	Jul- 12	Aug- 12	Sep- 12	Oct- 12
Lanceolated Warbler	<i>Locustella lanceolata</i>	Y	-	0.0	0.0	0.0	0.0	0.0	0.0	0.0	0.0	0.0	0.0	0.0	0.0	0.0	0.3	0.0	0.0	0.0	0.0	0.0	0.0	0.0	0.0	0.0	0.0	0.0	0.0
Pallas's Grasshopper Warbler	<i>Locustella certhiola</i>	Y	LC	0.0	0.0	0.0	0.0	0.0	0.0	0.0	0.0	0.0	0.0	0.0	0.0	0.0	0.3	0.0	0.0	0.0	0.0	0.0	0.0	0.0	0.0	0.0	0.0	0.0	0.0
Oriental Reed Warbler	<i>Acrocephalus orientalis</i>	Y	-	0.0	0.0	0.0	0.0	0.0	0.0	0.0	0.0	0.0	0.0	0.0	0.0	0.0	0.0	0.0	0.0	0.0	0.0	0.0	0.0	0.0	0.0	0.0	0.0	0.0	0.0
Thick-billed Warbler	<i>Acrocephalus aedon</i>	Y	LC	0.0	0.0	0.0	0.0	0.0	0.0	0.0	0.0	0.0	0.0	0.0	0.0	0.0	0.0	0.0	0.0	0.0	0.0	0.0	0.0	0.0	0.0	0.0	0.0	0.0	0.0
Black-browed Reed Warbler	<i>Acrocephalus bistrigiceps</i>	Y	-	0.0	0.0	0.0	0.0	0.0	0.0	0.0	0.0	0.0	0.0	0.0	0.0	0.0	0.3	0.0	0.0	0.0	0.0	0.0	0.0	0.0	0.0	0.0	0.0	0.0	0.0
Common Tailorbird	<i>Orthotomus sutorius</i>	N	-	0.0	0.0	0.0	0.0	0.0	0.0	0.0	0.0	0.0	0.0	0.0	0.0	0.0	0.0	0.0	0.0	0.0	0.0	0.0	0.0	0.0	0.0	0.0	0.0	0.0	0.0
Zitting Cisticola	<i>Cisticola juncidis</i>	Y	LC	0.0	0.0	0.0	0.0	0.0	0.0	0.2	1.5	2.5	2.5	1.0	0.4		0.3	0.8	1.8	0.2	0.3	0.6	0.0	0.0	0.0	0.0	0.2	0.0	0.0
Yellow-bellied Prinia	<i>Prinia flaviventris</i>	N	-	0.0	0.0	0.0	0.0	0.0	0.0	0.0	0.0	0.0	0.0	0.0	0.0	0.0	0.0	0.0	0.0	DS	0.0	DS	0.0	DS	0.0	DS	DS	0.8	0.4
Plain Prinia	<i>Prinia inornata</i>	N	-	0.0	0.0	0.0	0.0	0.0	0.0	0.0	0.0	0.0	0.0	0.0	0.0	0.0	0.0	0.0	0.0	0.0	0.0	DS	0.0	DS	0.0	DS	DS	0.0	0.0
Dusky Warbler	<i>Phylloscopus fuscatus</i>	N	-	0.0	0.0	0.0	0.0	0.0	0.0	0.0	0.0	0.0	0.0	0.0	0.0	0.0	0.5	0.0	DS	0.0	0.0	0.0	0.0	0.0	0.0	0.0	0.0	0.0	0.0
Pallas's Leaf Warbler	<i>Phylloscopus proregulus</i>	N	-	0.0	0.0	0.0	0.0	0.0	0.0	0.0	0.0	0.0	0.0	0.0	0.0	0.0	0.0	0.0	0.0	0.0	0.0	0.0	0.0	0.0	0.0	0.0	0.0	0.0	0.0
Yellow-browed warbler	<i>Phylloscopus inornatus</i>	N	-	0.0	0.0	0.0	0.0	0.0	0.0	0.0	0.0	0.0	0.0	0.0	0.0	0.0	0.0	0.0	0.0	0.0	0.0	0.0	0.0	0.0	0.0	0.0	0.0	0.0	1.4
Chinese Penduline-Tit	<i>Remiz consobrinus</i>	Y	RC	0.0	0.0	0.0	0.0	0.0	0.0	0.0	0.0	0.0	0.0	0.0	0.0	0.0	0.0	0.0	0.0	0.0	0.0	1.2	0.2	0.0	0.0	0.0	0.0	0.0	0.0
Japanese White-eye	<i>Zosterops japonica</i>	N	-	0.0	0.0	0.0	0.0	0.0	0.0	0.0	0.0	0.0	0.0	0.0	0.0	0.0	0.0	0.0	0.0	0.0	0.0	0.0	0.0	0.0	0.0	0.0	0.0	0.0	0.0
Little Bunting	<i>Emberiza pusilla</i>	N	-	0.0	0.0	0.5	0.0	0.0	0.0	0.0	0.0	0.0	0.0	0.0	0.0	0.0	0.0	0.0	0.0	0.0	0.0	0.0	0.0	0.0	0.0	0.0	0.0	0.0	0.0
Black-faced Bunting	<i>Emberiza spodocephala</i>	N	-	0.0	0.0	0.0	0.0	0.0	0.0	0.0	0.5	0.0	0.0	0.0	0.0	0.0	0.0	0.0	0.0	0.0	0.0	0.0	0.0	0.0	0.0	0.0	0.0	0.0	0.0
Chinese Grosbeak	<i>Eophona migratoria</i>	N	LC	0.0	0.0	0.0	0.0	0.0	0.0	0.0	0.0	0.0	0.0	0.0	0.0	0.0	0.3	0.0	0.0	0.0	0.0	0.0	0.0	0.0	0.0	0.0	0.0	0.0	0.0

Common name	Scientific name	Wetland Dependence	Conservation status	Sep- 10	Oct- 10	Nov- 10	Dec- 10	Jan- 11	Feb- 11	Mar- 11	Apr- 11	May- 11	Jun- 11	Jul- 11	Aug- 11	Sep- 11	Oct- 11	Nov- 11	Dec- 11	Jan- 12	Feb- 12	Mar- 12	Apr- 12	May- 12	Jun- 12	Jul- 12	Aug- 12	Sep- 12	Oct- 12
Scaly-breasted Munia	<i>Lonchura punctulata</i>	N	-	20.0	0.0	0.0	0.0	2.5	0.0	15.0	7.5	0.0	0.0	0.0	0.0	0.0	0.0	0.0	0.0	0.0	0.0	0.0	DS	0.0	DS	DS	1.5	0.0	
Eurasian Tree Sparrow	<i>Passer montanus</i>	N	-	0.0	0.0	0.0	0.0	0.0	0.0	0.0	0.0	0.0	0.0	0.0	0.0	0.0	0.0	0.0	0.0	0.0	0.0	DS	0.0	DS	0.0	DS	0.0	0.0	
Red-billed Starling	<i>Spodiopsar sericeus</i>	Y	(RC)*	0.0	0.0	0.0	0.0	0.0	0.0	0.0	0.0	0.0	0.0	0.0	0.0	0.3	0.0	0.8	1.6	6.6	39.0	17.4	0.0	0.0	0.0	0.0	0.0	0.0	
White-cheeked Starling	<i>Spodiopsar cineraceus</i>	Y	PRC	0.0	0.0	0.0	0.0	0.0	0.0	0.0	0.0	0.0	0.0	0.0	6.6	0.0	0.0	0.0	0.0	0.0	0.0	0.0	0.0	0.0	0.0	0.0	0.0	0.0	
Black-collared Starling	<i>Gracupica nigricollis</i>	N	-	0.0	0.0	0.0	0.0	0.0	0.0	0.0	0.0	0.0	0.0	0.0	0.0	0.0	0.0	0.0	DS	DS	DS	DS	0.0	0.0	0.0	0.0	DS	0.0	
White-shouldered Starling	<i>Sturnia sinensis</i>	Y	(LC)	0.0	0.0	0.0	0.0	0.0	0.0	0.0	0.0	0.3	0.0	0.5	2.4	0.0	0.0	0.0	0.0	0.0	0.0	0.0	0.0	0.0	0.0	0.0	0.0	0.0	
Common Myna	<i>Acridotheres tristis</i>	N	-	0.0	0.0	0.0	0.0	0.0	0.0	0.0	0.0	0.0	0.0	0.0	0.0	0.0	0.0	0.0	0.0	0.0	DS	0.0	0.0	0.0	0.0	0.0	0.0	0.0	
Crested Myna	<i>Acridotheres cristatellus</i>	N	-	3.0	0.0	0.0	0.0	0.0	0.0	0.0	0.0	0.0	0.0	0.0	0.0	0.0	0.0	0.0	DS	0.0	0.0	0.0	0.0	DS	0.0	DS	0.0	V	
Black-napped Oriole	<i>Oriolus chinensis</i>	N	LC	0.0	0.0	0.0	0.0	0.0	0.0	0.0	0.0	0.0	0.0	0.0	0.0	1.0	0.0	0.0	0.0	0.0	0.0	0.0	0.0	0.0	0.0	0.0	0.0	0.0	
Black Drongo	<i>Dicrurus macrocercus</i>	N	-	0.0	0.0	0.0	0.0	0.0	0.0	0.0	0.0	0.0	0.0	0.0	0.0	0.0	0.0	0.0	0.0	0.0	0.0	0.0	0.0	0.0	0.0	DS	DS	0.0	
Azure-winged Magpie	<i>Cyanopica cyanus</i>	N	-	0.0	0.0	0.0	0.0	0.0	0.0	0.0	0.0	0.0	0.0	0.0	0.0	0.0	0.0	0.0	0.0	0.0	0.0	0.0	0.0	0.0	0.0	0.0	0.0	0.0	
Eurasian Magpie	<i>Pica pica</i>	N	-	0.0	0.0	0.0	0.0	0.0	0.0	0.0	0.0	0.0	0.0	0.0	0.0	0.0	0.0	0.0	0.0	0.0	0.0	DS	0.0	0.0	0.0	DS	0.3	0.0	
Large-billed Crow	<i>Corvus macrorhynchos</i>	N	-	0.0	0.0	0.0	0.4	0.0	0.0	0.2	0.0	0.0	0.0	0.0	0.0	0.0	0.0	0.0	0.0	0.0	0.0	0.0	0.0	0.0	0.0	0.0	0.0	0.0	
Collared Crow	<i>Corvus torquatus</i>	N	LC, NT	0.0	0.0	0.0	0.2	0.3	0.0	0.0	0.5	0.0	0.3	0.0	0.8	0.8	0.8	0.5	0.0	0.0	0.0	0.0	0.0	0.0	0.8	0.0	0.0	0.0	

Note: Conservation Status follows that of Fellows et. al. (2002)

^ Pintail Snipe and Swinhoe's Snipe cannot be distinguished in field, conservation status refers to Swinhoe's Snipe.

V Indicates the species is recorded outside regular surveys.

DS Indicates species recorded during survey.

# Greater Coucal is listed as vulnerable (VU) in China Red Data Book and it is protected terrestrial wildlife state protection (category II).

\* Red-billed Starling is considered by Fellows *et al* (2002) to be of Global Concern. Since publication, however, the global population estimate has been revised and the species is not now considered globally threatened. A listing of Regional Concern (RC) based on the importance of the large roosts present near Deep Bay, is considered to be more appropriate. (Wetland Restoration Plan, Mott, 2008). Red-billed Starling is now listed as Least Concern by IUCN. (IUCN, 2016)

**Table B5: Summary of Bird Species Recorded at the WRA and their Respective Monthly Mean between November 2012 and October 2014**

Common name	Scientific name	Wetland Dependence	Conservation status	Nov- 12	Dec- 12	Jan- 13	Feb- 13	Mar- 13	Apr- 13	May- 13	Jun- 13	Jul- 13	Aug- 13	Sep- 13	Oct- 13	Nov- 13	Dec- 13	Jan- 14	Feb- 14	Mar- 14	Apr- 14	May- 14	Jun- 14	Jul- 14	Aug- 14	Sep- 14	Oct- 14
Little Grebe	<i>Tachybaptus ruficollis</i>	Y	LC	1.0	1.0	1.2	0.4	0.6	0.4	1.5	0.5	0.0	0.6	0.5	1.2	0.6	2.2	1.8	5.3	4.5	2.4	0.8	2.0	3.2	1.8	1.6	1.4
Great Cormorant	<i>Phalacrocorax carbo</i>	Y	PRC	0.8	3.2	0.8	1.0	0.0	0.0	0.0	0.0	0.0	0.0	0.0	0.2	V	0.4	0.6	0.5	0.0	0.0	0.0	0.0	0.0	0.0	0.0	V
Grey Heron	<i>Ardea cinerea</i>	Y	PRC	0.8	1.4	0.8	1.4	0.0	0.0	0.0	0.0	0.0	0.0	V	1.0	2.8	2.6	1.6	2.5	0.0	0.0	0.0	0.0	0.0	0.0	1.0	1.6
Purple Heron	<i>Ardea purpurea</i>	Y	RC	0.0	0.0	0.0	0.0	0.0	0.0	0.0	0.0	0.0	0.0	0.0	0.0	0.0	0.0	0.0	0.0	0.0	0.0	0.0	0.0	0.0	0.0	0.0	0.0
Great Egret	<i>Ardea alba</i>	Y	PRC, (RC)	1.4	0.6	1.0	0.8	0.2	0.6	0.0	0.8	0.6	0.0	0.0	0.6	0.6	2.4	1.2	1.8	0.8	0.2	V	0.5	V	V	0.2	V
Intermediate Egret	<i>Egretta intermedia</i>	Y	RC	0.2	0.0	0.0	0.0	0.0	0.0	0.0	0.0	0.0	0.0	0.0	0.0	0.0	0.0	0.0	V	0.0	0.0	0.0	0.0	0.0	0.0	0.0	V
Little Egret	<i>Egretta garzetta</i>	Y	PRC, (RC)	0.8	2.0	2.2	1.4	0.6	1.2	0.6	1.8	0.4	3.4	0.5	2.2	1.4	2.4	4.4	4.0	3.8	3.2	1.2	3.3	1.8	1.3	2.6	1.6
Eastern Cattle Egret	<i>Bubulcus coromandus</i>	Y	(LC)	0.0	0.0	0.0	0.0	0.0	0.0	0.0	0.0	0.0	0.0	0.0	0.0	0.0	0.0	0.0	0.0	1.6	V	0.0	0.0	0.0	0.0	0.0	
Chinese Pond Heron	<i>Ardeola bacchus</i>	Y	PRC, (RC)	1.6	2.2	2.4	0.4	0.0	0.0	0.0	0.0	0.8	2.0	0.5	1.4	1.4	2.6	6.8	3.5	2.5	1.0	1.6	1.0	1.4	1.5	4.2	1.4
Yellow Bittern	<i>Ixobrychus sinensis</i>	Y	(LC)	0.0	0.0	0.0	0.0	0.0	V	1.0	2.5	0.2	1.4	1.3	0.8	0.4	0.2	0.0	0.0	V	V	0.4	1.3	1.0	0.8	0.2	0.2
Cinnamon Bittern	<i>Ixobrychus cinnamomeus</i>	Y	LC	0.0	0.0	0.0	0.0	0.0	0.0	0.0	0.0	0.0	0.0	0.0	0.0	0.0	0.0	0.0	0.0	0.0	0.0	0.0	0.0	0.0	0.0	0.0	
Black-crowned Night Heron	<i>Nycticorax nycticorax</i>	Y	(LC)	V	0.0	0.0	0.2	0.0	0.0	0.0	0.3	0.0	0.0	0.0	V	0.0	0.0	0.0	0.0	V	0.0	V	0.0	0.0	0.0	0.0	V
Eurasian Spoonbill	<i>Platalea leucorodia</i>	Y	LC	0.0	0.0	0.0	0.0	0.0	0.0	0.0	0.0	0.0	0.0	0.0	0.0	0.0	0.0	0.0	0.0	0.0	0.0	0.0	0.0	0.0	0.0	0.0	
Black-faced Spoonbill	<i>Platalea minor</i>	Y	PGC, EN	0.0	0.0	0.0	0.0	0.0	0.0	0.0	0.0	0.0	0.0	0.0	0.0	0.0	0.0	0.0	V	V	0.0	0.0	0.0	0.0	0.0	0.0	
Mandarin Duck	<i>Aix galericulata</i>	Y	-	0.0	0.0	0.0	0.0	0.0	0.0	0.0	0.0	0.0	0.0	0.0	0.0	0.0	0.0	0.0	0.0	0.0	0.0	0.0	0.0	0.0	0.0	0.0	

Common name	Scientific name	Wetland Dependence	Conservation status	Nov- 12	Dec- 12	Jan- 13	Feb- 13	Mar- 13	Apr- 13	May- 13	Jun- 13	Jul- 13	Aug- 13	Sep- 13	Oct- 13	Nov- 13	Dec- 13	Jan- 14	Feb- 14	Mar- 14	Apr- 14	May- 14	Jun- 14	Jul- 14	Aug- 14	Sep- 14	Oct- 14
Eurasian Wigeon	<i>Anas penelope</i>	Y	RC	0.0	0.0	0.0	0.0	0.0	0.0	0.0	0.0	0.0	0.0	0.0	0.0	0.0	0.0	0.0	0.0	0.0	0.0	0.0	0.0	0.0	0.0	0.0	0.0
Eurasian Teal	<i>Anas crecca</i>	Y	RC	0.0	0.0	0.0	0.0	0.0	0.0	0.0	0.0	0.0	0.0	0.0	0.0	0.0	0.0	0.0	0.0	0.0	0.0	0.0	0.0	0.0	0.0	0.0	0.0
Northern Pintail	<i>Anas acuta</i>	Y	RC	0.0	0.0	0.0	0.0	0.0	0.0	0.0	0.0	0.0	0.0	0.0	0.0	0.0	0.0	0.0	0.0	0.0	0.0	0.0	0.0	0.0	0.0	0.0	0.0
Northern Shoveler	<i>Anas clypeata</i>	Y	RC	0.0	0.0	V	0.0	0.0	0.0	0.0	0.0	0.0	0.0	0.0	0.0	0.0	1.2	7.0	5.5	V	0.0	0.0	0.0	0.0	0.0	0.0	0.0
Tufted Duck	<i>Aythya fuligula</i>	Y	LC	0.0	0.0	V	0.0	0.0	0.0	0.0	0.0	0.0	0.0	0.0	0.0	0.0	0.0	0.0	0.0	0.0	0.0	0.0	0.0	0.0	0.0	0.0	0.0
Garganey	<i>Anas querquedula</i>	Y	-	0.0	0.0	0.0	0.0	0.0	0.0	0.0	0.0	0.0	0.0	0.0	0.0	0.0	0.0	0.0	0.0	0.0	0.0	0.0	0.0	0.0	0.0	0.0	0.0
Western Osprey	<i>Pandion haliaetus</i>	Y	RC	0.0	0.0	0.0	0.0	0.0	0.0	0.0	0.0	0.0	0.0	0.0	0.0	0.0	0.0	0.0	0.0	0.0	0.0	0.0	0.0	0.0	0.0	0.0	0.0
Black-winged Kite	<i>Elanus caeruleus</i>	Y	LC	0.0	0.0	0.0	0.0	0.0	0.0	0.0	0.0	0.0	0.0	0.0	0.0	0.0	0.0	0.0	0.0	0.0	0.0	0.0	0.0	0.0	0.0	0.0	0.0
Black Kite	<i>Milvus migrans</i>	N	(RC)	0.0	0.2	0.0	0.0	0.6	0.0	0.2	0.3	0.0	1.2	0.8	0.2	0.2	0.0	V	0.5	0.8	0.4	0.6	0.3	0.6	0.0	0.0	0.4
Crested Serpent Eagle	<i>Spilornis cheela</i>	N	(LC)	0.0	0.0	0.0	0.0	0.0	0.0	0.0	0.0	0.0	0.0	0.0	0.0	0.0	0.0	0.0	V	0.0	0.0	0.0	0.0	0.0	0.0	0.0	0.0
Eastern Buzzard	<i>Buteo japonicus</i>	N	-	0.0	0.0	0.0	0.0	0.0	0.0	0.0	0.0	0.0	0.0	0.0	0.0	0.0	0.0	0.0	0.0	0.0	0.0	0.0	0.0	0.0	0.0	0.0	V
Common Kestrel	<i>Falco tinnunculus</i>	N	-	0.0	0.0	0.0	0.0	0.0	0.0	0.0	0.0	0.0	0.0	0.0	0.0	0.0	0.0	0.0	0.0	0.0	0.0	0.0	0.0	0.0	0.0	0.0	0.0
Eurasian Hobby	<i>Falco subbuteo</i>	Y	(LC)	0.0	0.0	0.0	0.0	0.0	0.0	0.0	0.0	0.0	0.0	0.0	0.0	0.0	0.0	0.0	0.0	0.0	0.0	0.0	0.0	0.0	V	0.0	0.0
Peregrine Falcon	<i>Falco peregrinus</i>	N	(LC)	0.0	V	0.0	0.0	0.0	0.0	0.0	0.0	0.0	0.0	0.0	0.0	0.0	V	0.0	0.0	0.0	0.0	0.0	0.0	0.0	0.0	0.0	0.0
Greater Spotted Eagle	<i>Clanga clanga</i>	N	GC	0.0	0.0	0.0	0.0	0.0	0.0	0.0	0.0	0.0	0.0	0.0	0.0	0.0	0.0	0.0	0.0	0.0	0.0	0.0	0.0	0.0	0.0	0.0	0.0
Imperial Eagle	<i>Aquila heliaca</i>	N	-	0.0	0.0	V	0.0	0.0	0.0	0.0	0.0	0.0	0.0	0.0	0.0	0.0	0.0	0.0	0.0	0.0	0.0	0.0	0.0	0.0	0.0	0.0	0.0
Japanese Quail	<i>Coturnix japonica</i>	Y	LC	0.0	0.0	0.0	0.0	0.0	0.0	0.0	0.0	0.0	0.0	0.0	V	0.0	0.0	0.0	0.0	0.0	0.0	0.0	0.0	0.0	0.0	0.0	0.0
Baillon's Crake	<i>Porzana pusilla</i>	Y	LC	0.0	0.0	0.0	0.0	0.0	0.0	0.0	0.0	0.0	0.0	0.0	0.0	0.0	0.0	0.0	0.0	0.0	0.0	0.0	0.0	0.0	0.0	0.0	0.0

Common name	Scientific name	Wetland Dependence	Conservation status	Nov- 12	Dec- 12	Jan- 13	Feb- 13	Mar- 13	Apr- 13	May- 13	Jun- 13	Jul- 13	Aug- 13	Sep- 13	Oct- 13	Nov- 13	Dec- 13	Jan- 14	Feb- 14	Mar- 14	Apr- 14	May- 14	Jun- 14	Jul- 14	Aug- 14	Sep- 14	Oct- 14
White-breasted Waterhen	<i>Amauornis phoenicurus</i>	Y	-	0.2	0.0	0.2	0.0	0.4	0.2	V	1.8	0.2	0.2	V	0.8	0.4	0.0	0.0	0.0	V	0.2	0.2	V	1.4	0.5	0.5	0.2
Watercock	<i>Gallicrex cinerea</i>	Y	RC	0.0	0.0	0.0	0.0	0.0	0.0	0.0	0.0	0.0	0.0	0.0	0.0	0.0	0.0	0.0	0.0	0.0	0.0	0.0	0.0	0.0	0.0	0.0	0.0
Common Moorhen	<i>Gallinula chloropus</i>	Y	-	0.0	0.0	0.0	0.0	0.0	0.0	0.0	0.0	0.0	0.0	0.0	0.0	0.0	0.0	0.0	0.0	V	0.2	0.0	0.0	0.0	0.0	0.0	0.0
Pheasant-tailed Jacana	<i>Hydrophasianus chirurgus</i>	Y	LC	0.0	0.0	0.0	0.0	0.0	0.0	0.0	0.0	0.0	0.0	0.0	0.0	0.0	0.0	0.0	0.0	0.0	0.0	0.0	0.0	0.0	0.0	0.0	0.0
Greater Painted-snipe	<i>Rostratula benghalensis</i>	Y	LC	0.2	0.0	0.0	0.0	0.0	0.0	0.0	0.0	0.0	0.0	0.0	0.0	0.0	0.0	0.0	0.0	0.0	0.0	0.0	0.0	0.0	0.0	0.0	0.0
Black-winged Stilt	<i>Himantopus himantopus</i>	Y	RC	0.0	0.0	0.0	0.0	0.0	0.0	0.0	0.0	0.2	0.6	V	0.2	V	0.0	0.0	0.0	0.0	0.0	0.0	0.0	0.0	0.0	V	V
Pied Avocet	<i>Recurvirostra avosetta</i>	Y	RC	0.0	0.2	0.0	0.0	0.0	0.0	0.0	0.0	0.0	0.0	0.0	0.0	0.0	0.0	0.0	0.0	0.0	0.0	0.0	0.0	0.0	0.0	0.0	0.0
Oriental Pratincole	<i>Glareola maldivarum</i>	Y	LC	0.0	0.0	0.0	0.0	0.0	0.0	0.0	0.0	0.0	0.0	0.0	0.0	0.0	0.0	0.0	0.0	0.0	0.0	0.0	0.0	0.0	0.0	0.0	0.0
Little Ringed Plover	<i>Charadrius dubius</i>	Y	(LC)	0.0	0.0	0.4	1.0	0.2	0.0	0.0	0.0	0.0	0.0	0.0	V	0.4	0.0	V	0.5	0.8	0.0	0.0	0.3	0.0	0.0	0.0	1.2
Kentish Plover	<i>Charadrius alexandrinus</i>	Y	RC	0.0	0.0	0.0	0.0	0.0	0.0	0.0	0.0	0.8	0.0	0.0	0.0	V	0.0	0.0	0.0	0.0	0.0	0.0	0.0	0.0	0.0	0.0	0.0
Spotted Redshank	<i>Tringa erythropus</i>	Y	RC	0.0	0.0	0.0	0.0	0.0	0.0	0.0	0.0	0.0	0.0	0.0	V	0.0	0.0	0.0	0.0	0.0	0.0	0.0	0.0	0.0	0.0	0.0	0.0
Common Redshank	<i>Tringa totanus</i>	Y	RC	0.0	0.0	0.0	0.0	0.0	0.0	0.0	0.0	0.0	0.0	0.0	0.0	0.0	0.0	0.0	0.0	0.0	0.0	0.0	0.0	0.0	0.0	0.0	0.0
Marsh Sandpiper	<i>Tringa stagnatilis</i>	Y	RC	0.0	0.0	0.0	0.0	0.0	0.0	0.0	0.0	0.0	0.0	0.0	0.0	0.0	0.0	0.0	0.0	0.0	0.0	0.0	0.0	0.0	0.0	0.0	0.0
Common Greenshank	<i>Tringa nebularia</i>	Y	RC	V	V	V	0.0	V	0.0	0.0	0.0	0.0	0.0	0.0	0.0	0.0	V	V	0.0	V	0.0	0.0	0.0	0.0	0.0	0.0	V
Green Sandpiper	<i>Tringa ochropus</i>	Y	-	0.0	0.0	0.0	0.0	0.0	0.2	0.0	0.0	0.0	0.0	0.0	1.0	0.6	V	0.0	0.0	0.5	0.0	0.0	0.0	0.0	V	0.0	V
Wood Sandpiper	<i>Tringa glareola</i>	Y	LC	0.0	V	0.0	V	V	0.0	0.0	0.0	0.0	0.0	0.0	V	V	V	V	V	V	0.0	0.0	0.0	0.4	0.3	0.0	0.2
Common Sandpiper	<i>Actitis hypoleucos</i>	Y	-	0.2	0.0	0.0	0.0	0.0	0.2	0.2	0.0	V	0.6	V	0.8	1.6	0.2	V	0.3	1.3	0.2	0.4	V	V	0.3	2.6	4.4



Common name	Scientific name	Wetland Dependence	Conservation status	Nov- 12	Dec- 12	Jan- 13	Feb- 13	Mar- 13	Apr- 13	May- 13	Jun- 13	Jul- 13	Aug- 13	Sep- 13	Oct- 13	Nov- 13	Dec- 13	Jan- 14	Feb- 14	Mar- 14	Apr- 14	May- 14	Jun- 14	Jul- 14	Aug- 14	Sep- 14	Oct- 14
Eurasian Woodcock	<i>Scolopax rusticola</i>	Y	-	0.0	0.0	0.0	0.0	0.0	0.0	0.0	0.0	0.0	0.0	0.0	0.0	0.0	0.0	0.0	0.0	0.0	0.0	0.0	0.0	0.0	0.0	0.0	0.0
Pintail/Swinhoe's Snipe^	<i>Gallinago stenura/ G. megala</i>	Y	LC^	0.0	0.0	0.0	0.0	0.0	0.0	0.0	0.0	0.0	0.0	0.0	0.0	V	0.0	0.0	0.0	0.0	0.0	0.0	0.0	0.0	0.0	0.0	0.0
Common Snipe	<i>Gallinago gallinago</i>	Y	-	0.0	V	0.0	0.0	0.0	V	0.0	0.0	0.0	0.0	0.0	0.0	0.0	0.0	0.0	0.0	0.0	0.0	0.0	0.0	0.0	0.0	0.0	0.0
Red-necked Stint	<i>Calidris ruficollis</i>	Y	LC	0.0	0.0	0.0	0.0	0.0	0.0	0.0	0.0	0.0	0.0	0.0	0.0	0.0	0.0	0.0	0.0	0.0	0.0	0.0	0.0	0.0	0.0	0.0	0.0
Temminck's Stint	<i>Calidris temminckii</i>	Y	LC	0.0	0.0	0.0	0.0	0.0	0.0	0.0	0.0	0.0	0.0	0.0	0.0	0.0	0.0	0.0	0.0	0.0	0.0	0.0	0.0	0.0	0.0	0.0	0.6
Long-toed Stint	<i>Calidris subminuta</i>	Y	LC	0.0	0.0	0.0	0.0	0.0	0.0	0.0	0.0	0.0	0.0	0.0	0.0	0.0	0.0	0.0	0.0	0.0	0.0	0.0	0.0	0.0	0.0	0.0	0.0
Whiskered Tern	<i>Chlidonias hybrida</i>	Y	-	0.0	0.0	0.0	0.0	0.0	0.0	0.0	0.0	0.0	0.0	0.0	0.0	0.0	0.0	0.0	0.0	0.0	0.0	0.0	0.0	0.0	0.0	0.0	0.0
Domestic Pigeon	<i>Columba livia</i>	N	-	0.0	0.0	0.0	0.0	0.0	0.0	0.0	0.0	0.0	0.0	0.0	0.0	0.0	0.0	0.0	0.0	0.0	0.0	0.0	0.0	0.0	0.0	0.0	0.0
Eurasian Collared Dove	<i>Streptopelia decaocto</i>	N	-	0.0	0.0	0.0	0.0	0.0	0.0	0.0	0.0	0.0	0.0	0.0	0.0	0.0	0.0	0.0	0.0	0.0	0.0	0.0	0.0	0.0	0.0	0.0	V
Oriental Turtle Dove	<i>Streptopelia orientalis</i>	N	-	0.0	0.0	0.0	0.0	0.0	0.0	0.0	0.0	0.0	0.0	0.0	0.0	0.0	0.0	0.0	0.0	0.0	0.0	0.0	0.0	0.0	0.0	0.0	0.0
Red Turtle Dove	<i>Streptopelia tranquebarica</i>	N	-	0.0	0.0	0.0	0.0	0.0	0.0	0.0	0.0	0.0	0.0	0.0	0.0	0.0	0.0	0.0	0.0	0.0	0.0	0.0	0.0	0.0	0.0	0.0	0.0
Spotted Dove	<i>Spilopelia chinensis</i>	N	-	0.4	1.2	0.4	0.0	0.2	0.2	0.4	0.5	0.8	2.8	2.0	2.6	2.6	3.0	6.2	2.3	2.0	1.0	0.6	1.6	1.2	1.3	2.2	3.6
Asian Koel	<i>Eudynamis scolopaceus</i>	N	-	0.0	0.0	0.0	0.0	0.0	0.0	0.0	0.0	0.0	0.0	0.0	0.0	0.0	0.0	0.0	0.0	0.0	V	0.0	0.0	0.0	0.0	0.0	0.0
Greater Coucal#	<i>Centropus sinensis</i>	N	-	0.0	0.0	0.0	0.0	0.0	0.0	0.2	0.3	0.2	0.2	0.0	0.2	0.2	0.0	0.0	0.0	0.0	0.4	0.8	0.3	0.8	0.5	0.2	0.2
Eurasian Eagle Owl	<i>Bubo bubo</i>	N	RC	0.0	0.0	0.0	0.0	0.0	0.0	0.0	0.0	0.0	0.0	V	0.0	V	0.0	0.0	V	0.0	0.0	0.0	0.0	0.0	0.0	0.0	0.0
Savanna Nightjar	<i>Caprimulgus affinis</i>	N	-	0.0	0.0	0.0	V	0.0	0.0	0.0	V	0.0	0.0	0.0	0.0	0.0	0.0	0.0	0.0	V	0.0	0.0	0.0	0.0	0.0	0.0	0.0
Pacific Swift	<i>Apus pacificus</i>	N	(LC)	0.0	0.0	0.0	0.0	0.0	0.0	0.0	0.0	0.0	0.0	0.0	0.0	0.0	0.0	0.0	0.0	0.0	0.0	0.0	0.0	0.0	0.0	0.0	0.0

Common name	Scientific name	Wetland Dependence	Conservation status	Nov- 12	Dec- 12	Jan- 13	Feb- 13	Mar- 13	Apr- 13	May- 13	Jun- 13	Jul- 13	Aug- 13	Sep- 13	Oct- 13	Nov- 13	Dec- 13	Jan- 14	Feb- 14	Mar- 14	Apr- 14	May- 14	Jun- 14	Jul- 14	Aug- 14	Sep- 14	Oct- 14
House Swift	<i>Apus nipalensis</i>	N	-	0.0	0.4	V	0.0	0.0	0.0	0.0	0.0	0.0	0.0	0.0	0.0	0.0	0.0	V	0.5	0.0	0.0	0.0	0.0	0.0	0.0	0.0	0.0
Pied Kingfisher	<i>Ceryle rudis</i>	Y	(LC)	0.0	0.0	0.0	0.0	0.0	V	0.0	0.0	0.0	V	0.0	0.0	0.0	0.4	V	0.3	V	0.0	0.0	0.0	V	0.0	0.0	0.0
Common Kingfisher	<i>Alcedo atthis</i>	Y	-	0.2	0.2	0.5	0.4	0.2	0.2	0.6	0.3	0.4	0.4	0.8	1.0	2.0	1.6	1.2	2.3	0.8	1.0	0.0	0.0	V	0.0	0.0	0.0
White-throated Kingfisher	<i>Halcyon smyrnensis</i>	N	(LC)	0.0	0.0	0.0	0.0	0.0	0.0	0.0	0.0	0.0	0.0	0.0	0.0	V	0.2	0.0	0.0	0.0	0.0	1.2	1.8	0.6	1.3	1.4	1.8
Eurasian Hoopoe	<i>Upupa epops</i>	N	-	0.0	0.0	0.0	0.0	0.0	0.0	0.0	0.0	0.0	0.0	0.0	0.0	0.0	0.0	0.0	0.0	0.0	0.0	0.0	0.0	0.0	0.0	0.0	0.0
Barn Swallow	<i>Hirundo rustica</i>	N	-	0.2	1.0	0.0	0.2	9.2	23.0	11.2	0.0	1.4	1.8	1.0	0.0	V	0.0	0.0	0.5	7.8	15.4	18.0	1.5	1.0	1.5	0.4	V
Red-rumped Swallow	<i>Hirundo daurica</i>	N	-	1.2	1.2	0.0	0.0	0.0	0.0	0.0	0.0	0.0	0.0	0.0	0.0	0.0	0.0	0.6	0.0	0.0	0.0	0.0	0.0	0.0	0.0	0.0	0.0
Eastern Yellow Wagtail	<i>Motacilla tschutschensis</i>	Y	-	0.2	0.2	1.4	2.8	2.2	2.2	0.2	0.0	0.0	0.0	0.0	0.4	0.2	0.6	0.6	1.0	0.3	0.2	0.0	0.0	0.0	0.0	0.6	0.2
Eurasian Hoopoe	<i>Upupa epops</i>	N	-	0.0	0.0	0.0	0.0	0.0	0.0	0.0	0.0	0.0	0.0	0.0	0.0	0.0	0.0	0.0	0.0	0.0	0.0	0.0	0.0	0.0	0.0	0.0	0.0
Grey Wagtail	<i>Motacilla cinerea</i>	Y	-	0.6	0.0	0.0	0.0	0.0	0.0	0.0	0.0	0.0	0.0	0.0	0.0	0.0	0.0	0.0	0.0	0.0	0.0	0.0	0.0	0.0	0.0	0.0	0.0
White Wagtail	<i>Motacilla alba</i>	Y	-	2.6	1.0	1.0	3.0	4.8	2.0	1.0	0.0	1.2	0.4	3.5	2.8	3.6	2.6	1.2	1.3	2.5	1.6	0.6	1.2	0.8	1.8	1.8	3.2
Richard's Pipit	<i>Anthus richardi</i>	Y	-	0.2	0.4	1.2	0.4	0.4	0.0	0.0	0.0	0.0	0.0	0.0	0.0	0.0	0.4	0.8	2.0	2.3	3.0	V	0.0	0.0	0.0	0.0	V
Olive-backed Pipit	<i>Anthus hodgsoni</i>	N	-	0.0	0.0	0.0	0.6	1.2	1.4	0.0	0.0	0.0	0.0	0.0	0.0	0.0	0.0	0.0	0.0	0.0	0.2	0.0	0.0	0.0	0.0	0.0	0.0
Red-throated Pipit	<i>Anthus cervinus</i>	N	LC	0.0	0.0	0.0	0.0	0.0	0.0	0.0	0.0	0.0	0.0	0.0	0.0	0.0	0.0	0.0	0.0	0.0	0.0	0.0	0.0	0.0	0.0	0.0	0.0
Buff-bellied Pipit	<i>Anthus rubescens</i>	N	LC	0.0	0.0	0.0	0.0	0.0	0.0	0.0	0.0	0.0	0.0	0.0	0.0	0.0	0.0	0.0	0.0	0.0	0.0	0.0	0.0	0.0	0.0	0.0	0.0
Red-whiskered Bulbul	<i>Pycnonotus jocosus</i>	N	-	0.0	0.0	0.0	0.0	0.0	0.2	0.0	0.3	0.0	0.2	0.0	0.0	V	0.0	0.8	1.3	0.3	0.2	0.0	0.0	0.2	0.3	1.2	0.0
Chinese Bulbul	<i>Pycnonotus sinensis</i>	N	-	0.0	0.2	2.0	0.2	0.2	3.2	2.0	3.8	0.0	2.4	3.5	0.2	1.8	4.0	3.8	0.5	0.8	1.6	1.8	2.3	2.2	2.3	0.4	4.6

Common name	Scientific name	Wetland Dependence	Conservation status	Nov- 12	Dec- 12	Jan- 13	Feb- 13	Mar- 13	Apr- 13	May- 13	Jun- 13	Jul- 13	Aug- 13	Sep- 13	Oct- 13	Nov- 13	Dec- 13	Jan- 14	Feb- 14	Mar- 14	Apr- 14	May- 14	Jun- 14	Jul- 14	Aug- 14	Sep- 14	Oct- 14
Bull-headed Shrike	<i>Lanius bucephalus</i>	N	-	0.0	0.0	0.0	0.0	0.0	0.0	0.0	0.0	0.0	0.0	0.0	0.0	0.0	0.0	0.0	0.0	0.0	0.0	0.0	0.0	0.0	0.0	0.0	V
Brown Shrike	<i>Lanius cristatus</i>	N	-	0.0	0.0	0.0	0.0	0.0	0.0	0.0	0.0	0.0	0.0	0.0	0.0	0.0	0.0	0.0	0.0	0.0	0.0	0.0	0.0	0.0	0.0	0.0	0.0
Long-tailed Shrike	<i>Lanius schach</i>	N	-	0.2	0.0	0.4	0.0	0.0	0.2	0.0	V	0.4	0.2	0.3	0.2	0.0	0.2	V	0.3	0.0	0.0	0.2	0.3	0.4	0.5	V	0.0
Oriental Magpie Robin	<i>Copsychus saularis</i>	N	-	0.0	0.2	0.0	0.0	0.0	0.0	0.2	0.5	0.0	0.2	0.3	V	0.2	0.2	0.4	0.0	0.0	0.2	0.0	0.3	V	V	V	0.0
Daurian Redstart	<i>Phoenicurus auroreus</i>	N	-	0.0	0.0	0.2	0.0	0.0	0.0	0.0	0.0	0.0	0.0	0.0	0.0	0.2	0.2	0.4	0.0	0.0	0.0	0.0	0.0	0.0	0.0	0.0	V
Stejneger's Stonechat	<i>Saxicola stejnegeri</i>	N	-	0.4	0.4	0.8	0.0	0.0	0.6	0.0	0.0	0.0	0.0	0.0	V	0.2	0.2	0.4	0.5	0.3	V	0.2	0.0	0.0	0.0	0.0	0.4
Masked Laughingthrush	<i>Garrulax perspicillatus</i>	N	-	0.0	0.0	0.0	0.0	0.6	1.2	0.0	0.0	0.0	0.0	1.0	0.0	0.0	0.4	0.8	V	0.5	0.2	0.2	0.5	V	1.5	0.8	0.0
Lanceolated Warbler	<i>Locustella lanceolata</i>	Y	-	0.0	0.0	0.0	0.0	0.0	0.0	0.0	0.0	0.0	0.0	0.0	0.0	0.0	0.0	0.0	0.0	0.0	0.0	0.0	0.0	0.0	0.0	0.0	0.0
Pallas's Grasshopper Warbler	<i>Locustella certhiola</i>	Y	LC	0.0	0.0	0.0	0.0	0.0	0.0	0.0	0.0	0.0	0.0	0.0	0.0	0.0	0.0	0.0	0.0	0.0	0.0	0.0	0.0	0.0	0.0	0.0	0.0
Oriental Reed Warbler	<i>Acrocephalus orientalis</i>	Y	-	0.0	0.0	0.0	0.0	0.0	0.0	0.0	0.0	0.0	0.0	0.0	0.0	0.0	0.0	0.0	0.0	0.0	0.0	0.0	0.0	0.0	0.0	V	0.0
Thick-billed Warbler	<i>Acrocephalus aedon</i>	Y	LC	0.0	0.0	0.0	0.0	0.0	0.0	0.0	0.0	0.0	0.0	0.0	0.0	0.0	0.0	0.0	0.0	0.0	0.0	0.0	0.0	0.0	0.0	0.0	0.0
Black-browed Reed Warbler	<i>Acrocephalus bistrigiceps</i>	Y	-	0.2	0.0	0.0	0.0	0.0	0.0	0.0	0.0	0.0	0.0	0.0	0.0	0.0	0.0	0.0	0.0	0.0	0.0	0.0	0.0	0.0	0.0	0.0	0.0
Common Tailorbird	<i>Orthotomus sutorius</i>	N	-	0.0	0.0	0.0	0.0	0.0	0.0	0.0	0.0	0.0	0.0	0.0	0.0	0.0	0.0	0.0	0.0	0.0	0.0	0.0	0.0	0.0	0.0	0.0	0.2
Zitting Cisticola	<i>Cisticola juncidis</i>	Y	LC	0.0	0.2	0.0	0.0	V	0.0	0.0	0.0	0.0	0.0	0.0	0.0	0.0	0.0	0.4	0.0	0.3	0.2	0.0	0.0	0.0	0.0	0.0	0.0
Yellow-bellied Prinia	<i>Prinia flaviventris</i>	N	-	0.0	0.8	0.6	0.8	1.4	4.6	4.4	5.0	2.4	1.8	3.0	2.4	0.8	1.0	0.8	1.3	2.8	0.8	0.8	0.4	0.0	0.0	0.4	0.0
Plain Prinia	<i>Prinia inornata</i>	N	-	1.2	0.4	V	1.4	0.2	0.2	0.2	0.5	0.8	0.4	0.3	0.0	0.4	0.0	0.2	V	0.8	2.0	1.0	0.0	2.6	4.3	3.4	0.0
Dusky Warbler	<i>Phylloscopus fuscatus</i>	N	-	0.0	0.0	0.0	0.0	0.0	0.0	0.0	0.0	0.0	0.0	0.0	V	0.4	0.0	0.4	0.8	1.5	V	0.0	0.0	0.0	0.0	V	V

Common name	Scientific name	Wetland Dependence	Conservation status	Nov- 12	Dec- 12	Jan- 13	Feb- 13	Mar- 13	Apr- 13	May- 13	Jun- 13	Jul- 13	Aug- 13	Sep- 13	Oct- 13	Nov- 13	Dec- 13	Jan- 14	Feb- 14	Mar- 14	Apr- 14	May- 14	Jun- 14	Jul- 14	Aug- 14	Sep- 14	Oct- 14
Pallas's Leaf Warbler	<i>Phylloscopus proregulus</i>	N		0.0	0.0	0.0	0.0	0.0	0.0	0.0	0.0	0.0	0.0	0.0	0.0	0.0	0.0	0.0	0.0	0.0	0.0	0.0	0.0	0.0	0.0	0.0	0.0
Yellow-browed warbler	<i>Phylloscopus inornatus</i>	N	-	0.8	0.6	0.0	0.0	0.0	0.0	0.0	0.0	0.0	0.0	0.0	0.0	0.0	0.0	0.0	0.0	0.0	0.0	0.0	0.0	0.8	0.5	0.0	V
Chinese Penduline-Tit	<i>Remiz consobrinus</i>	Y	RC	0.0	0.0	0.0	0.0	0.0	0.0	0.0	0.0	0.0	0.0	0.0	0.0	0.0	V	0.0	4.5	V	0.0	0.0	0.0	0.0	0.0	0.0	0.0
Japanese White-eye	<i>Zosterops japonica</i>	N	-	0.0	0.0	0.0	0.0	0.0	0.0	0.0	0.0	0.0	0.0	0.0	0.0	0.0	0.0	0.2	0.0	0.0	0.6	0.0	0.0	V	0.0	0.0	0.0
Little Bunting	<i>Emberiza pusilla</i>	N	-	0.0	0.0	0.0	0.0	0.0	0.0	0.0	0.0	0.0	0.0	0.0	0.0	0.0	0.0	0.0	0.0	0.0	0.0	0.0	0.0	0.0	0.0	0.0	0.0
Black-faced Bunting	<i>Emberiza spodocephala</i>	N	-	0.0	0.0	0.0	0.0	0.0	0.0	0.0	0.0	0.0	0.0	0.0	0.0	0.0	0.0	0.0	0.0	V	0.0	0.0	0.0	0.0	0.0	0.0	0.0
Chinese Grosbeak	<i>Eophona migratoria</i>	N	LC	0.0	0.0	0.0	0.0	0.0	0.0	0.0	0.0	0.0	0.0	0.0	0.0	0.0	0.0	0.0	0.0	0.0	0.0	0.0	0.0	0.0	0.0	0.0	0.0
Scaly-breasted Munia	<i>Lonchura punctulata</i>	N	-	0.0	0.0	0.0	1.0	2.2	1.0	0.0	0.0	2.0	0.4	0.3	0.0	0.0	1.8	1.8	V	1.8	V	3.2	5.8	0.8	1.5	1.3	0.0
Eurasian Tree Sparrow	<i>Passer montanus</i>	N	-	0.0	0.0	0.0	0.0	0.0	0.0	0.0	0.0	0.0	0.0	0.0	0.8	V	0.0	0.0	0.0	0.0	0.0	0.0	0.0	0.0	V	8.8	3.6
Red-billed Starling	<i>Spodiopsar sericeus</i>	Y	(RC)*	0.0	0.0	0.0	0.0	0.0	0.0	0.0	0.0	0.0	0.0	0.0	0.0	0.0	0.0	0.0	V	0.0	0.0	V	0.0	0.0	0.0	V	0.0
White-cheeked Starling	<i>Spodiopsar cineraceus</i>	Y	PRC	0.0	0.0	0.0	0.0	0.0	0.0	0.0	0.0	0.0	0.0	0.0	0.0	0.0	0.0	0.0	0.0	0.0	0.0	0.0	0.0	0.0	0.0	0.0	0.0
Black-collared Starling	<i>Gracupica nigricollis</i>	N	-	0.0	0.0	0.8	0.4	0.2	0.2	0.2	0.0	0.0	0.0	0.8	0.0	0.8	1.6	0.8	0.5	1.8	0.2	0.2	V	1.0	1.0	1.2	1.4
White-shouldered Starling	<i>Sturnia sinensis</i>	Y	(LC)	0.0	0.0	0.0	0.0	0.0	0.0	0.0	0.0	0.2	0.0	0.0	0.0	0.0	0.0	0.0	0.0	0.0	0.0	0.0	V	0.0	V	0.0	V
Common Myna	<i>Acridotheres tristis</i>	N	-	0.0	0.0	0.0	0.0	0.0	0.0	0.0	0.0	0.0	0.0	0.0	0.0	0.0	0.0	0.0	0.0	0.0	0.0	0.0	0.0	0.0	V	0.0	0.0
Crested Myna	<i>Acridotheres cristatellus</i>	N	-	0.6	0.0	0.0	0.0	0.0	0.0	0.2	0.3	0.8	0.2	0.0	0.0	2.0	1.8	1.4	0.5	1.3	1.0	0.6	1.0	1.2	3.5	0.2	1.8

Common name	Scientific name	Wetland Dependence	Conservation status	Nov- 12	Dec- 12	Jan- 13	Feb- 13	Mar- 13	Apr- 13	May- 13	Jun- 13	Jul- 13	Aug- 13	Sep- 13	Oct- 13	Nov- 13	Dec- 13	Jan- 14	Feb- 14	Mar- 14	Apr- 14	May- 14	Jun- 14	Jul- 14	Aug- 14	Sep- 14	Oct- 14
Black-naped Oriole	<i>Oriolus chinensis</i>	N	LC	0.0	0.0	0.0	0.0	0.0	0.0	0.0	0.0	0.0	0.0	0.0	0.0	0.0	0.0	0.0	0.0	0.0	0.0	0.0	0.0	0.0	0.0	0.0	0.0
Black Drongo	<i>Dicrurus macrocercus</i>	N	-	0.0	0.0	0.0	0.0	0.0	0.0	0.0	0.0	0.0	0.0	0.3	0.4	V	0.0	0.0	0.0	0.0	V	0.0	0.0	0.0	1.5	0.0	0.2
Azure-winged Magpie	<i>Cyanopica cyanus</i>	N	-	0.0	0.0	0.0	0.0	0.0	0.0	0.0	0.0	0.0	0.0	0.0	0.0	V	0.0	0.0	0.0	0.0	0.0	0.0	0.0	0.0	0.0	0.0	0.0
Eurasian Magpie	<i>Pica pica</i>	N	-	0.0	0.0	0.0	0.0	0.0	0.0	0.0	0.3	0.0	0.0	0.0	0.0	V	0.0	0.8	V	0.3	0.2	0.0	0.0	0.0	0.0	0.0	0.0
Large-billed Crow	<i>Corvus macrorhynchos</i>	N	-	0.0	0.0	0.0	0.0	0.0	0.0	0.0	1.0	0.0	0.0	0.0	0.0	0.0	0.0	0.0	0.0	0.0	0.0	0.0	0.3	0.0	0.0	0.0	0.0
Collared Crow	<i>Corvus torquatus</i>	N	LC, NT	0.0	0.0	0.0	0.0	0.0	V	0.0	0.0	0.0	0.0	0.0	0.2	0.2	0.0	0.0	V	0.5	0.8	0.4	0.0	0.6	0.0	0.4	V

Notes: Conservation Status follows that of Fellows et. al. (2002)

^ Pintail Snip and Swinhoe's Snipe cannot be distinguished in field, conservation status refers to Swinhoe's Snipe.

V Indicates the species is recorded outside regular surveys.

DS Indicates species recorded during survey.

# Greater Coucal is listed as vulnerable (VU) in China Red Data Book and it is protected terrestrial wildlife state protection (category II).

\* Red-billed Starling is considered by Fellows et al (2002) to be of Global Concern. Since publication, however, the global population estimate has been revised and the species is not now considered globally threatened. A listing of Regional Concern (RC) based on the importance of the large roosts present near Deep Bay, is considered to be more appropriate. (Wetland Restoration Plan, Mott, 2008). Red-billed Starling is now listed as Least Concern by IUCN. (IUCN, 2016)

**Table B6: Summary of Bird Species Recorded at the WRA and their Respective Monthly Mean between November 2014 and October 2016**

Common name	Scientific name	Wetland Dependence	Conservation status	Nov- 14	Dec- 14	Jan- 15	Feb- 15	Mar- 15	Apr- 15	May- 15	Jun- 15	Jul- 15	Aug- 15	Sep- 15	Oct- 15	Nov- 15	Dec- 15	Jan- 16	Feb- 16	Mar- 16	Apr- 16	May- 16	Jun- 16	Jul- 16	Aug- 16	Sep- 16	Oct- 16
Little Grebe	<i>Tachybaptus ruficollis</i>	Y	LC	2.5	1.2	2.0	2.0	2.0	0.8	1.2	2.8	1.6	1.8	1.0	2.0	2.3	2.4	3.2	3.3	3.8	2.4	1.4	0.8	1.5	1.4	0.8	V
Great Cormorant	<i>Phalacrocorax carbo</i>	Y	PRC	0.5	1.8	2.0	0.8	0.6	0.0	0.0	0.0	0.0	0.0	0.0	0.2	0.0	0.6	0.2	V	V	0.0	0.0	0.0	0.0	0.0	0.0	0.5
Grey Heron	<i>Ardea cinerea</i>	Y	PRC	2.3	2.6	5.3	4.8	0.8	V	0.0	0.0	0.0	0.0	0.4	1.8	1.3	2.0	1.2	2.0	0.0	0.0	0.0	0.0	0.0	0.0	0.8	0.8
Purple Heron	<i>Ardea purpurea</i>	Y	RC	0.0	0.0	0.0	0.0	0.0	0.0	0.0	0.0	0.0	0.0	0.0	0.2	0.0	0.0	0.0	0.0	0.0	0.0	0.0	0.0	0.0	0.0	0.0	0.0
Great Egret	<i>Ardea alba</i>	Y	PRC, (RC)	0.5	1.6	0.8	0.3	V	0.3	V	0.0	0.2	0.3	1.8	1.0	0.3	0.4	0.8	0.3	0.6	0.2	0.2	0.2	0.3	0.6	1.0	0.8
Intermediate Egret	<i>Egretta intermedia</i>	Y	RC	0.0	0.0	0.0	0.0	0.0	0.0	0.0	0.0	0.0	0.0	V	0.0	0.0	0.0	V	V	0.0	0.0	0.0	0.0	0.0	0.0	0.0	0.0
Little Egret	<i>Egretta garzetta</i>	Y	PRC, (RC)	3.0	3.6	5.3	3.5	4.6	6.3	1.4	0.6	0.2	1.8	2.0	1.8	2.3	4.8	8.2	3.0	1.6	2.6	1.2	2.4	2.8	4.6	3.6	6.3
Eastern Cattle Egret	<i>Bubulcus coromandus</i>	Y	(LC)	0.0	0.0	V	0.0	0.0	0.0	0.0	0.0	0.0	0.0	0.0	0.8	0.0	0.0	0.0	0.0	0.0	V	0.0	V	0.3	0.0	V	V
Chinese Pond Heron	<i>Ardeola bacchus</i>	Y	PRC, (RC)	2.0	2.8	2.3	2.8	1.2	1.8	0.6	0.8	1.8	1.3	2.8	5.4	3.3	8.2	3.6	2.0	1.8	0.6	1.2	1.6	5.3	2.6	5.6	6.3
Yellow Bittern	<i>Ixobrychus sinensis</i>	Y	(LC)	0.3	0.2	0.0	0.0	0.2	0.5	0.4	1.6	0.6	1.0	0.6	2.6	0.3	0.8	0.4	0.5	0.2	0.6	0.6	1.4	4.8	2.0	0.8	0.8
Cinnamon Bittern	<i>Ixobrychus cinnamomeus</i>	Y	LC	0.0	0.0	0.0	0.0	0.0	V	0.0	0.0	0.0	0.0	0.0	0.0	0.0	0.0	0.0	0.0	0.0	0.0	0.0	0.0	0.0	0.0	0.0	0.0
Black-crowned Night Heron	<i>Nycticorax nycticorax</i>	Y	(LC)	0.0	0.0	0.0	0.0	0.0	0.0	0.0	V	V	V	0.0	V	0.0	0.0	0.0	V	0.0	0.0	0.2	V	1.8	0.4	V	0.0
Eurasian Spoonbill	<i>Platalea leucorodia</i>	Y	LC	0.0	0.0	0.0	0.0	0.0	0.0	0.0	0.0	0.0	0.0	0.0	0.0	0.0	0.0	0.0	0.0	0.0	0.0	0.0	0.0	0.0	0.0	0.0	0.0
Black-faced Spoonbill	<i>Platalea minor</i>	Y	PGC, EN	0.0	V	V	0.0	V	0.0	0.0	0.0	0.0	0.0	0.0	0.0	0.0	0.0	0.0	V	0.0	0.0	0.0	0.0	0.0	0.0	0.0	0.0
Mandarin Duck	<i>Aix galericulata</i>	Y	-	0.0	0.0	0.0	0.0	0.0	0.0	0.0	0.0	0.0	0.0	0.0	0.0	0.0	0.0	0.0	0.0	0.0	0.0	0.0	0.0	0.0	0.0	0.0	0.0
Eurasian Wigeon	<i>Anas penelope</i>	Y	RC	0.0	0.0	0.0	0.0	0.0	0.0	0.0	0.0	0.0	0.0	0.0	0.0	0.0	0.0	0.0	0.0	0.0	0.0	0.0	0.0	0.0	0.0	0.0	0.0
Eurasian Teal	<i>Anas crecca</i>	Y	RC	0.0	0.0	0.0	0.0	0.0	0.0	0.0	0.0	0.0	0.0	0.0	0.0	0.0	0.0	0.0	0.0	0.0	0.0	0.0	0.0	0.0	0.0	0.0	0.0
Northern Pintail	<i>Anas acuta</i>	Y	RC	0.0	0.0	0.0	0.0	0.0	0.0	0.0	0.0	0.0	0.0	0.0	0.0	0.0	0.0	0.0	0.0	0.0	0.0	0.0	0.0	0.0	0.0	0.0	0.0

Common name	Scientific name	Wetland Dependence	Conservation status	Nov- 14	Dec- 14	Jan- 15	Feb- 15	Mar- 15	Apr- 15	May- 15	Jun- 15	Jul- 15	Aug- 15	Sep- 15	Oct- 15	Nov- 15	Dec- 15	Jan- 16	Feb- 16	Mar- 16	Apr- 16	May- 16	Jun- 16	Jul- 16	Aug- 16	Sep- 16	Oct- 16
Northern Shoveler	<i>Anas clypeata</i>	Y	RC	0.0	0.2	0.0	0.0	0.0	0.0	0.0	0.0	0.0	0.0	0.0	0.0	0.0	0.0	0.0	1.8	0.2	0.0	0.0	0.0	0.0	0.0	0.0	0.0
Tufted Duck	<i>Aythya fuligula</i>	Y	LC	0.0	0.0	0.0	0.0	0.0	0.0	0.0	0.0	0.0	0.0	0.0	0.0	0.0	0.0	0.0	0.0	0.0	0.0	0.0	0.0	0.0	0.0	0.0	0.0
Garganey	<i>Anas querquedula</i>	Y	-	0.0	0.0	0.0	0.0	0.0	0.0	0.0	0.0	0.0	0.0	0.0	0.0	0.0	0.0	0.0	0.0	0.0	0.0	0.0	0.0	0.0	0.0	0.0	0.0
Western Osprey	<i>Pandion haliaetus</i>	Y	RC	0.0	0.0	0.0	0.0	0.0	0.0	0.0	0.0	0.0	0.0	0.0	0.0	0.0	0.4	0.0	0.0	0.0	0.0	0.0	0.0	0.0	0.0	0.0	0.0
Black-winged Kite	<i>Elanus caeruleus</i>	Y	LC	0.0	0.0	0.0	0.0	0.0	0.0	0.0	0.0	0.0	0.0	V	0.0	0.0	0.0	0.0	0.0	0.0	0.0	0.0	0.0	0.0	0.0	0.0	0.0
Black Kite	<i>Milvus migrans</i>	Y	(RC)	0.0	0.4	0.0	0.3	0.4	0.5	0.2	0.2	0.0	0.0	0.2	0.4	0.3	0.8	0.2	0.5	1.0	0.2	V	0.2	V	0.4	0.0	0.0
Crested Serpent Eagle	<i>Spilornis cheela</i>	N	(LC)	0.0	0.0	0.0	0.0	0.0	0.0	0.4	0.0	0.0	0.0	0.0	0.0	0.0	0.0	0.0	0.0	0.6	0.0	0.0	0.0	0.0	0.0	0.0	0.0
Crested Goshawk	<i>Accipiter trivirgatus</i>	N	-	0.0	0.0	0.0	0.0	0.0	0.0	0.0	0.0	0.0	0.0	0.0	0.0	0.0	0.0	0.0	0.0	0.0	0.0	0.0	0.0	0.0	0.0	0.0	V
Greater Spotted Eagle	<i>Clanga clanga</i>	Y	GC	0.0	0.0	0.3	0.0	0.0	0.0	0.0	0.0	0.0	0.0	0.0	0.0	0.3	0.0	0.0	0.0	0.0	0.0	0.0	0.0	0.0	0.0	0.0	0.0
Eastern Imperial Eagle	<i>Aquila heliaca</i>	Y	-	0.0	0.0	0.0	0.3	0.0	0.0	0.0	0.0	0.0	0.0	0.0	0.0	0.0	0.0	0.0	0.0	0.0	0.0	0.0	0.0	0.0	0.0	0.0	0.0
Eastern Buzzard	<i>Buteo japonicus</i>	Y	-	0.0	0.0	0.0	V	0.2	0.0	0.0	0.0	0.0	0.0	0.0	0.2	0.3	0.0	0.0	0.0	0.0	0.0	0.0	0.0	0.0	0.0	0.0	0.0
Common Kestrel	<i>Falco tinnunculus</i>	N	-	0.0	0.0	0.0	0.0	0.0	0.0	0.0	0.0	0.0	0.0	0.0	V	0.3	0.0	0.0	0.0	0.0	0.0	0.0	0.0	0.0	0.0	0.0	0.0
Peregrine Falcon	<i>Falco peregrinus</i>	Y	(LC)	0.0	0.0	0.0	0.0	0.0	0.0	0.0	0.0	V	0.0	0.0	0.0	0.0	V	0.0	0.0	0.0	0.0	0.0	0.0	0.0	0.0	0.0	0.0
Eurasian Hobby	<i>Falco subbuteo</i>	Y	(LC)	0.0	0.0	0.0	0.0	0.0	0.0	0.0	0.0	0.0	0.0	0.0	0.0	0.3	0.0	0.0	0.0	0.0	0.0	0.0	0.0	0.0	0.0	0.0	V
Japanese Quail	<i>Coturnix japonica</i>	N	LC	0.0	0.0	0.0	0.0	0.0	0.0	0.0	0.0	0.0	0.0	0.0	0.0	0.0	0.0	0.0	0.0	0.0	0.0	0.0	0.0	0.0	0.0	0.0	0.0
Baillon's Crane	<i>Porzana pusilla</i>	Y	LC	0.0	0.0	0.0	0.0	0.0	0.0	0.0	0.0	0.0	0.0	0.0	0.2	0.0	0.0	0.0	0.0	0.0	0.0	0.0	0.0	0.0	0.0	0.0	0.0
White-breasted Waterhen	<i>Amauornis phoenicurus</i>	Y	-	0.5	V	0.8	1.0	0.8	0.3	V	V	0.2	V	0.2	0.6	0.0	0.8	0.4	V	0.4	0.4	0.8	0.2	0.3	0.4	0.6	0.3

Common name	Scientific name	Wetland Dependence	Conservation status	Nov- 14	Dec- 14	Jan- 15	Feb- 15	Mar- 15	Apr- 15	May- 15	Jun- 15	Jul- 15	Aug- 15	Sep- 15	Oct- 15	Nov- 15	Dec- 15	Jan- 16	Feb- 16	Mar- 16	Apr- 16	May- 16	Jun- 16	Jul- 16	Aug- 16	Sep- 16	Oct- 16
Watercock	<i>Gallicrex cinerea</i>	Y	RC	0.0	0.0	0.0	0.0	0.0	0.0	0.0	0.2	0.0	0.0	0.0	0.0	0.0	0.0	0.0	0.0	0.0	0.0	0.0	0.0	0.0	0.0	0.0	0.0
Common Moorhen	<i>Gallinula chloropus</i>	Y	-	V	0.0	V	0.0	0.2	0.0	0.0	0.0	0.0	0.0	0.0	V	0.0	0.0	0.0	V	0.0	0.2	0.0	V	0.0	V	0.0	0.0
Pheasant-tailed Jacana	<i>Hydrophasianus chirurgus</i>	Y	LC	0.0	0.0	0.0	0.0	0.0	0.0	0.0	0.0	0.0	0.0	0.0	0.2	V	0.0	0.0	0.0	0.0	0.0	0.0	0.0	0.0	0.0	0.0	0.0
Greater Painted-snipe	<i>Rostratula benghalensis</i>	Y	LC	0.0	0.0	0.0	0.0	0.0	0.0	0.0	0.0	0.0	0.0	0.0	0.0	0.0	0.0	0.0	0.0	0.0	0.0	0.0	0.0	0.0	0.0	0.0	0.0
Black-winged Stilt	<i>Himantopus himantopus</i>	Y	RC	0.0	0.0	0.0	0.3	0.2	0.0	0.0	0.0	0.0	0.0	V	0.0	0.8	0.0	V	V	0.0	1.6	0.0	0.0	0.0	0.0	1.0	0.3
Pied Avocet	<i>Recurvirostra avosetta</i>	Y	RC	0.0	0.0	0.0	0.0	0.0	0.0	0.0	0.0	0.0	0.0	0.0	0.0	0.0	0.0	0.0	0.0	0.0	0.0	0.0	0.0	0.0	0.0	0.0	0.0
Oriental Pratincole	<i>Glareola maldivarum</i>	Y	LC	0.0	0.0	0.0	0.0	0.0	0.0	0.0	0.0	0.0	0.0	0.0	0.0	0.0	0.0	0.0	0.0	0.0	0.0	0.0	0.0	0.0	0.0	0.0	V
Pacific Golden Plover	<i>Pluvialis fulva</i>	Y	LC	0.0	0.0	0.0	0.0	0.0	0.0	0.0	0.0	0.0	0.0	0.0	0.0	0.0	0.0	0.0	0.0	0.0	0.4	0.0	0.0	0.0	0.0	0.0	0.0
Little Ringed Plover	<i>Charadrius dubius</i>	Y	(LC)	1.8	0.2	0.8	0.5	1.6	1.8	2.0	0.0	0.0	0.0	0.0	0.0	0.0	0.0	V	V	0.0	V	0.0	V	0.0	0.0	0.0	0.0
Kentish Plover	<i>Charadrius alexandrinus</i>	Y	RC	0.0	0.0	0.0	0.0	0.0	0.0	0.0	0.0	0.0	0.0	0.0	0.0	0.0	0.0	0.0	0.0	0.0	0.0	0.0	0.0	0.0	0.0	0.0	0.0
Spotted Redshank	<i>Tringa erythropus</i>	Y	RC	0.0	0.0	0.0	0.0	0.0	0.0	0.0	0.0	0.0	0.0	0.0	0.0	0.0	0.0	0.0	0.0	0.0	0.2	0.0	0.0	0.0	0.0	0.0	0.0
Common Redshank	<i>Tringa totanus</i>	Y	RC	0.0	0.0	0.0	0.0	0.0	0.0	0.0	0.0	0.0	0.0	0.0	0.0	0.0	0.0	0.0	0.0	0.0	0.0	0.0	0.0	0.0	0.0	0.0	0.0
Marsh Sandpiper	<i>Tringa stagnatilis</i>	Y	RC	0.0	0.0	0.0	0.0	0.0	0.0	0.0	0.0	0.0	0.0	0.0	0.0	0.0	0.0	0.0	0.0	0.0	0.0	0.0	0.0	0.0	0.0	0.0	0.0
Common Greenshank	<i>Tringa nebularia</i>	Y	RC	V	V	V	0.0	0.0	0.0	0.0	0.0	0.0	0.0	0.0	0.0	0.0	V	V	V	0.0	V	0.0	0.0	0.0	0.0	0.0	0.3
Green Sandpiper	<i>Tringa ochropus</i>	Y	-	0.3	0.2	0.0	0.3	0.2	0.0	0.0	0.0	0.0	0.0	0.0	V	0.8	0.4	0.2	V	V	V	0.0	0.0	0.0	0.0	2.4	0.8
Wood Sandpiper	<i>Tringa glareola</i>	Y	LC	0.0	2.2	V	V	V	1.0	0.0	0.0	0.0	0.0	0.0	0.0	0.0	1.0	V	0.5	0.0	0.4	0.0	0.0	V	V	0.6	V
Common Sandpiper	<i>Actitis hypoleucos</i>	Y	-	0.8	1.2	3.0	2.0	2.2	0.5	0.0	0.0	0.0	0.3	1.2	0.6	0.3	1.2	1.4	0.5	0.6	1.0	1.0	0.0	0.5	V	0.2	1.5



Common name	Scientific name	Wetland Dependence	Conservation status	Nov- 14	Dec- 14	Jan- 15	Feb- 15	Mar- 15	Apr- 15	May- 15	Jun- 15	Jul- 15	Aug- 15	Sep- 15	Oct- 15	Nov- 15	Dec- 15	Jan- 16	Feb- 16	Mar- 16	Apr- 16	May- 16	Jun- 16	Jul- 16	Aug- 16	Sep- 16	Oct- 16
Eurasian Woodcock	<i>Scolopax rusticola</i>	Y	-	0.0	V	0.0	0.0	0.0	0.0	0.0	0.0	0.0	0.0	0.0	0.0	0.0	0.0	0.0	0.0	0.0	0.0	0.0	0.0	0.0	0.0	0.0	0.0
Pintail/ Swinhoe's Snipe^	<i>Gallinago stenura/G. megala</i>	Y	LC^	0.0	0.0	0.0	0.0	0.0	0.0	0.0	0.0	0.0	0.0	0.0	0.0	0.0	0.0	0.0	0.0	0.0	0.0	0.0	0.0	0.0	0.0	0.0	0.0
Common Snipe	<i>Gallinago gallinago</i>	Y	-	0.0	0.0	0.0	0.0	V	0.0	0.0	0.0	0.0	0.0	0.0	0.0	0.0	0.2	V	V	0.0	0.0	0.0	0.0	0.0	0.0	0.2	0.0
Red-necked Stint	<i>Calidris ruficollis</i>	Y	LC	0.0	0.0	0.0	0.0	0.0	0.0	0.0	0.0	0.0	0.0	0.0	0.0	0.0	0.0	0.0	0.0	0.0	0.0	0.0	0.0	0.0	0.0	0.0	0.0
Temminck's Stint	<i>Calidris temminckii</i>	Y	LC	0.0	0.0	0.0	0.0	0.0	0.0	0.0	0.0	0.0	0.0	0.0	0.0	0.0	0.0	0.0	0.0	0.0	0.0	0.0	0.0	0.0	0.0	0.0	0.0
Long-toed Stint	<i>Calidris subminuta</i>	Y	LC	0.0	0.0	0.0	0.0	0.0	0.0	0.0	0.0	0.0	0.0	0.0	0.0	0.0	0.0	0.0	0.0	0.0	0.0	0.0	0.0	0.0	0.0	0.0	0.0
Whiskered Tern	<i>Chlidonias hybrida</i>	Y	-	0.0	0.0	0.0	0.0	0.0	0.0	0.0	0.0	0.0	0.0	0.0	0.0	0.0	0.0	0.0	0.0	0.0	0.0	0.0	0.0	0.0	0.0	0.0	0.0
Domestic Pigeon	<i>Columba livia</i>	N	-	0.0	0.0	0.0	0.0	0.0	0.0	0.0	0.0	0.0	0.0	0.0	0.0	0.0	0.0	0.0	0.0	0.0	0.0	0.0	0.0	0.0	0.0	0.0	0.0
Oriental Turtle Dove	<i>Streptopelia orientalis</i>	N	-	0.0	0.0	0.0	0.0	0.0	0.0	0.0	0.0	0.0	0.0	0.0	0.0	0.0	0.2	V	0.0	V	0.0	0.0	0.0	0.0	0.0	0.0	0.0
Red Turtle Dove	<i>Streptopelia tranquebarica</i>	N	-	0.0	0.0	0.0	0.0	0.0	0.0	0.4	0.0	0.0	0.0	0.0	0.0	0.0	0.0	0.0	0.0	0.0	0.0	0.0	0.0	0.0	0.0	0.0	0.0
Spotted Dove	<i>Spilopelia chinensis</i>	N	-	1.5	4.2	3.8	1.3	2.2	6.0	3.6	1.6	2.2	2.0	3.0	3.4	1.3	4.8	6.0	3.5	3.4	2.2	2.2	1.8	3.0	3.4	2.2	2.5
Eurasian Collared Dove	<i>Streptopelia decaocto</i>	N	-	0.0	0.0	0.0	0.0	0.0	0.5	0.4	0.0	0.0	0.0	0.0	0.0	0.0	1.2	4.6	11.0	0.2	0.0	0.4	0.0	0.0	0.6	0.4	0.5
Asian Koel	<i>Eudynamis scolopaceus</i>	N	-	0.0	0.0	0.0	0.0	V	0.0	0.2	0.2	0.0	0.3	V	0.0	0.0	0.0	0.0	0.0	0.2	0.2	0.2	0.2	0.3	0.2	V	0.0
Greater Coucal#	<i>Centropus sinensis</i>	N	-	V	0.2	0.3	0.3	0.6	1.0	0.4	0.2	0.2	V	V	0.0	0.5	1.0	0.0	0.8	V	0.2	0.6	0.6	0.8	0.4	0.2	0.3
Eurasian Eagle Owl	<i>Bubo bubo</i>	N	RC	0.0	0.0	0.0	V	0.0	0.0	0.0	0.0	0.0	0.0	0.0	0.0	0.0	0.0	0.0	0.0	0.0	0.0	0.0	0.0	0.0	0.0	0.0	0.0
Savanna Nightjar	<i>Caprimulgus affinis</i>	N	-	0.0	0.0	0.0	V	0.0	0.0	0.0	0.0	0.0	0.0	0.0	0.0	0.0	0.0	0.0	V	0.0	0.0	V	V	0.0	0.0	0.0	0.0
Pacific Swift	<i>Apus pacificus</i>	N	(LC)	0.0	0.0	0.0	0.0	0.0	0.0	0.0	0.0	0.0	0.0	0.0	0.0	0.0	0.0	0.0	0.0	0.0	0.0	0.0	0.0	0.0	0.0	0.2	0.0

Common name	Scientific name	Wetland Dependence	Conservation status	Nov- 14	Dec- 14	Jan- 15	Feb- 15	Mar- 15	Apr- 15	May- 15	Jun- 15	Jul- 15	Aug- 15	Sep- 15	Oct- 15	Nov- 15	Dec- 15	Jan- 16	Feb- 16	Mar- 16	Apr- 16	May- 16	Jun- 16	Jul- 16	Aug- 16	Sep- 16	Oct- 16
House Swift	<i>Apus nipalensis</i>	N	-	0.0	0.0	14.5	105.8	14.4	0.8	0.0	0.2	0.0	0.0	0.0	0.0	0.0	0.0	0.0	V	0.0	0.0	0.0	0.0	0.0	0.0	0.0	0.0
Pied Kingfisher	<i>Ceryle rudis</i>	Y	(LC)	0.0	0.4	0.5	0.3	0.2	0.0	0.2	0.0	0.0	0.8	0.0	0.0	0.3	0.0	0.2	0.3	0.0	V	0.2	0.0	0.0	0.0	V	0.0
White-throated Kingfisher	<i>Halcyon smymensis</i>	Y	(LC)	0.0	0.2	0.0	0.0	0.0	0.3	0.0	0.0	0.0	0.0	0.2	0.4	0.3	0.4	0.4	0.3	0.0	0.2	V	V	0.5	0.2	0.4	V
Common Kingfisher	<i>Alcedo atthis</i>	Y	-	1.3	0.8	1.8	2.8	1.4	1.5	0.8	0.8	0.2	0.5	0.6	2.2	1.5	3.0	3.0	1.3	1.6	1.4	2.0	0.6	2.0	0.2	0.6	0.8
Eurasian Hoopoe	<i>Upupa epops</i>	N	-	0.0	0.0	0.0	0.3	0.0	0.0	0.0	0.0	0.0	0.0	0.0	0.0	0.0	0.0	0.0	0.0	0.0	0.0	0.0	0.0	0.0	0.0	0.0	0.0
Barn Swallow	<i>Hirundo rustica</i>	N	-	0.5	0.0	13.0	15.3	14.4	9.8	0.2	2.2	0.8	V	0.8	V	2.0	V	0.0	V	1.6	1.6	V	1.4	V	V	0.2	0.0
Red-rumped Swallow	<i>Hirundo daurica</i>	N	-	0.0	0.0	0.0	0.0	0.0	0.0	0.0	0.0	0.0	0.0	0.0	0.0	0.0	2.4	0.0	V	0.0	0.0	0.0	0.0	0.0	0.0	0.0	0.0
Eastern Yellow Wagtail	<i>Motacilla tschutschensis</i>	Y	-	1.8	0.4	2.0	4.3	2.0	1.0	0.0	0.0	0.0	0.0	0.0	0.0	V	1.8	1.4	2.0	1.2	1.0	0.0	0.0	0.0	0.0	0.0	0.3
Grey Wagtail	<i>Motacilla cinerea</i>	Y	-	0.0	0.0	0.0	0.0	0.0	0.0	0.0	0.0	0.0	0.0	0.0	0.0	0.0	V	0.2	0.3	0.0	0.0	0.0	0.0	0.0	0.0	0.0	0.0
White Wagtail	<i>Motacilla alba</i>	Y	-	4.0	5.6	6.3	9.5	4.8	3.3	1.4	V	0.0	0.3	0.4	0.4	0.8	3.8	4.0	2.0	1.0	1.2	0.2	V	0.3	0.4	0.6	1.0
Richard's Pipit	<i>Anthus richardi</i>	Y	-	0.3	0.0	0.5	V	0.0	0.0	0.0	0.0	0.0	0.0	0.0	0.0	0.0	0.0	0.2	0.3	0.4	0.2	0.0	0.0	0.0	0.0	0.0	0.0
Olive-backed Pipit	<i>Anthus hodgsoni</i>	N	-	0.3	2.2	0.3	1.5	0.4	0.0	0.0	0.0	0.0	0.0	0.0	0.0	0.0	0.2	0.0	2.8	0.2	V	0.0	0.0	0.0	0.0	0.0	0.0
Red-throated Pipit	<i>Anthus cervinus</i>	N	LC	0.0	0.0	0.0	0.0	0.0	0.0	0.0	0.0	0.0	0.0	0.0	0.0	0.0	0.0	0.0	0.0	0.0	0.0	0.0	0.0	0.0	0.0	0.0	0.0
Buff-bellied Pipit	<i>Anthus rubescens</i>	N	LC	0.0	0.0	0.0	0.0	0.0	0.0	0.0	0.0	0.0	0.0	0.0	0.0	0.0	0.0	0.0	0.0	0.0	0.0	0.0	0.0	0.0	0.0	0.0	0.0
Red-whiskered Bulbul	<i>Pycnonotus jocosus</i>	N	-	0.8	3.4	7.3	1.3	0.6	0.8	1.0	2.6	5.8	4.5	1.4	1.0	5.3	11.0	20.0	6.5	1.6	4.6	2.6	4.6	1.8	4.0	4.4	8.0
Chinese Bulbul	<i>Pycnonotus sinensis</i>	N	-	5.3	3.0	24.8	10.0	4.8	6.3	5.6	4.6	2.6	1.8	2.6	1.4	3.0	10.2	9.0	5.8	1.0	1.8	2.2	3.0	7.8	7.8	0.4	1.5
Sooty-headed Bulbul	<i>Pycnonotus aurigaster</i>	N	-	0.0	0.0	0.0	0.0	0.0	0.0	0.0	0.0	0.0	0.0	0.0	0.0	0.0	0.0	V	0.0	0.0	V	0.4	2.0	0.0	0.0	0.0	0.0

Common name	Scientific name	Wetland Dependence	Conservation status	Nov- 14	Dec- 14	Jan- 15	Feb- 15	Mar- 15	Apr- 15	May- 15	Jun- 15	Jul- 15	Aug- 15	Sep- 15	Oct- 15	Nov- 15	Dec- 15	Jan- 16	Feb- 16	Mar- 16	Apr- 16	May- 16	Jun- 16	Jul- 16	Aug- 16	Sep- 16	Oct- 16
Bull-headed Shrike	<i>Lanius bucephalus</i>	N	-	0.0	0.0	0.0	0.0	0.0	0.0	0.0	0.0	0.0	0.0	0.0	0.0	0.0	0.0	0.0	0.0	0.0	0.0	0.0	0.0	0.0	0.0	0.0	0.0
Brown Shrike	<i>Lanius cristatus</i>	N	-	0.0	0.0	0.0	0.0	0.0	0.3	0.0	0.0	0.0	0.0	0.0	0.0	0.0	0.0	0.0	0.0	0.0	0.0	0.0	0.0	0.0	0.0	0.0	0.0
Long-tailed Shrike	<i>Lanius schach</i>	N	-	0.0	0.2	0.8	0.5	0.4	0.0	0.0	0.0	0.0	0.3	0.4	0.4	0.3	0.6	0.2	0.3	V	0.6	0.4	V	0.5	0.4	0.4	0.0
Oriental Magpie Robin	<i>Copsychus saularis</i>	N	-	0.0	0.2	0.5	0.8	0.6	0.5	0.2	1.2	0.2	0.0	0.0	0.2	0.5	0.2	0.4	0.5	1.0	0.6	V	V	1.3	1.2	0.2	0.0
Daurian Redstart	<i>Phoenicurus aureus</i>	N	-	0.3	1.6	0.8	0.5	0.6	0.0	0.0	0.0	0.0	0.0	0.0	0.0	0.3	1.0	0.8	0.8	V	0.0	0.0	0.0	0.0	0.0	0.0	0.0
Stejneger's Stonechat	<i>Saxicola stejnegeri</i>	N	-	0.3	0.2	0.3	0.8	0.8	0.3	0.0	0.0	0.0	0.0	0.0	2.2	0.5	1.0	0.6	0.5	V	V	0.0	0.0	0.0	0.0	0.4	V
Grey-backed thrush	<i>Turdus hortulorum</i>	N	-	0.0	0.0	0.0	0.0	0.0	0.0	0.0	0.0	0.0	0.0	0.0	0.0	0.0	0.0	0.0	0.3	0.0	0.0	0.0	0.0	0.0	0.0	0.0	0.0
Masked Laughingthrush	<i>Garrulax perspicillatus</i>	N	-	0.0	1.2	0.0	1.5	1.0	1.3	1.2	0.4	2.4	3.0	1.2	V	V	2.6	2.0	2.5	2.6	1.6	2.8	1.6	0.8	1.4	0.4	0.0
Lanceolated Warbler	<i>Locustella lanceolata</i>	Y	-	0.0	0.0	0.0	0.0	0.0	0.0	0.0	0.0	0.0	0.0	0.0	0.0	0.0	0.0	0.0	0.0	0.0	0.0	0.0	0.0	0.0	0.0	0.0	0.0
Pallas's Grasshopper Warbler	<i>Locustella certhiola</i>	Y	LC	0.0	0.0	0.0	0.0	0.0	0.0	0.0	0.0	0.0	0.0	0.0	0.0	0.0	0.0	0.0	0.0	0.0	0.0	0.0	0.0	0.0	0.0	0.0	0.0
Oriental Reed Warbler	<i>Acrocephalus orientalis</i>	Y	-	0.0	0.0	0.0	0.0	0.0	0.0	0.0	0.0	0.0	0.0	0.0	0.0	0.0	0.0	0.0	0.0	0.0	0.0	0.0	0.0	0.0	V	0.4	0.0
Thick-billed Warbler	<i>Acrocephalus aedon</i>	Y	LC	0.0	0.0	0.0	0.0	0.0	0.0	0.0	0.0	0.0	0.0	V	0.0	0.0	0.0	0.0	0.0	0.0	0.0	0.0	0.0	0.0	0.0	0.0	0.0
Black-browed Reed Warbler	<i>Acrocephalus bistrigiceps</i>	Y	-	0.0	V	0.0	0.0	0.0	0.0	0.0	0.0	0.0	0.0	0.0	V	0.0	0.0	0.0	0.0	0.0	0.0	0.0	0.0	0.0	0.0	0.0	0.0
Common Tailorbird	<i>Orthotomus sutorius</i>	N	-	0.5	1.2	1.0	1.5	0.4	0.0	0.0	0.0	0.0	0.8	0.0	0.0	0.0	V	0.0	0.0	0.0	0.0	0.2	0.0	0.0	0.0	0.2	0.3
Dusky Warbler	<i>Phylloscopus fuscatus</i>	N	-	0.0	0.0	0.0	V	V	0.0	0.0	0.0	0.0	0.0	0.0	0.0	0.3	0.0	0.2	V	0.0	V	0.0	0.0	0.0	0.0	0.0	0.0
Pallas's Leaf Warbler	<i>Phylloscopus proregulus</i>	N	-	0.0	V	0.0	0.0	0.0	0.0	0.0	0.0	0.0	0.0	0.0	0.0	0.4	0.2	0.0	0.0	0.0	0.0	0.0	0.0	0.0	0.0	0.0	0.0
Yellow-browed warbler	<i>Phylloscopus inornatus</i>	N	-	0.3	0.2	0.3	0.0	0.0	0.0	0.0	0.0	0.0	0.0	0.0	0.0	0.3	0.0	0.0	0.8	0.0	0.0	V	0.0	V	0.0	0.0	0.0

Common name	Scientific name	Wetland Dependence	Conservation status	Nov- 14	Dec- 14	Jan- 15	Feb- 15	Mar- 15	Apr- 15	May- 15	Jun- 15	Jul- 15	Aug- 15	Sep- 15	Oct- 15	Nov- 15	Dec- 15	Jan- 16	Feb- 16	Mar- 16	Apr- 16	May- 16	Jun- 16	Jul- 16	Aug- 16	Sep- 16	Oct- 16
Zitting Cisticola	<i>Cisticola juncidis</i>	Y	LC	0.0	0.0	0.0	0.0	0.0	0.0	0.0	0.0	0.0	0.0	0.0	0.0	0.0	0.6	0.0	0.0	0.2	0.0	0.0	0.0	0.0	0.0	0.0	0.0
Yellow-bellied Prinia	<i>Prinia flaviventris</i>	N	-	0.5	0.0	0.3	0.3	2.6	0.8	2.0	1.5	0.0	0.0	0.0	0.0	0.0	0.0	0.2	0.8	0.6	0.8	0.0	0.2	1.3	0.2	V	V
Plain Prinia	<i>Prinia inornata</i>	N	-	2.8	0.2	1.3	3.5	1.6	2.8	1.2	1.0	1.6	1.5	0.6	0.6	2.3	1.0	0.6	0.8	1.0	0.6	2.8	1.8	0.8	1.0	0.2	0.5
Asian Brown Flycatcher	<i>Muscicapa dauurica</i>	N	-	0.0	0.0	0.0	0.0	0.0	0.0	0.0	0.0	0.0	0.0	0.0	0.0	0.0	0.2	0.0	0.0	0.0	0.0	0.0	0.0	0.0	0.0	0.0	0.0
Chinese Penduline-Tit	<i>Remiz consobrinus</i>	Y	RC	0.0	0.4	1.5	4.5	3.2	V	0.0	0.0	0.0	0.0	0.0	0.0	0.0	0.0	0.2	V	0.2	0.0	0.0	0.0	0.0	0.0	0.0	0.0
Great Tit	<i>Parus major</i>	N	-	0.0	0.0	0.0	0.0	0.0	0.0	0.0	0.0	0.0	0.0	0.0	0.0	0.0	0.0	0.0	0.5	0.2	0.0	0.0	0.0	0.0	0.0	0.0	0.0
Japanese White-eye	<i>Zosterops japonica</i>	N	-	0.0	1.0	V	V	0.2	0.0	0.2	V	3.8	4.3	0.0	0.0	0.0	0.4	3.2	V	V	0.0	1.4	0.4	V	0.8	0.8	V
Little Bunting	<i>Emberiza pusilla</i>	N	-	0.0	0.0	0.0	0.0	0.0	0.0	0.0	0.0	0.0	0.0	0.0	0.0	0.0	0.0	0.0	0.0	0.0	0.0	0.0	0.0	0.0	0.0	0.0	0.0
Black-faced Bunting	<i>Emberiza spodocephala</i>	N	-	0.0	0.0	0.0	0.0	V	0.0	0.0	0.0	0.0	0.0	0.0	0.0	0.0	0.0	0.0	V	0.0	0.0	0.0	0.0	0.0	0.0	0.0	0.0
Chinese Grosbeak	<i>Eophona migratoria</i>	Y	LC	0.0	0.0	0.0	0.0	0.0	0.0	0.0	0.0	0.0	0.0	0.0	0.0	0.0	0.0	0.0	0.0	0.0	0.0	0.0	0.0	0.0	0.0	0.0	0.0
Scaly-breasted Munia	<i>Lonchura punctulata</i>	N	-	3.3	0.6	V	V	4.0	11.3	0.6	V	V	3.3	1.6	0.4	2.3	2.2	1.4	0.0	0.2	V	0.0	0.0	0.0	2.2	V	0.0
Eurasian Tree Sparrow	<i>Passer montanus</i>	N	-	0.0	V	4.5	4.0	1.4	0.0	0.2	0.0	0.4	0.0	0.6	0.4	V	0.0	0.0	0.0	0.0	0.0	1.4	1.4	0.0	V	V	0.0
Red-billed Starling	<i>Spodiopsar sericeus</i>	Y	(RC)*	0.0	0.0	0.0	24.5	V	0.0	V	0.4	0.0	0.0	0.0	0.0	0.0	0.0	2.0	8.0	0.0	0.0	0.0	0.0	0.0	0.0	0.0	0.0
White-cheeked Starling	<i>Spodiopsar cineraceus</i>	Y	PRC	0.0	V	0.0	0.0	0.0	0.0	0.0	0.0	0.0	0.0	0.2	0.0	0.0	V	0.0	V	0.0	0.8	V	1.0	0.0	0.0	0.0	0.0
Black-collared Starling	<i>Gracupica nigricollis</i>	N	-	0.3	3.0	1.3	2.0	4.2	2.3	2.0	1.0	1.6	1.8	0.4	1.6	V	2.2	1.0	3.5	0.4	1.0	1.0	0.8	0.8	2.2	0.6	1.8
White-shouldered Starling	<i>Sturnia sinensis</i>	Y	(LC)	0.0	0.0	0.0	0.0	0.0	0.0	0.0	0.8	V	V	0.0	0.0	0.0	0.0	0.0	0.0	0.0	V	0.2	V	0.0	V	0.0	V
Common Myna	<i>Acridotheres tristis</i>	N	-	0.0	0.0	0.0	0.0	0.0	0.0	0.0	0.0	0.0	0.0	0.4	0.0	0.0	0.0	0.0	0.0	V	0.0	0.0	0.0	0.5	V	0.0	0.0

Common name	Scientific name	Wetland Dependence	Conservation status	Nov- 14	Dec- 14	Jan- 15	Feb- 15	Mar- 15	Apr- 15	May- 15	Jun- 15	Jul- 15	Aug- 15	Sep- 15	Oct- 15	Nov- 15	Dec- 15	Jan- 16	Feb- 16	Mar- 16	Apr- 16	May- 16	Jun- 16	Jul- 16	Aug- 16	Sep- 16	Oct- 16
Crested Myna	<i>Acridotheres cristatellus</i>	N	–	2.8	4.0	0.0	0.5	2.2	2.3	2.8	6.8	0.4	1.8	0.2	0.6	V	4.8	1.2	3.8	1.2	4.6	0.6	1.8	0.3	4.4	1.0	0.0
Black-naped Oriole	<i>Oriolus chinensis</i>	Y	LC	0.0	0.0	0.0	0.0	0.0	0.0	0.0	0.0	0.0	0.0	0.0	0.0	0.0	0.0	0.0	0.0	0.0	0.0	0.0	0.0	0.0	0.0	0.0	0.0
Black Drongo	<i>Dicrurus macrocercus</i>	N	-	0.0	V	0.0	0.0	0.0	0.0	0.0	0.0	0.0	2.3	1.6	0.6	0.0	V	0.2	0.3	0.0	0.0	0.0	0.0	0.0	1.0	1.2	1.5
Azure-winged Magpie	<i>Cyanopica cyanus</i>	N	-	0.0	0.0	0.0	0.0	0.0	0.0	0.0	0.0	0.0	0.0	0.0	0.0	0.0	0.0	0.0	0.0	0.0	0.0	0.0	0.0	0.0	0.0	0.0	0.0
Eurasian Magpie	<i>Pica pica</i>	N	-	0.0	0.0	0.3	0.8	V	0.5	0.0	0.0	V	0.0	0.0	0.0	0.0	0.0	0.2	1.0	0.2	0.2	V	0.0	V	0.0	0.0	V
Large-billed Crow	<i>Corvus macrorhynchos</i>	N	-	0.0	0.0	0.0	0.0	0.0	0.0	0.0	0.0	0.0	0.5	0.0	0.0	0.0	0.0	0.0	0.2	0.8	0.6	0.0	0.0	0.0	0.0	0.0	0.0
Collared Crow	<i>Corvus torquatus</i>	Y	LC, NT	0.0	0.0	0.0	0.0	0.0	V	0.2	0.0	0.0	0.0	V	0.4	0.0	V	0.4	0.0	V	0.2	0.0	V	V	V	0.4	0.0

- (1) Conservation Status follows that of Fellowes et. al. (2002) ). Letters in parentheses indicate that the assessment is on the basis of restrictedness in breeding and/or roosting sites rather than in general occurrence. (Fellowes et al. 2002)
- ^Pintail Snipe and Swinhoe's Snipe cannot be distinguished in field, conservation status refers to Swinhoe's Snipe
- V indicates the species is recorded outside regular surveys
- DS indicates species recorded during surveys
- # Greater Coucal is listed as vulnerable (VU) in China Red Data Book and it is protected under terrestrial wildlife state protection (category II).
- \* Red-billed Starling is considered by Fellowes *et al* (2002) to be of Global Concern. Since publication, however, the global population estimate has been revised and the species is not now considered globally threatened. A listing of Regional Concern (RC) based on the importance of the large roosts present near Deep Bay, is considered to be more appropriate. (Wetland Restoration Plan, Mott, 2008). Red-billed Starling is now listed as Least Concern by IUCN. (IUCN, 2016)

**Table B7: Summary of Bird Species Recorded at the WRA and their Respective Monthly Mean between November 2016 and April 2018**

Common name	Scientific name	Wetland Dependence	Conservation status	Nov-16	Dec-16	Jan-17	Feb-17	Mar-17	Apr-17	May-17	Jun-17	Jul-17	Aug-17	Sep-17	Oct-17	Nov-17	Dec-17	Jan-18	Feb-18	Mar-18	Apr-18
Little Grebe	<i>Tachybaptus ruficollis</i>	Y	LC	1.8	3.4	2.3	4.0	5.0	1.3	0.4	0.6	V	0.8	2.0	0.8	1.8	3.3	0.6	1.2	1.0	2.8
Great Cormorant	<i>Phalacrocorax carbo</i>	Y	PRC	0.8	1.8	0.3	0.4	0.2	0.0	0.0	0.0	0.0	0.0	0.0	0.0	V	0.8	0.4	0.0	0.0	V
Grey Heron	<i>Ardea cinerea</i>	Y	PRC	1.4	3.4	2.3	4.2	2.2	0.0	0.0	0.0	0.0	0.0	0.0	1.2	2.5	2.5	1.0	0.4	1.5	0.0
Purple Heron	<i>Ardea purpurea</i>	Y	RC	0.0	0.0	0.0	0.0	0.0	0.0	0.0	0.0	0.0	0.0	0.0	0.0	0.0	0.0	0.0	0.0	0.0	0.0
Great Egret	<i>Ardea alba</i>	Y	PRC, (RC)	0.8	2.2	1.5	2.4	1.2	1.3	2.2	0.8	0.8	0.6	0.2	0.8	2.5	1.0	0.8	1.6	1.0	0.3
Intermediate Egret	<i>Egretta intermedia</i>	Y	RC	0.0	0.0	0.0	0.0	0.0	0.0	0.0	0.0	0.0	0.0	0.0	0.0	0.0	0.0	0.0	0.0	V	0.0
Little Egret	<i>Egretta garzetta</i>	Y	PRC, (RC)	5.8	5.6	9.3	4.2	6.4	4.0	19.4	2.4	0.3	4.6	2.6	10.2	62.3	15.0	4.0	2.8	5.8	4.0
Eastern Cattle Egret	<i>Bubulcus coromandus</i>	Y	(LC)	0.0	0.0	0.0	0.0	0.0	0.0	0.0	0.0	0.0	0.0	0.0	V	0.0	0.0	0.4	0.0	0.0	0.0
Chinese Pond Heron	<i>Ardeola bacchus</i>	Y	PRC, (RC)	5.6	4.4	6.5	6.2	3.6	1.0	2.0	0.8	1.5	4.0	1.6	4.2	4.0	7.0	1.0	0.6	0.3	1.3
Yellow Bittern	<i>Ixobrychus sinensis</i>	Y	(LC)	0.2	0.8	0.0	0.2	0.4	0.5	0.8	2.0	0.5	1.2	0.6	0.2	0.8	0.0	0.2	0.0	0.3	0.0
Cinnamon Bittern	<i>Ixobrychus cinnamomeus</i>	Y	LC	0.0	0.0	0.0	0.0	0.0	0.0	0.2	0.0	0.0	0.0	0.0	0.0	0.0	0.0	0.0	0.0	0.0	0.0
Black-crowned Night Heron	<i>Nycticorax nycticorax</i>	Y	(LC)	0.0	0.0	0.0	0.0	0.0	0.0	0.4	V	V	0.0	0.2	0.0	0.3	0.0	0.0	0.0	V	0.0
Eurasian Spoonbill	<i>Platalea leucorodia</i>	Y	LC	0.0	0.0	0.0	0.0	0.0	0.0	0.0	0.0	0.0	0.0	0.0	0.0	0.0	0.0	0.0	0.0	0.0	0.0
Black-faced Spoonbill	<i>Platalea minor</i>	Y	PGC, EN	0.0	0.2	0.0	0.0	0.0	0.0	0.0	0.0	0.0	0.0	0.0	0.0	0.0	0.0	0.0	0.0	0.0	0.0
Mandarin Duck	<i>Aix galericulata</i>	Y	-	0.0	0.0	0.0	0.0	0.0	0.0	0.0	0.0	0.0	0.0	0.0	0.0	0.0	0.0	0.0	0.0	0.0	0.0
Eurasian Wigeon	<i>Anas penelope</i>	Y	RC	0.0	0.0	0.0	0.0	0.0	0.0	0.0	0.0	0.0	0.0	0.0	0.0	0.0	0.0	0.0	0.0	0.0	0.0
Eurasian Woodcock	<i>Scolopax rusticola</i>	Y	-	0.0	0.0	0.0	0.0	0.0	0.0	0.0	0.0	0.0	0.0	0.0	0.0	0.0	0.0	0.0	0.0	0.0	0.0
Eurasian Teal	<i>Anas crecca</i>	Y	RC	0.0	0.0	0.0	0.0	0.0	0.0	0.0	0.0	0.0	0.0	0.0	0.0	0.0	0.0	0.0	0.0	0.0	0.0

Common name	Scientific name	Wetland Dependence	Conservation status	Nov-16	Dec-16	Jan-17	Feb-17	Mar-17	Apr-17	May-17	Jun-17	Jul-17	Aug-17	Sep-17	Oct-17	Nov-17	Dec-17	Jan-18	Feb-18	Mar-18	Apr-18
Northern Pintail	<i>Anas acuta</i>	Y	RC	0.0	0.0	0.0	0.0	0.0	0.0	0.0	0.0	0.0	0.0	0.0	0.0	0.0	0.0	0.0	0.0	0.0	0.0
Northern Shoveler	<i>Anas clypeata</i>	Y	RC	0.0	0.0	0.0	0.0	0.0	0.0	0.0	0.0	0.0	0.0	0.0	0.0	0.0	0.0	0.0	0.0	0.0	0.0
Tufted Duck	<i>Aythya fuligula</i>	Y	LC	0.0	0.0	0.0	0.0	0.0	0.0	0.0	0.0	0.0	0.0	0.0	0.0	0.0	0.0	0.0	0.0	0.0	0.0
Garganey	<i>Anas querquedula</i>	Y	-	0.0	0.0	0.0	0.0	0.0	0.0	0.0	0.0	0.0	0.0	0.0	0.0	0.0	0.0	0.0	0.0	0.0	0.0
Western Osprey	<i>Pandion haliaetus</i>	Y	RC	0.0	0.0	0.0	0.0	0.0	0.0	0.0	0.0	0.0	0.0	0.0	0.0	0.0	0.0	0.0	0.0	0.0	0.0
Besra	<i>Accipiter virgatus</i>	N	-	0.0	0.0	0.0	0.0	0.0	0.0	0.0	0.0	0.0	0.0	0.0	0.0	0.0	0.0	V	0.0	V	0.0
Black-winged Kite	<i>Elanus caeruleus</i>	Y	LC	0.0	0.0	0.0	0.0	0.0	0.0	0.0	0.0	0.0	0.0	0.0	0.0	0.0	0.0	0.0	0.0	0.0	0.0
Black Kite	<i>Milvus migrans</i>	Y	(RC)	0.0	0.4	0.3	1.0	0.4	0.3	0.0	0.0	V	0.2	0.6	0.0	1.0	0.8	0.2	0.6	0.3	0.5
Crested Serpent Eagle	<i>Spilornis cheela</i>	N	(LC)	0.0	0.0	0.0	0.0	0.0	0.0	0.0	0.0	0.0	0.0	0.0	0.0	0.0	0.0	0.0	0.0	0.3	0.0
Crested Goshawk	<i>Accipiter trivirgatus</i>	N	-	0.0	0.0	0.0	0.0	0.0	0.0	0.0	0.0	0.0	0.0	0.0	0.0	0.0	0.0	0.0	V	0.0	0.0
Greater Spotted Eagle	<i>Clanga clanga</i>	Y	GC	0.0	0.0	0.0	0.0	0.0	0.0	0.0	0.0	0.0	0.0	0.0	0.0	V	0.0	0.0	0.2	0.0	0.0
Eastern Imperial Eagle	<i>Aquila heliaca</i>	Y	-	0.0	0.0	0.0	0.0	0.0	0.0	0.0	0.0	0.0	0.0	0.0	0.0	0.0	V	0.0	0.0	0.0	0.0
Eastern Buzzard	<i>Buteo japonicus</i>	Y	-	0.0	0.0	0.0	0.4	0.2	0.0	0.0	0.0	0.0	0.0	0.0	0.0	0.0	0.0	V	V	V	0.0
Common Kestrel	<i>Falco tinnunculus</i>	N	-	0.2	0.0	0.0	0.0	0.0	0.0	0.0	0.0	0.0	0.0	0.0	0.0	0.0	0.0	0.0	0.0	0.0	0.0
Peregrine Falcon	<i>Falco peregrinus</i>	Y	(LC)	0.0	0.0	0.0	0.2	0.0	0.0	0.0	0.0	0.0	0.0	0.0	0.0	0.0	0.0	0.0	0.0	0.0	0.0
Eurasian Hobby	<i>Falco subbuteo</i>	Y	(LC)	0.0	0.0	0.0	0.0	0.0	0.0	0.0	0.0	0.0	0.0	0.0	0.0	0.0	0.0	0.0	0.0	0.0	V
Japanese Quail	<i>Coturnix japonica</i>	N	LC	0.0	0.0	0.0	0.0	0.0	0.0	0.0	0.0	0.0	0.0	0.0	0.0	0.0	0.0	0.0	0.0	0.0	0.0
Baillon's Crane	<i>Porzana pusilla</i>	Y	LC	0.0	0.0	0.0	0.0	0.0	0.0	0.0	0.0	0.0	0.0	0.0	0.0	0.0	0.0	0.0	0.0	0.0	0.0

Common name	Scientific name	Wetland Dependence	Conservation status	Nov-16	Dec-16	Jan-17	Feb-17	Mar-17	Apr-17	May-17	Jun-17	Jul-17	Aug-17	Sep-17	Oct-17	Nov-17	Dec-17	Jan-18	Feb-18	Mar-18	Apr-18
White-breasted Waterhen	<i>Amauornis phoenicurus</i>	Y	-	0.0	0.4	0.3	0.2	0.6	1.0	0.6	0.2	0.5	0.2	0.4	0.0	0.3	0.3	0.0	V	0.3	0.3
Watercock	<i>Gallicrex cinerea</i>	Y	RC	0.0	0.0	0.0	0.0	0.0	0.0	0.0	0.0	0.0	0.0	0.0	0.0	0.0	0.0	0.0	0.0	0.0	0.0
Common Moorhen	<i>Gallinula chloropus</i>	Y	-	0.0	0.0	0.3	0.6	0.0	0.8	0.0	0.0	0.0	0.0	0.0	0.0	0.8	0.0	V	V	V	V
Pheasant-tailed Jacana	<i>Hydrophasianus chirurgus</i>	Y	LC	0.0	0.0	0.0	0.0	0.0	0.0	0.0	0.0	0.0	0.0	0.0	0.0	0.0	0.0	0.0	0.0	0.0	0.0
Greater Painted-snipe	<i>Rostratula benghalensis</i>	Y	LC	0.0	0.0	0.0	0.0	0.0	0.0	0.0	0.0	0.0	0.0	0.0	0.0	0.0	0.0	0.0	0.0	0.0	0.0
Black-winged Stilt	<i>Himantopus himantopus</i>	Y	RC	0.6	0.0	0.0	0.0	0.0	0.0	0.0	V	0.0	0.0	0.0	0.0	0.0	0.0	0.4	0.4	0.0	0.0
Pied Avocet	<i>Recurvirostra avosetta</i>	Y	RC	0.0	0.0	0.0	0.0	0.0	0.0	0.0	0.0	0.0	0.0	0.0	0.0	0.0	0.0	0.0	0.0	0.0	0.0
Oriental Pratincole	<i>Glareola maldivarum</i>	Y	LC	0.0	0.0	0.0	0.0	0.0	0.0	0.0	0.0	0.0	0.0	0.0	0.0	0.0	0.0	0.0	V	0.0	0.0
Pacific Golden Plover	<i>Pluvialis fulva</i>	Y	LC	0.0	0.0	0.0	0.0	0.0	0.0	0.0	0.0	0.0	0.0	0.0	0.0	0.0	0.0	0.0	0.0	0.0	0.0
Little Ringed Plover	<i>Charadrius dubius</i>	Y	LC	0.0	1.4	0.0	0.8	0.8	0.3	0.0	V	0.0	0.0	0.0	0.0	0.0	0.5	0.0	V	0.0	0.0
Kentish Plover	<i>Charadrius alexandrinus</i>	Y	RC	0.6	0.0	0.0	0.0	0.0	0.0	0.0	0.0	0.0	0.0	0.0	0.0	0.0	0.0	0.0	0.0	0.0	0.0
Spotted Redshank	<i>Tringa erythropus</i>	Y	RC	0.0	0.0	0.0	0.0	0.0	0.0	0.0	0.0	0.0	0.0	0.0	0.0	0.0	0.0	0.0	0.0	0.0	0.0
Common Greenshank	<i>Tringa nebularia</i>	Y	RC	0.0	0.0	0.0	0.0	0.0	0.0	0.0	0.0	0.0	0.0	0.0	0.0	0.0	0.0	V	V	V	V
Marsh Sandpiper	<i>Tringa stagnatilis</i>	Y	RC	0.0	0.0	0.0	0.0	0.0	2.3	0.0	0.0	0.0	0.0	0.0	0.0	0.0	0.0	0.0	0.0	0.0	0.0
Green Sandpiper	<i>Tringa ochropus</i>	Y	-	0.6	2.0	0.8	0.8	0.4	0.8	0.0	0.0	V	0.0	0.0	0.0	V	0.0	0.2	0.2	1.3	1.8
Wood Sandpiper	<i>Tringa glareola</i>	Y	LC	0.6	0.2	0.0	0.2	0.2	0.0	0.0	0.0	V	0.0	0.0	0.2	0.0	V	0.6	0.2	0.0	V
Common Sandpiper	<i>Actitis hypoleucos</i>	Y	-	0.4	0.4	0.8	2.2	0.6	1.0	0.0	0.0	V	0.0	0.2	0.6	0.8	0.3	0.8	0.4	1.5	1.3



Common name	Scientific name	Wetland Dependence	Conservation status	Nov-16	Dec-16	Jan-17	Feb-17	Mar-17	Apr-17	May-17	Jun-17	Jul-17	Aug-17	Sep-17	Oct-17	Nov-17	Dec-17	Jan-18	Feb-18	Mar-18	Apr-18
Pintail/Swinhoe's Snipe^	<i>Gallinago stenura/G. megala</i>	Y	LC^	0.0	0.0	0.0	0.0	0.0	0.0	0.0	0.0	0.0	0.0	0.0	0.0	0.0	0.0	0.0	0.0	0.0	0.0
Common Snipe	<i>Gallinago gallinago</i>	Y	-	0.0	0.0	0.0	0.0	0.0	0.0	0.0	0.0	0.0	0.0	0.0	0.0	0.0	0.0	0.0	0.0	0.0	0.0
Red-necked Stint	<i>Calidris ruficollis</i>	Y	LC	0.0	0.0	0.0	0.0	0.0	0.0	0.0	0.0	0.0	0.0	0.0	0.0	0.0	0.0	0.0	0.0	0.0	0.0
Temminck's Stint	<i>Calidris temminckii</i>	Y	LC	0.0	0.0	0.0	0.0	0.0	0.0	0.0	0.0	0.0	0.0	0.0	0.0	0.0	0.0	0.0	0.0	0.0	0.0
Long-toed Stint	<i>Calidris subminuta</i>	Y	LC	0.0	0.0	0.0	0.0	0.0	0.0	0.0	0.0	0.0	0.0	0.0	0.0	0.0	0.0	0.0	0.0	0.0	0.0
Black-headed Gull	<i>Chroicocephalus ridibundus</i>	Y	PRC	0.0	0.0	0.0	0.0	0.0	0.0	0.0	0.0	0.0	0.0	0.0	0.0	0.0	0.0	0.0	0.0	0.0	0.0
Whiskered Tern	<i>Chlidonias hybrida</i>	Y	-	0.0	0.0	0.0	0.0	0.0	0.0	0.0	0.0	0.0	0.0	0.0	0.0	0.0	0.0	0.0	0.0	0.0	0.0
Domestic Pigeon	<i>Columba livia</i>	N	-	0.0	0.0	0.0	0.0	0.0	0.0	0.0	0.0	0.0	0.0	0.0	0.0	0.0	0.0	0.0	0.0	0.0	0.0
Oriental Turtle Dove	<i>Streptopelia orientalis</i>	N	-	0.0	0.0	0.0	0.0	0.0	0.0	0.0	0.0	0.0	0.0	0.0	0.0	0.0	0.0	0.0	0.0	0.0	0.0
Red Turtle Dove	<i>Streptopelia tranquebarica</i>	N	-	0.0	0.0	0.0	0.0	0.0	0.0	0.0	0.0	0.0	0.0	0.0	0.0	0.0	0.0	0.0	0.0	0.0	0.0
Spotted Dove	<i>Spilopelia chinensis</i>	N	-	2.6	3.8	7.0	4.2	4.4	2.0	1.0	1.4	1.8	2.8	5.3	4.8	2.3	8.0	5.8	6.2	2.0	3.5
Eurasian Collared Dove	<i>Streptopelia decaocto</i>	N	-	0.2	0.6	2.8	0.8	0.2	0.3	0.4	1.0	V	0.4	0.8	2.0	V	0.5	5.8	0.8	0.8	1.5
Asian Koel	<i>Eudynamys scolopaceus</i>	N	-	0.0	0.0	0.0	0.0	0.0	0.0	0.0	0.0	0.0	0.0	0.0	0.0	0.0	0.0	0.0	0.0	0.8	0.8
Greater Coucal#	<i>Centropus sinensis</i>	N	-	0.0	0.6	0.3	0.6	0.8	0.5	0.4	V	0.5	0.4	0.3	0.4	0.0	0.0	0.3	0.2	0.8	1.0
Eurasian Eagle Owl	<i>Bubo bubo</i>	N	RC	0.0	0.0	0.0	0.0	0.0	0.0	0.0	0.0	0.0	0.0	0.0	0.0	0.0	0.0	0.0	0.0	0.0	0.0
Savanna Nightjar	<i>Caprimulgus affinis</i>	N	-	0.0	0.0	0.0	0.0	0.0	0.0	0.0	0.0	0.0	0.0	0.0	0.0	0.0	0.0	0.0	0.0	V	0.0
Pacific Swift	<i>Apus pacificus</i>	N	(LC)	0.0	0.0	0.0	0.0	0.0	0.0	0.0	0.0	0.0	0.0	0.0	0.0	0.0	0.0	0.0	0.0	0.0	0.0

Common name	Scientific name	Wetland Dependence	Conservation status	Nov-16	Dec-16	Jan-17	Feb-17	Mar-17	Apr-17	May-17	Jun-17	Jul-17	Aug-17	Sep-17	Oct-17	Nov-17	Dec-17	Jan-18	Feb-18	Mar-18	Apr-18
House Swift	<i>Apus nipalensis</i>	N	-	0.0	0.0	0.0	0.0	0.0	0.0	0.0	0.0	V	0.0	0.0	0.0	7.8	3.3	0.0	0.0	0.0	0.0
Pied Kingfisher	<i>Ceryle rudis</i>	Y	(LC)	0.2	0.6	0.5	0.0	0.0	0.3	0.0	0.0	0.0	0.0	0.0	0.0	0.0	0.0	0.0	0.0	0.3	0.0
Black-capped Kingfisher	<i>Halcyon pileata</i>	Y	(LC)	0.0	0.0	0.0	0.0	0.0	0.0	0.0	0.0	0.0	0.0	0.0	0.0	0.0	0.0	0.0	0.0	0.0	0.0
White-throated Kingfisher	<i>Halcyon smyrnensis</i>	Y	(LC)	0.2	0.4	0.0	0.4	0.2	0.0	0.2	0.2	0.3	0.0	0.0	0.2	0.3	0.5	0.2	V	0.0	0.0
Common Kingfisher	<i>Alcedo atthis</i>	Y	-	2.2	1.4	1.8	2.6	2.0	0.3	1.0	0.2	0.8	0.4	0.4	1.2	1.0	1.5	0.2	0.2	0.5	1.0
Eurasian Hoopoe	<i>Upupa epops</i>	N	-	0.0	0.0	0.0	0.0	0.0	0.0	0.0	0.0	0.0	0.0	0.0	0.0	0.0	0.0	0.0	0.0	0.0	0.0
Barn Swallow	<i>Hirundo rustica</i>	N	-	0.0	0.0	0.0	1.4	1.2	1.5	1.6	0.0	0.8	V	1.3	0.0	1.0	V	2.3	13.2	4.0	4.5
Red-rumped Swallow	<i>Hirundo daurica</i>	N	-	0.0	0.0	0.0	0.0	0.0	0.0	0.0	0.0	0.0	0.0	0.0	0.0	0.0	0.0	0.0	0.0	0.0	0.0
Eastern Yellow Wagtail	<i>Motacilla tschutschensis</i>	Y	-	0.6	0.4	0.0	0.0	0.4	0.5	0.4	0.0	0.0	0.0	0.0	0.0	0.0	V	V	0.2	1.3	0.0
Grey Wagtail	<i>Motacilla cinerea</i>	Y	-	0.0	0.0	0.0	0.0	0.0	0.0	0.0	0.0	0.0	0.0	0.0	0.0	0.0	0.0	0.0	0.0	0.0	0.0
White Wagtail	<i>Motacilla alba</i>	Y	-	1.6	2.2	0.0	1.0	1.0	1.0	0.6	0.4	V	0.0	1.4	2.0	1.5	3.5	3.2	1.6	1.5	0.3
Richard's Pipit	<i>Anthus richardi</i>	Y	-	0.0	0.0	0.0	0.0	0.0	0.0	0.0	0.0	0.0	0.0	0.0	0.0	0.0	0.3	0.0	0.0	0.0	0.0
Olive-backed Pipit	<i>Anthus hodgsoni</i>	N	-	0.0	0.2	0.3	0.0	0.0	0.0	0.0	0.0	0.0	0.0	0.0	0.2	0.0	0.0	0.0	0.2	0.0	0.8
Red-throated Pipit	<i>Anthus cervinus</i>	N	LC	0.0	0.0	0.0	0.0	0.0	0.0	0.0	0.0	0.0	0.0	0.0	0.0	0.0	0.0	0.0	0.0	0.0	0.0
Buff-bellied Pipit	<i>Anthus rubescens</i>	N	LC	0.0	0.0	0.0	0.0	0.0	0.0	0.0	0.0	0.0	0.0	0.0	0.0	0.0	0.0	0.0	0.0	0.0	0.0
Red-whiskered Bulbul	<i>Pycnonotus jocosus</i>	N	-	1.8	3.2	4.3	1.8	1.8	2.0	1.4	1.2	1.5	0.0	6.0	7.4	V	2.0	2.0	4.4	4.3	6.8
Chinese Bulbul	<i>Pycnonotus sinensis</i>	N	-	0.4	1.4	10.8	4.0	1.6	2.8	2.0	1.2	1.5	1.2	1.8	3.6	V	0.8	2.8	8.2	1.8	2.5
Sooty-headed Bulbul	<i>Pycnonotus aurigaster</i>	N	-	0.0	0.0	0.0	0.0	0.2	0.0	0.0	0.0	0.0	0.0	0.0	0.0	0.0	0.0	0.0	0.0	0.0	0.0

Common name	Scientific name	Wetland Dependence	Conservation status	Nov-16	Dec-16	Jan-17	Feb-17	Mar-17	Apr-17	May-17	Jun-17	Jul-17	Aug-17	Sep-17	Oct-17	Nov-17	Dec-17	Jan-18	Feb-18	Mar-18	Apr-18
Red-flanked Bluetail	<i>Tarsiger cyanurus</i>	N	-	0.0	0.0	0.0	0.0	0.0	0.0	0.0	0.0	0.0	0.0	0.0	0.2	0.0	0.0	0.0	0.0	0.0	0.0
Bull-headed Shrike	<i>Lanius bucephalus</i>	N	-	0.0	0.0	0.0	0.0	0.0	0.0	0.0	0.0	0.0	0.0	0.0	0.0	0.0	0.0	0.0	0.0	0.0	0.0
Brown Shrike	<i>Lanius cristatus</i>	N	-	0.0	0.0	0.0	0.0	0.0	0.3	0.0	0.0	0.0	0.0	0.0	0.0	0.0	0.0	0.0	0.0	0.0	0.0
Long-tailed Shrike	<i>Lanius schach</i>	N	-	0.6	0.2	0.0	0.2	0.4	0.0	0.0	V	0.3	1.2	0.3	2.2	2.0	1.3	0.3	1.8	V	V
Oriental Magpie Robin	<i>Copsychus sauralis</i>	N	-	0.6	0.0	0.0	0.0	0.0	0.8	0.6	0.8	1.3	1.2	0.0	0.0	2.0	V	0.0	0.0	0.5	2.0
Daurian Redstart	<i>Phoenicurus aureus</i>	N	-	0.2	0.4	0.0	0.4	0.2	0.0	0.0	0.0	0.0	0.0	0.0	0.0	2.8	2.0	0.8	0.8	0.5	0.0
Stejneger's Stonechat	<i>Saxicola stejnegeri</i>	N	-	0.2	0.6	0.3	0.4	0.4	0.5	0.0	0.0	0.0	0.0	0.0	0.4	0.3	1.8	0.3	V	V	0.0
Chinese Blackbird	<i>Turdus mandarinus</i>	N	-	0.0	0.0	0.0	0.0	0.0	0.0	0.0	0.0	0.0	0.0	0.0	0.0	0.0	0.0	0.0	0.0	0.0	0.0
Grey-backed thrush	<i>Turdus hortulorum</i>	N	-	0.0	0.0	0.0	0.0	0.0	0.0	0.0	0.0	0.0	0.0	0.0	0.0	0.0	0.0	0.0	0.0	0.0	0.0
Masked Laughingthrush	<i>Garrulax perspicillatus</i>	N	-	0.2	0.6	1.5	0.8	0.0	0.8	1.2	1.0	0.5	0.2	0.0	0.4	2.3	2.0	1.3	1.2	1.5	6.5
Lanceolated Warbler	<i>Locustella lanceolata</i>	Y	-	0.0	0.0	0.0	0.0	0.0	0.0	0.0	0.0	0.0	0.0	0.0	V	0.0	0.0	0.0	0.0	0.0	0.0
Pallas's Grasshopper Warbler	<i>Locustella certhiola</i>	Y	LC	0.0	0.0	0.0	0.0	0.0	0.0	0.0	0.0	0.0	0.0	0.0	0.0	0.0	0.0	0.0	0.0	0.0	0.0
Oriental Reed Warbler	<i>Acrocephalus orientalis</i>	Y	-	0.0	0.0	0.0	0.0	0.0	0.0	0.0	0.0	0.0	0.0	0.0	0.0	0.0	0.0	0.0	0.0	0.0	0.0
Thick-billed Warbler	<i>Acrocephalus aeson</i>	Y	LC	0.0	0.0	0.0	0.0	0.0	0.0	0.0	0.0	0.0	0.0	0.0	0.0	0.0	0.0	0.0	0.0	0.0	0.0
Black-browed Reed Warbler	<i>Acrocephalus bistrigiceps</i>	Y	-	0.0	0.0	0.0	0.0	0.0	0.0	0.0	0.0	0.0	0.0	0.0	V	0.0	0.0	0.0	0.0	0.0	0.0
Common Tailorbird	<i>Orthotomus sutorius</i>	N	-	0.0	0.0	0.3	0.2	0.6	0.5	0.0	V	V	V	0.0	1.4	1.8	0.0	1.8	0.8	V	6.3
Dusky Warbler	<i>Phylloscopus fuscatus</i>	N	-	0.0	0.0	0.0	0.0	0.0	0.0	0.0	0.0	0.0	0.0	0.0	0.0	0.5	0.0	V	V	V	V

Common name	Scientific name	Wetland Dependence	Conservation status	Nov-16	Dec-16	Jan-17	Feb-17	Mar-17	Apr-17	May-17	Jun-17	Jul-17	Aug-17	Sep-17	Oct-17	Nov-17	Dec-17	Jan-18	Feb-18	Mar-18	Apr-18
Pallas's Leaf Warbler	<i>Phylloscopus proregulus</i>	N	-	0.0	0.0	0.0	0.4	0.0	0.0	0.0	0.0	0.0	0.0	0.0	0.0	0.0	0.0	0.0	0.0	0.0	0.0
Yellow-browed warbler	<i>Phylloscopus inornatus</i>	N	-	0.6	0.0	0.3	0.0	0.0	0.0	0.0	0.0	0.0	0.0	0.0	0.0	0.0	0.0	0.0	0.4	0.0	0.0
Bluethroat	<i>Luscinia svecica</i>	N	LC	0.0	0.0	0.0	0.0	0.0	0.0	0.0	0.0	0.0	0.0	0.0	0.0	0.0	0.0	0.0	0.0	V	0.0
Zitting Cisticola	<i>Cisticola juncidis</i>	Y	LC	0.0	0.0	0.0	0.0	0.0	0.0	0.0	0.0	0.0	0.0	0.0	0.0	0.0	0.0	0.0	0.0	0.0	0.0
Yellow-bellied Prinia	<i>Prinia flaviventris</i>	N	-	0.0	0.0	0.0	1.4	1.0	1.0	1.8	V	0.0	0.0	0.0	0.2	0.3	0.0	0.5	0.0	V	0.5
Plain Prinia	<i>Prinia inornata</i>	N	-	0.4	0.2	1.0	0.8	0.2	0.5	0.6	0.8	0.3	0.2	V	0.0	0.8	0.3	1.0	0.6	0.8	0.0
Asian Brown Flycatcher	<i>Muscicapa dauurica</i>	N	-	0.0	0.0	0.0	0.0	0.0	0.0	0.0	0.0	0.0	0.0	0.0	0.0	0.0	0.0	0.0	0.0	0.0	0.0
Chinese Penduline-Tit	<i>Remiz consobrinus</i>	Y	RC	0.0	0.0	0.0	0.0	0.0	0.0	0.0	0.0	0.0	0.0	0.0	0.0	0.0	0.0	0.0	0.0	0.0	0.0
Cinereous Tit	<i>Parus cinereus</i>	N	-	0.0	0.0	0.0	0.0	0.4	0.0	0.0	V	0.0	0.0	0.0	0.0	0.0	0.0	0.0	0.0	0.0	0.0
Japanese White-eye	<i>Zosterops japonica</i>	N	-	0.0	1.6	0.0	0.0	0.4	0.0	0.2	0.4	V	0.0	0.0	0.2	0.0	0.0	0.0	0.0	V	0.0
Little Bunting	<i>Emberiza pusilla</i>	N	-	0.0	0.0	0.0	0.0	0.0	0.0	0.0	0.0	0.0	0.0	0.0	0.0	0.0	0.0	0.0	0.0	0.0	0.0
Black-faced Bunting	<i>Emberiza spodocephala</i>	N	-	0.0	0.0	0.0	0.0	0.0	0.0	0.0	0.0	0.0	0.0	0.0	0.0	0.0	0.0	0.0	0.0	0.0	0.0
Chinese Grosbeak	<i>Eophona migratoria</i>	Y	LC	0.0	0.0	0.0	0.0	0.0	0.0	0.0	0.0	0.0	0.0	0.0	0.0	0.0	0.0	0.0	0.0	0.0	0.0
Scaly-breasted Munia	<i>Lonchura punctulata</i>	N	-	0.8	0.0	0.0	0.0	0.0	2.8	0.0	V	1.5	0.0	4.5	1.2	0.0	4.0	3.3	V	V	2.8
Eurasian Tree Sparrow	<i>Passer montanus</i>	N	-	0.2	0.0	0.0	0.0	0.0	0.0	0.0	0.0	0.0	0.6	2.0	1.4	V	1.0	3.3	0.2	0.0	1.8
Red-billed Starling	<i>Spodiopsar sericeus</i>	Y	(RC)*	0.0	0.0	0.5	0.0	0.0	0.0	0.0	0.0	V	0.0	0.0	0.0	5.0	0.8	8.4	V	V	0.0
White-cheeked Starling	<i>Spodiopsar cineraceus</i>	Y	PRC	0.0	0.0	0.0	0.6	0.0	0.0	V	0.0	0.0	0.0	0.0	0.0	0.0	0.0	0.0	0.0	0.0	0.0

Common name	Scientific name	Wetland Dependence	Conservation status	Nov-16	Dec-16	Jan-17	Feb-17	Mar-17	Apr-17	May-17	Jun-17	Jul-17	Aug-17	Sep-17	Oct-17	Nov-17	Dec-17	Jan-18	Feb-18	Mar-18	Apr-18
Black-collared Starling	<i>Gracupica nigricollis</i>	N	-	0.2	0.2	0.3	0.6	0.4	0.5	0.4	0.4	1.0	1.4	1.0	2.2	0.8	2.5	3.0	1.2	0.8	0.3
White-shouldered Starling	<i>Sturnia sinensis</i>	Y	(LC)	0.0	0.0	0.0	0.0	0.0	0.0	1.2	1.8	0.0	0.0	0.0	0.0	0.0	0.0	0.0	0.0	0.0	V
Common Myna	<i>Acridotheres tristis</i>	N	-	0.0	0.0	0.0	0.0	0.0	0.0	0.0	0.0	0.0	0.0	0.0	0.0	0.0	0.0	0.0	0.0	0.0	0.0
Common Redshank	<i>Tringa totanus</i>	Y	RC	0.0	0.0	0.0	0.0	0.0	0.0	0.0	0.0	0.0	0.0	0.0	0.0	0.0	0.0	0.0	0.0	0.0	0.0
Crested Myna	<i>Acridotheres cristatellus</i>	N	-	6.2	1.8	5.8	0.4	0.6	1.5	0.2	2.6	V	2.0	4.0	3.2	9.8	1.5	4.3	2.4	3.0	2.3
Black-naped Oriole	<i>Oriolus chinensis</i>	Y	LC	0.0	0.0	0.0	0.0	0.0	0.0	0.0	0.0	0.0	0.0	0.0	0.0	0.0	0.0	0.0	0.0	0.0	0.0
Black Drongo	<i>Dicrurus macrocercus</i>	N	-	0.2	0.0	0.0	0.0	0.0	0.0	0.0	0.0	0.0	0.0	0.3	0.0	0.0	0.3	1.0	V	0.3	0.0
Azure-winged Magpie	<i>Cyanopica cyanus</i>	N	-	0.0	0.0	0.5	0.0	0.0	0.0	0.0	0.0	0.0	0.0	0.0	0.2	0.0	0.0	1.0	0.4	0.0	0.0
Eurasian Magpie	<i>Pica pica</i>	N	-	0.0	0.2	0.0	0.4	0.2	0.0	0.2	0.0	0.0	0.0	0.0	1.4	0.8	0.5	1.0	V	0.5	0.3
Large-billed Crow	<i>Corvus macrorhynchos</i>	N	-	0.0	0.0	0.0	0.0	0.2	0.0	0.0	V	0.0	0.0	0.0	0.0	0.0	V	0.0	V	0.5	0.0
Collared Crow	<i>Corvus torquatus</i>	Y	LC, NT	0.0	0.0	0.0	0.0	0.0	0.0	0.0	0.0	0.0	0.0	0.0	0.4	0.0	V	0.0	1.2	0.3	V

Note: Conservation Status follows that of Fellows et. al. (2002) Letters in parentheses indicate that the assessment is on the basis of restrictedness in breeding and/or roosting sites rather than in general occurrence. (Fellows et al. 2002)

^ Pintail Snip and Swinhoe's Snipe cannot be distinguished in field, conservation status refers to Swinhoe's Snipe.

V Indicates the species is recorded outside regular surveys.

DS Indicates species recorded during survey.

# Greater Coucal is listed as vulnerable (VU) in China Red Data Book and it is protected terrestrial wildlife state protection (category II).

\* Red-billed Starling is considered by Fellows et al (2002) to be of Global Concern. Since publication, however, the global population estimate has been revised and the species is not now considered globally threatened. A listing of Regional Concern (RC) based on the importance of the large roosts present near Deep Bay, is considered to be more appropriate. (Wetland Restoration Plan, Mott, 2008). Red-billed Starling is now listed as Least Concern by IUCN. (IUCN, 2016)



# Appendix C. Summary of Herpetofauna Monitoring, Mammals and Insect Surveys

**Table C1: Summary of herpetofauna monitoring within the Survey Area (excluding the WRA)**

Common Name	Scientific Name	Conservation Status(1)	Mean(2)					
Amphibians			Nov 2017	Dec 2017	Jan 2018	Feb 2018	Mar 2018	Apr 2018
(No amphibian was recorded during the survey period)								
No. of Species Recorded			0	-	-	-	0	0
Reptiles			Nov 2017	Dec 2017	Jan 2018	Feb 2018	Mar 2018	Apr 2018
(No reptile was recorded during the survey period)								
No. of Species Recorded			0	-	-	-	0	0

- (1) Conservation status follows that of Fellows that of Fellowes et al. (2002), Chan et al. (2005) and Karsen et al. (1998).  
 (2) Refers to the mean number of individuals recorded in the reporting period (excluding the WRA)  
 V Indicates the species is recorded outside regular surveys.

**Table C2: Summary of herpetofauna monitoring in the WRA**

Common Name	Scientific Name	Conservation Status	Mean(2)					
Amphibians			Nov 2017	Dec 2017	Jan 2018	Feb 2018	Mar 2018	Apr 2018
Brown Tree Frog	<i>Polypedates megacephalus</i>	-	-				-	2.0
No. of Species Recorded			0	-	-	-	0	1
Reptiles			Nov 2017	Dec 2017	Jan 2018	Feb 2018	Mar 2018	Apr 2018
Checkered Keelback	<i>Xenochrophis flavipunctatus</i>	-	1.0				-	-
Snake	<i>Indet. sp.1</i>	-	1.0				-	-
No. of Species Recorded			2	-	-	-	0	0

(1) Conservation status follows that of Fellows that of Fellowes et al. (2002), Chan et al. (2005) and Karsen et al. (1998).

(2) Refers to the mean number of individuals recorded in the reporting period at WRA.

V Indicates the species is recorded outside regular surveys.

**Table C3: Summary of mammal monitoring in the Survey Area (excluding the WRA)**

Common Name	Scientific Name	Conservation Status (1)	Max (2)					
Mammal			Nov 2017	Dec 2017	Jan 2018	Feb 2018	Mar 2018	Apr 2018
(No mammal was record during the survey period)								

(1) Conservation status follows that of Fellows et al. (2002) and Shek (2006).

(2) Refers to the maximum number of individuals recorded in each month in the survey area (excluding WRA).

V Indicates the species is recorded outside regular surveys.



**Table C4: Summary of mammal monitoring in the WRA**

Common Name	Scientific Name	Conservation Status (1)	Max (2)					
Mammal			Nov 2017	Dec 2017	Jan 2018	Feb 2018	Mar 2018	Apr 2018
Bat	<i>indet. sp. 1</i>	-	V	-	V	V	-	-
Bat	<i>indet. sp. 2</i>	-	V	-	V	V	-	-
Leopard Cat	<i>Prionailurus bengalensis</i>	-	-	-	-	-	V	V
No. of Species Recorded			2	0	2	2	1	1

(1) Conservation status follows that of Fellows et al. (2002) and Shek (2006).

(2) Refers to the maximum number of individuals recorded in each month at WRA.

V Indicates the species is recorded outside regular surveys.

(3) #Leopard Cat is listed on CITES Appendix II and vulnerable (VU) in China Red Data Book and it is protected under the Wild Animals Protection Ordinance (Cap. 170)

**Table C5: Summary of dragonfly and butterfly monitoring in the Survey Area (excluding the WRA)**

Common Name	Scientific Name	Conservation Status(1)	Mean(2)					
Odonate			Nov 2017	Dec 2017	Jan 2018	Feb 2018	Mar 2018	Apr 2018
Red-faced Skimmer	<i>Orthetrum chrysis</i>	-	-				-	0.5
Variegated Flutterer	<i>Rhyothemis variegata arria</i>	-	-				-	4.0
No. of Species Recorded			0	-	-	-	-	2
Butterfly			Nov 2017	Dec 2017	Jan 2018	Feb 2018	Mar 2018	Apr 2018
Indian Cabbage White	<i>Pieris canidia canidia</i>	-	-				2.0	14.5
Lemon Emigrant	<i>Catopsilia pomona pomona</i>	-	-				-	3.0
No. of Species Recorded			0	-	-	-	1	2

(1) Conservation status follows that of Fellows et al. (2002) and Shek (2006), Lo & Hui (2004), Wilson (2004) and Young & Yiu (2002).

(2) Refers to the mean number of individuals recorded in each month in the survey area (excluding the WRA)

**Table C6: Summary of dragonfly and butterfly monitoring in the WRA**

Common Name	Scientific Name	Conservation Status(1)	Mean (2)					
Odonate			Nov 2017	Dec 2017	Jan 2018	Feb 2018	Mar 2018	Apr 2018
Asian Amberwing	<i>Brachythemis contaminata</i>	-	-				-	0.5
Common Bluetail	<i>Ischnura senegalensis</i>	-	1.0					
Common Flangetail	<i>Ictionogomphus pertinax</i>	-					3.0	1.5
Orange-tailed Sprite	<i>Ceragrion auranticum ryukyuanum</i>	-	-				-	1.0
Variegated Flutterer	<i>Rhyothemis variegata arria</i>	-	-				-	1.0
Wandering Midget	<i>Agriocnemis pygmaea</i>	-	-				1.0	
No. of Species Recorded			1	-	-	-	2	4
Butterfly			Nov 2017	Dec 2017	Jan 2018	Feb 2018	Mar 2018	Apr 2018
Great Egg-fly	<i>Hypolimnas bolina kezia</i>	-	3.0				-	
Indian Cabbage White	<i>Pieris canidia canidia</i>	-	-				-	0.5
Paris Peacock	<i>Papilio paris paris</i>	-						0.5
Lemon Emigrant	<i>Catopsilia pomona pomona</i>	-	-				2.0	1.0
No. of Species Recorded			1	-	-	-	1	3

(1) Conservation status follows that of Fellowes et al. (2002), Lo & Hui (2004), Wilson (2004) and Young & Yiu (2002).

(2) Refers to the mean number of individuals recorded in each month in the survey area at WRA

## Appendix D. Summary of Water Quality Monitoring

**Table D1. Water quality at WRA**

**November 2017**

Cell No.	Temp. (°C)	pH	Additional pH monitoring	Salinity (ppt)	Turb. (NTU)	DO (mg/L)	Water Level (cm)
1	22.3	8.11	8.09	0.14	10.9	5.7	170
2	22.5	8.08	8.07	0.15	12.1	6.3	160
3	22.6	8.01	8.00	0.15	12.4	6.0	160
4	22.5	7.94	7.88	0.15	10.3	5.8.	150

**December 2017**

Cell No.	Temp. (°C)	pH	Additional pH monitoring	Salinity (ppt)	Turb. (NTU)	DO (mg/L)	Water Level (cm)
1	18.4	7.89	7.98	0.18	21.9	6.0	160
2	18.6	7.86	7.95	0.19	23.1	6.6	140
3	18.7	7.79	7.88	0.19	23.4	6.3	160
4	18.6	7.72	7.81	0.19	21.3	6.1	160

**January 2018**

Cell No.	Temp. (°C)	pH	Salinity (ppt)	Turb. (NTU)	DO (mg/L)	Water Level (cm)	Additional Water Level Monitoring
1	13.8	7.72	0.21	9.6	8.7	160	160
2	13.3	7.44	0.22	10.6	10.4	130	130
3	14.8	7.61	0.21	4.9	9.3	150	150
4	16.0	7.49	0.20	4.2	7.1	150	150

**February 2018**

Cell No.	Temp. (°C)	pH	Salinity (ppt)	Turb. (NTU)	DO (mg/L)	Water Level (cm)	Additional Water Level Monitoring (cm)
1	16.8	7.63	0.20	8.7	8.5	140	140
2	16.7	7.49	0.23	6.4	8.6	130	120
3	17.2	7.58	0.22	8.1	8.8	150	150
4	17.0	7.70	0.22	5.9	8.0	140	140

**March 2018**

Cell No.	Temp. (°C)	pH	Salinity (ppt)	Turb. (NTU)	DO (mg/L)	Water Level (cm)	Additional Water Level Monitoring
1	20.1	7.81	0.25	7.0	9.1	130	130
2	19.5	7.90	0.29	18.9	9.5	100	110
3	21.0	7.98	0.25	7.0	9.2	130	130
4	22.7	7.88	0.22	5.2	7.4	130	130

**April 2018**

Cell No.	Temp. (°C)	pH	Salinity (ppt)	Turb. (NTU)	DO (mg/L)	Water Level (cm)	Additional Water Level (cm)
<b>1</b>	29.3	7.71	0.19	7.9	8.3	<b>130</b>	<b>120</b>
<b>2</b>	29.7	7.59	0.22	5.9	8.5	<b>100</b>	<b>100</b>
<b>3</b>	29.5	7.62	0.21	6.7	8.6	<b>130</b>	<b>130</b>
<b>4</b>	30.0	7.68	0.21	6.0	8.1	<b>130</b>	<b>130</b>

Action / Limit Level	Temp. (°C)	pH	Salinity (ppt)	Turb. (NTU)	DO (mg/L)	Water Level (cm)
Action Level	-	<6.5 or >8.0	>2	-	<2	<150 or >250
Limit Level	-	<6.0 or >8.5	>5	-	<1	-

Notes: Values highlighted in **bold** indicate that action level is reached; whereas values in **bold and underline** indicate that limit level is reached  
 # Additional pH and/ or water level monitoring was conducted

**Table D2. In situ water quality at WRA****March 2018**

<b>Cell No.</b>	<b>Ammonia (mg/L)</b>	<b>Total oxidized nitrogen (mg/L)</b>	<b>Total P (mg/L)</b>	<b>Reactive P (mg/L)</b>	<b>BOD (mg/L)</b>
<b>1</b>	0.05	0.04	0.04	<0.01	<2
<b>2</b>	0.04	0.02	0.05	<0.01	<2
<b>3</b>	0.04	0.03	0.03	<0.01	<2
<b>4</b>	0.06	0.02	0.03	<0.01	<2
Action Level	>3	>5	>5	-	-
Limit Level	>6	>10	>10	-	-

Note: Values highlighted in **bold** indicate that action level is reached; whereas values in **bold and underline** indicate that limit level is reached.  
The additional in situ water quality monitoring was carried out on 17 March 2018.